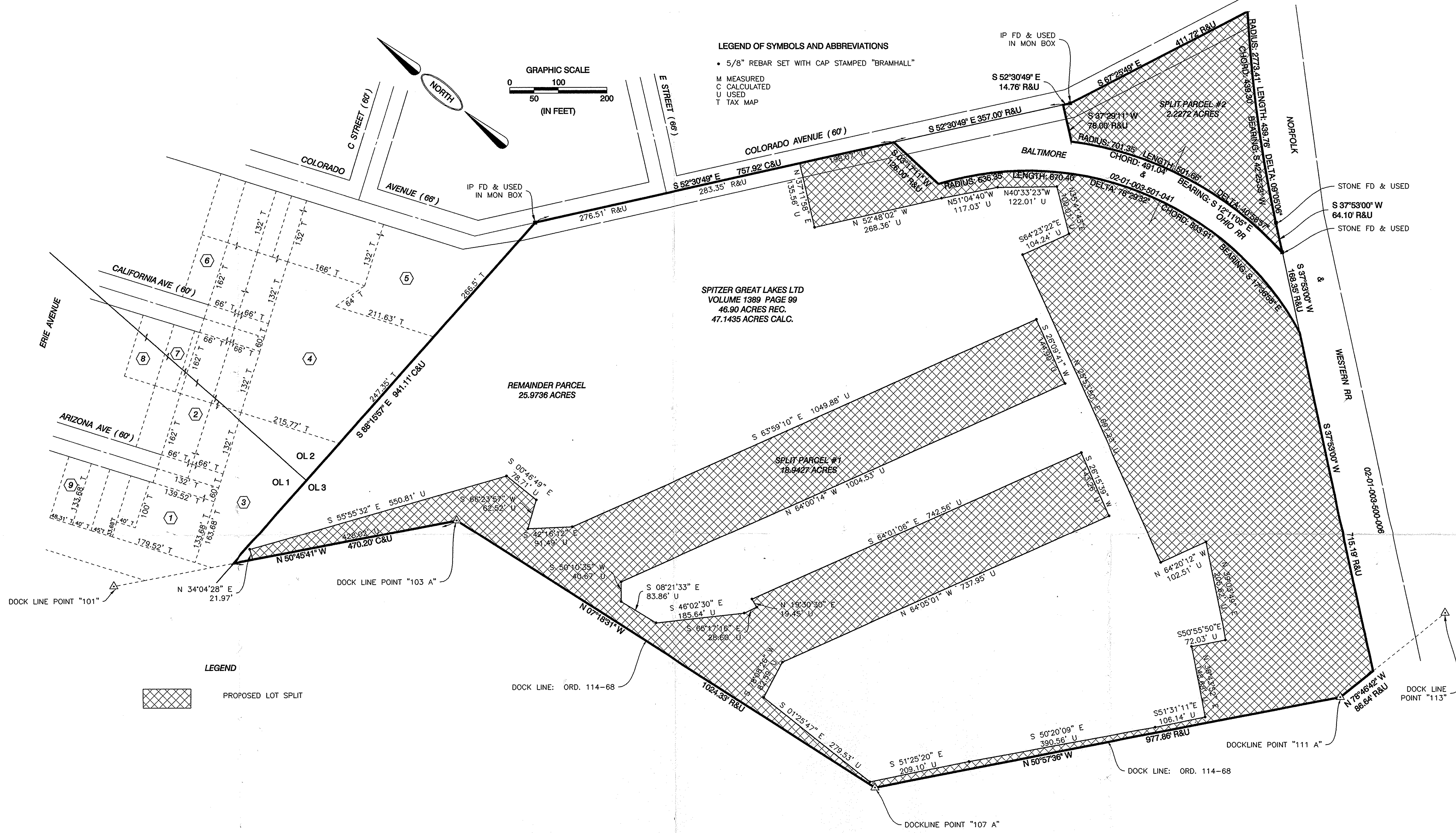


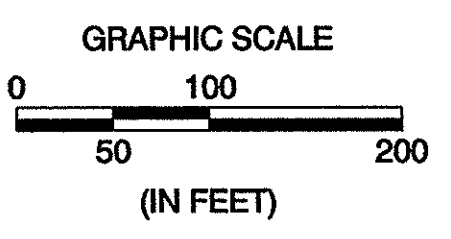
**PARCEL SUMMARY**

- ① SPITZER GREAT LAKES LTD  
PPN 02-01-001-108-016  
VOLUME 1389 PAGE 99  
0.46 ACRES RECORDED
- ② SPITZER GREAT LAKES LTD  
PPN 02-01-001-109-022  
VOLUME 1389 PAGE 99  
0.98 ACRES RECORDED
- ③ SPITZER GREAT LAKES LTD  
PPN 02-01-001-109-012  
VOLUME 1389 PAGE 99  
1.16 ACRES RECORDED
- ④ SPITZER GREAT LAKES LTD  
PPN 02-01-002-105-038  
VOLUME 1389 PAGE 99  
1.82 ACRES RECORDED
- ⑤ SPITZER GREAT LAKES LTD  
PPN 02-01-002-105-037  
VOLUME 1389 PAGE 99  
2.38 ACRES RECORDED
- ⑥ SPITZER GREAT LAKES LTD  
PPN 02-01-002-105-008  
DOCUMENT NO. 98-0516068  
0.20 ACRES RECORDED
- ⑦ SPITZER GREAT LAKES CO  
PPN 02-01-001-109-015  
DOCUMENT NO. 98-0527785  
0.17 ACRES RECORDED
- ⑧ SPITZER GREAT LAKES  
PPN 02-01-001-109-014  
DOCUMENT NO. 98-0526919  
0.20 ACRES RECORDED
- ⑨ SPITZER MANAGEMENT INC  
PPN 02-01-001-108-012  
OR VOLUME 78 PAGE 720  
0.10 ACRES RECORDED



**LEGEND OF SYMBOLS AND ABBREVIATIONS**

- 5/8" REBAR SET WITH CAP STAMPED "BRAMHALL"
- M MEASURED
- C CALCULATED
- U USED
- T TAX MAP



**LEGEND**

PROPOSED LOT SPLIT

# SPITZER RIVERSIDE MARINA DEVELOPMENT BOUNDARY SURVEY

SPITZER GREAT LAKES LTD., CO.  
OCTOBER, 1999

Δ2-Δ1-ΔΔ1-ΔΔ8-Δ16,-Δ12  
-Δ19-Δ22,-Δ12,-Δ15,-Δ14  
-ΔΔ2-ΔΔ5-ΔΔ8,-Δ37,-Δ38

