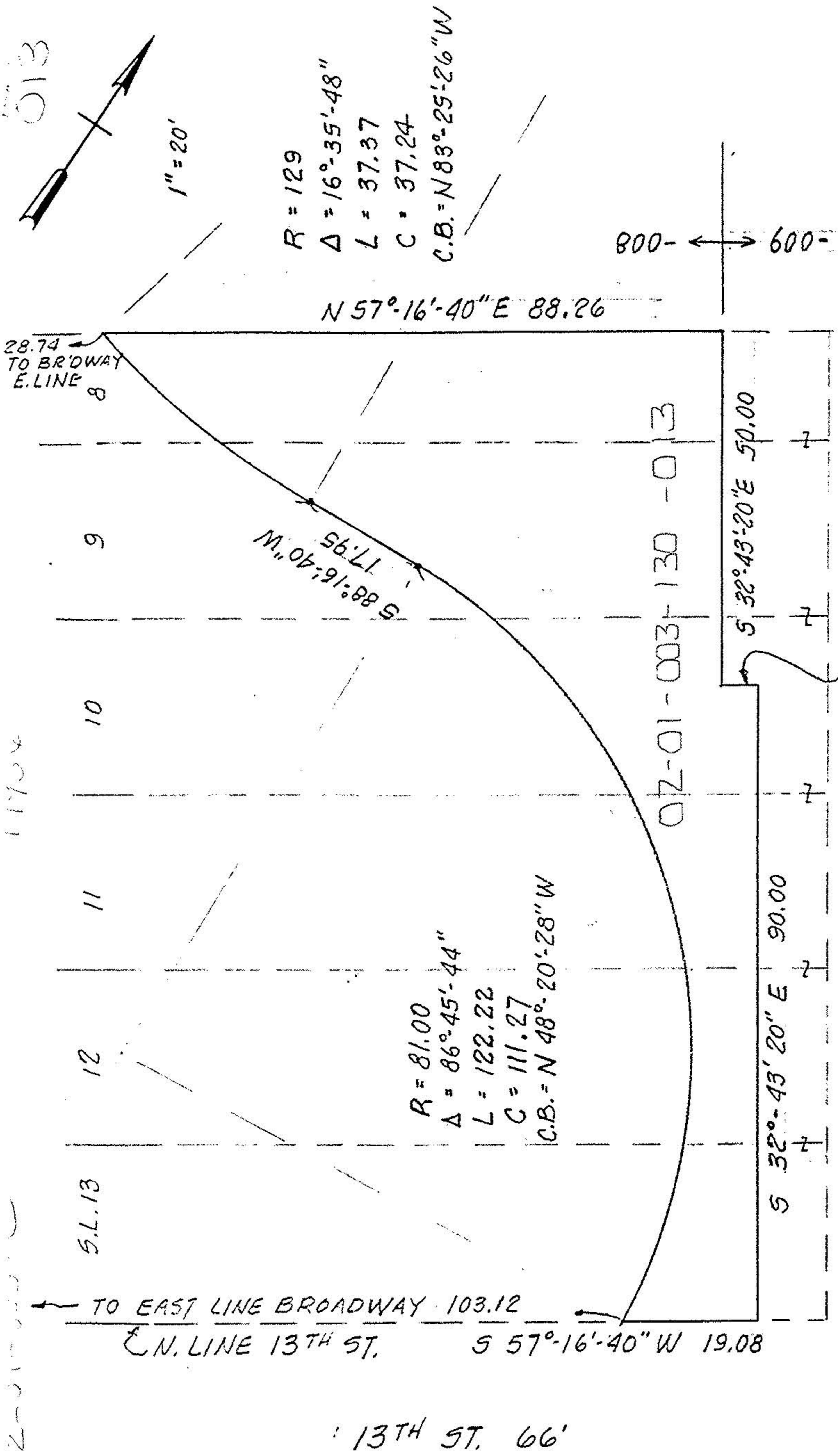


013

11704

2-01-003-C



13TH ST. 66'

PART of  
 SUBLOTS "8 thru 13 in BLOCK 22 of  
 SELAH CHAMBERLAIN TRUSTEES SUBDIVISION  
 PLAT VOL. 2 PAGE 11  
 PART of ORIG. BLACK RIVER TWP. LOT 3-TRACT 1  
 NOW in CITY of LORAIN , OHIO  
 PART of P.P. No. 02-01-003-130-008  
 TAX MAP PAGE 02-01-003-C

PREPARED FROM DESCRIPTION  
 FURNISHED & HIGHWAY PLAN  
 THIS IS NOT A PLAT OF SURVEY:  
 FOR: ATTORNEY DAN COOK

K. E. MCCARTNEY & ASSOCIATES  
 APR. 27, 1988 #881988  
 CB-MISC.