

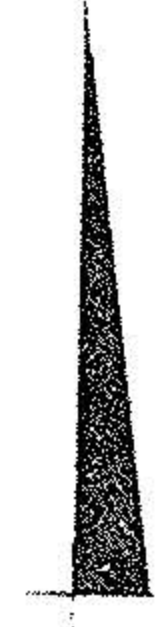
1-00-045  
-052

P.P.N

01-00-045-000-009,010  
01-00-052-000-015,016

MAP OF LANDS IN ORIGINAL LOTS  
NO. 49 AND 52, BROWNHELM TOWNSHIP,  
LORAIN COUNTY, OHIO.  
MADE AT REQUEST OF RAYMOND AUFENKAMPE  
PREPARED BY CHARLES P. WARYU, REG. SURVEYOR  
NO. 9529

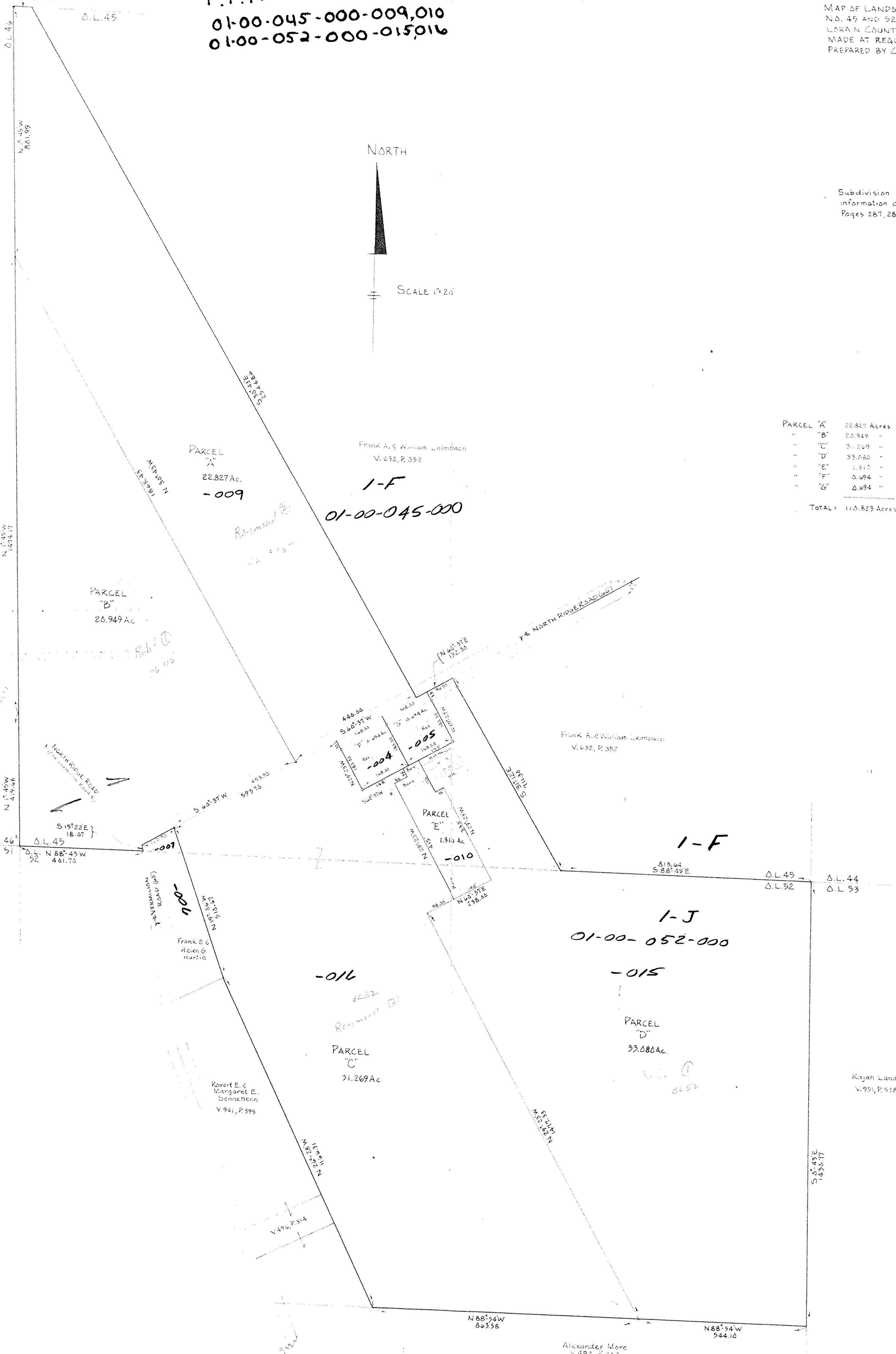
NORTH



SCALE 1"=20'

Subdivision of lands based upon  
information contained in Deed Volume 966,  
Pages 287, 288, Lorain County Record of Deeds

PARCEL "A"	22.827 Acres
"B"	20.949 "
"C"	31.269 "
"D"	33.080 "
"E"	1.310 "
"F"	0.694 "
"G"	0.694 "
TOTAL	110.823 Acres



1-00-045  
-052

052  
1-00-045