

SCALE: 1"=100'

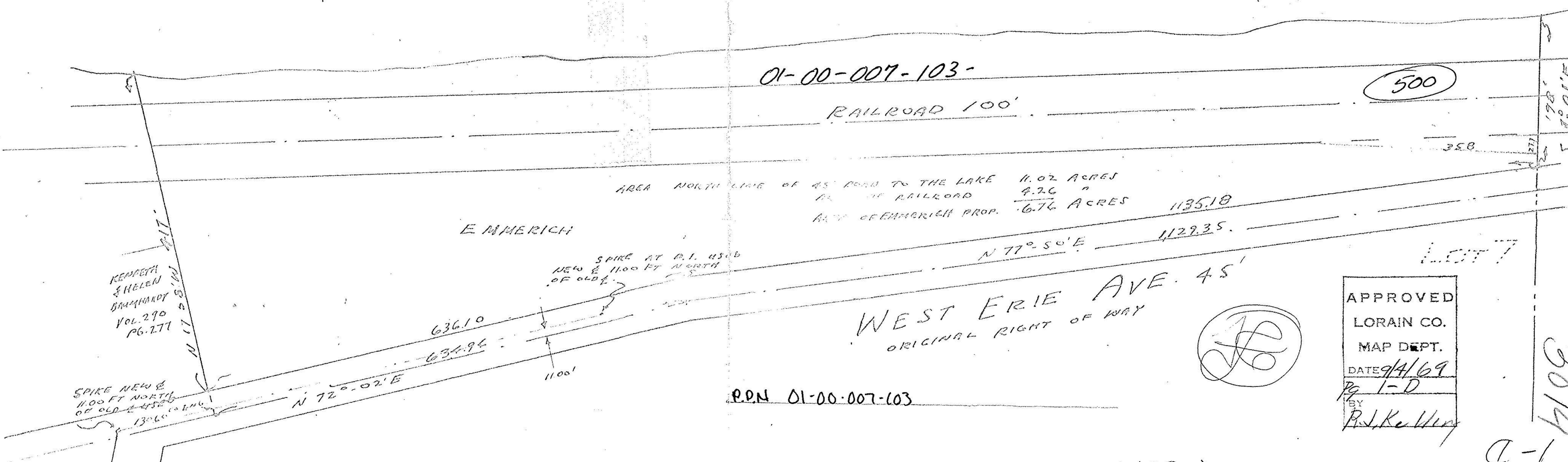
AUGUST 1969

Vincent C. McGervey
CIVIL ENGINEER

LAKE ERIE
1-D
01-00-007-103

01-00-007-103

3014



KENNETH & HELEN BRAMHARDY VOL. 290 PG. 277

01-00-007-103-

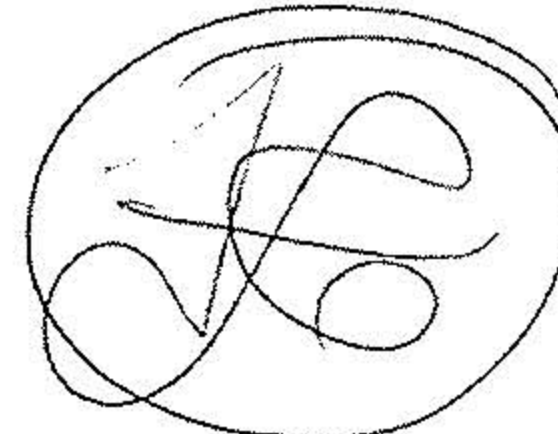
500

AREA NORTH LINE OF 45' ROAD TO THE LAKE 11.02 ACRES
AREA OF RAILROAD 4.26 "
AREA OF EMMERICH PROP. 6.76 ACRES

WEST ERIE AVE. 45'
ORIGINAL RIGHT OF WAY

P.P.N. 01-00-007-103

APPROVED
LORAIN CO.
MAP DEPT.
DATE 9/4/69
Pg 1-D
BY R.J. Keenan



3014

3014
1-D