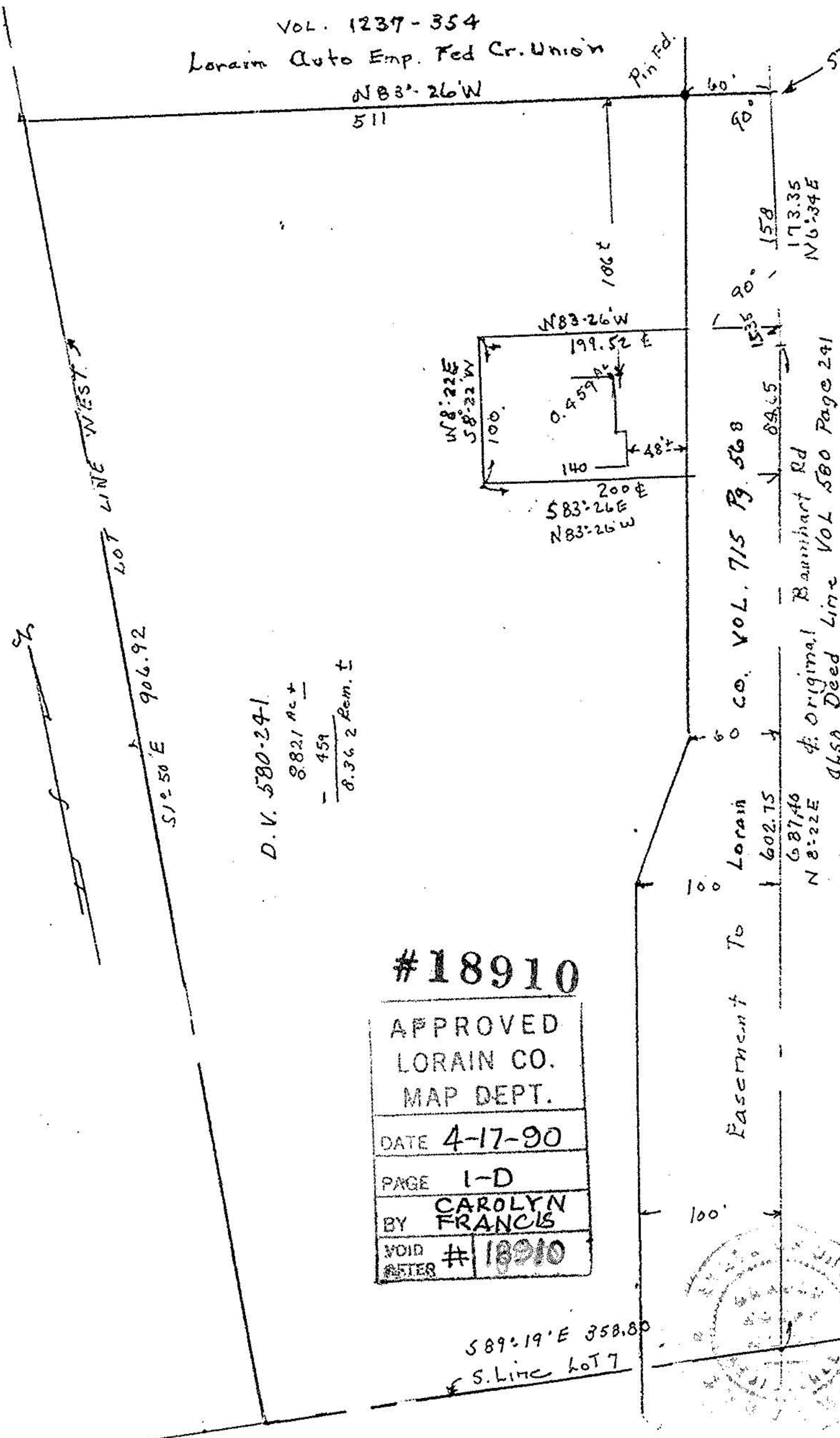


Map of Part of O.L. 7 Brownhelm Twp. City of Lorain, Co. of Lorain
 Scale 1" 100' May 28, 1988
 By Arnold F. Koeppe Reg. Surveyor No. 4306

VOL. 1237-354
 Lorain Auto Emp. Fed Cr. Union
 NB3°-26'W
 511

Pin Fd.

ST 272+16.35

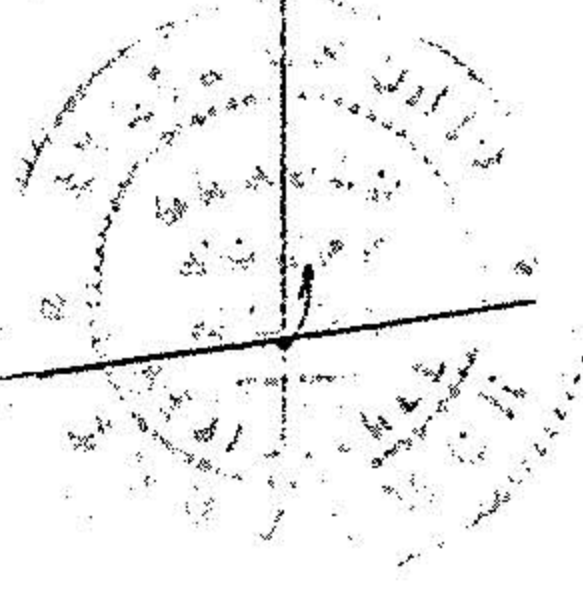


D.V. 580-241
 8.821 Ac ±
 - 459
 8.362 Rem. ±

#18910

APPROVED
 LORAIN CO.
 MAP DEPT.
 DATE 4-17-90
 PAGE 1-D
 BY CAROLYN
 FRANCIS
 VOID AFTER #18910

Easement To Lorain
 602.75
 68746
 N 8°22'E
 60 CO. VOL. 715 Pg. 568
 Original Baumhart Rd
 also Deed Line VOL 580 Page 241



S 89°19'E 358.80
 S. Line lot 7

0.4.7