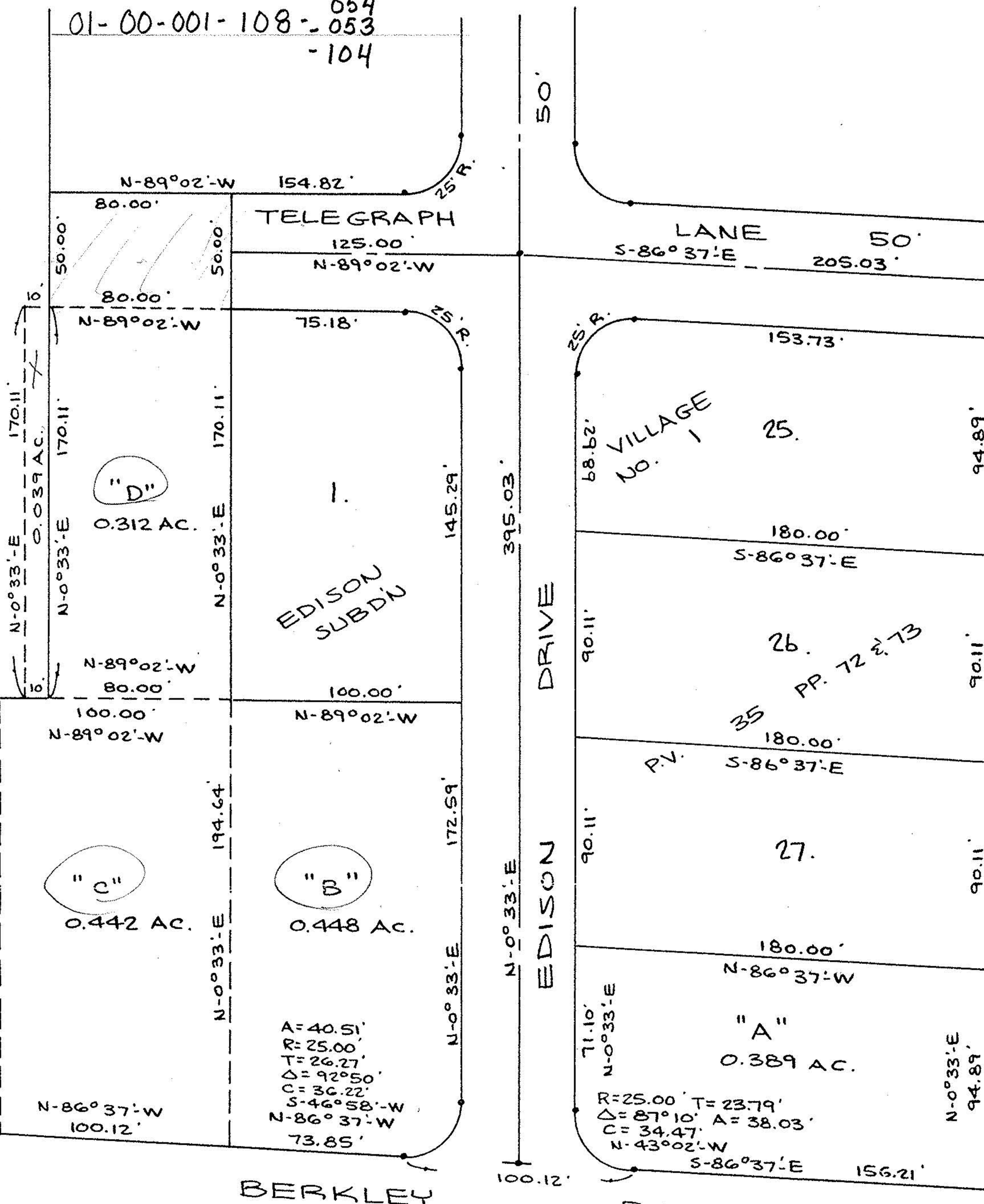


15374

01-00-001-108-054  
-053  
-104

HEALTH CARE AND RETIREMENT CORP. OF AMERICA  
D.V. 1322 P. 49 5.142 AC.



EDISON VILLAGE INC. D.V. 1224 P. 757

NORTH

#15374

APPROVED  
LORAIN CO.  
MAP DEPT.

DATE 11-28-83

PAGE 1-00-001-B

BY T. McMain

VOID  
IF  
ALTERED

PARCEL MAP

PART OF BROWNHELM TWP. ORIG. LOT 1  
CITY OF VERMILION COUNTY OF LORAIN  
STATE OF OHIO

SCALE: 1" = 50'

OCT. 7, 1983

PREPARED BY

KLEINOEDER-SCHMIDT & ASSOC.  
CONSULTING ENGINEERS & SURVEYORS

*Robert E. Schneider*

