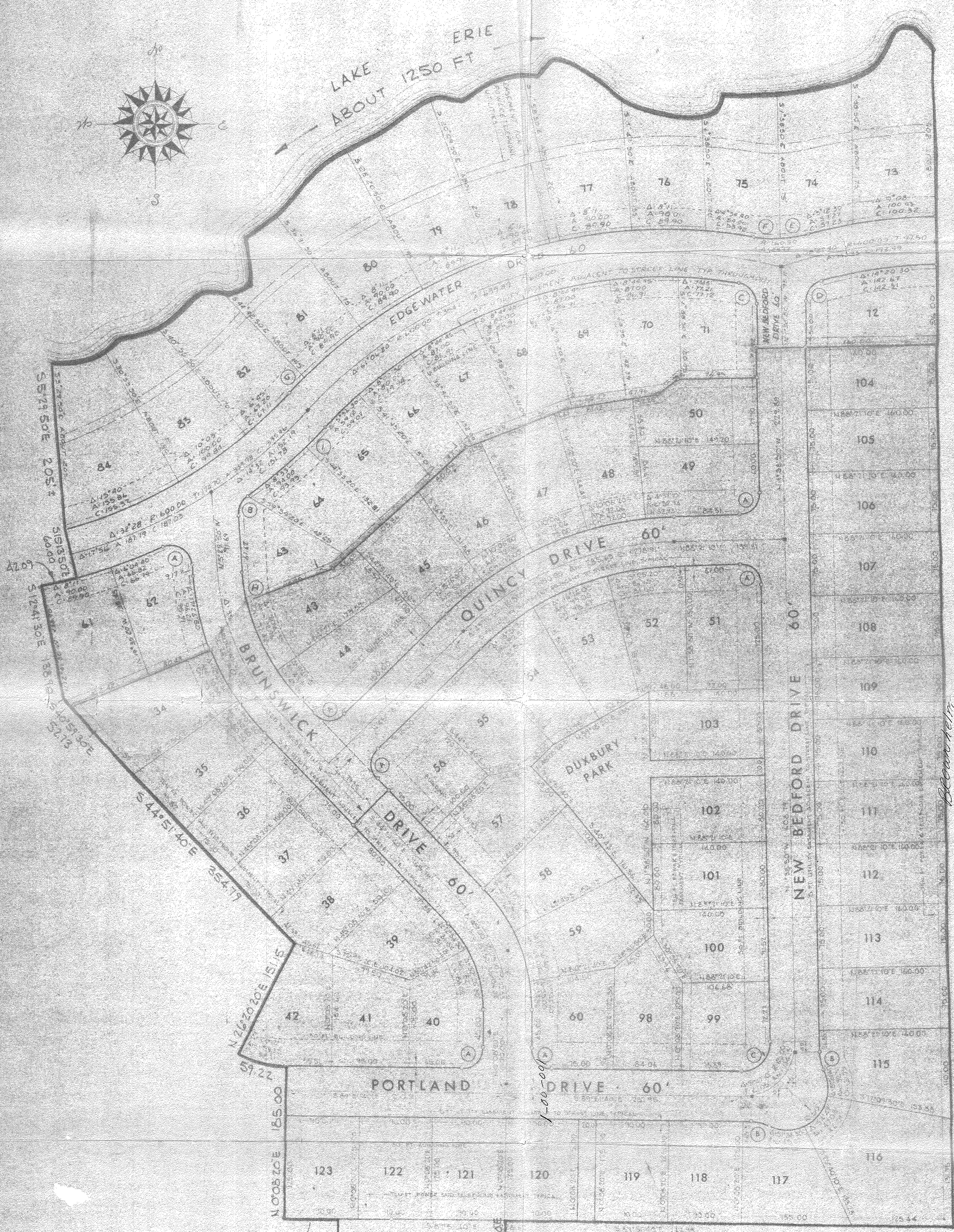


LAKE ERIE
ABOUT 1250 FT



$S 89^{\circ} 51' 40'' E$ 65.82
 $N 0^{\circ} 08' 20'' E$ 120.00
 $S 89^{\circ} 51' 40'' E$ 150.00
 $N 0^{\circ} 08' 20'' E$ 40.00
 $S 89^{\circ} 51' 40'' E$ 174.01
 $N 0^{\circ} 08' 20'' E$ 10.00
 $S 89^{\circ} 51' 40'' E$ 229.01
 $S 89^{\circ} 51' 40'' E$ 549.62

BRIDGEPORT PARK

MAP OF REQUESTED
 VACATION OF 30.7768
 ACRES IN THE CRYSTAL
 SHORES SUBDIVISIONS
 JULY 1970 SCALE 1"=60'

OL 1
 N 1° 28' 50" W ABOUT 1427.75'
 ELBERTA BEACH ALLOTMENT

01-00-001-

100-00-1