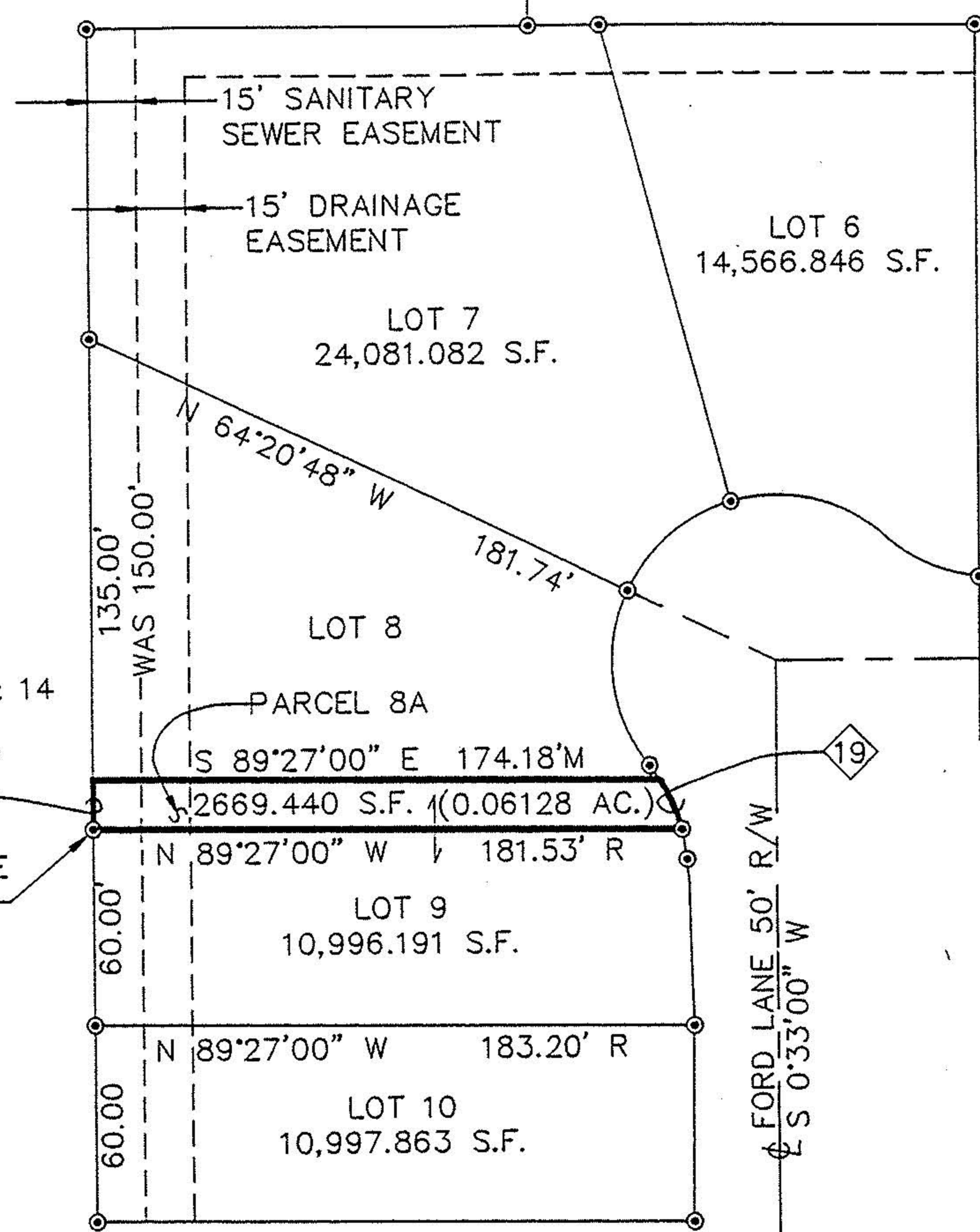


ASSUMED MERIDIAN



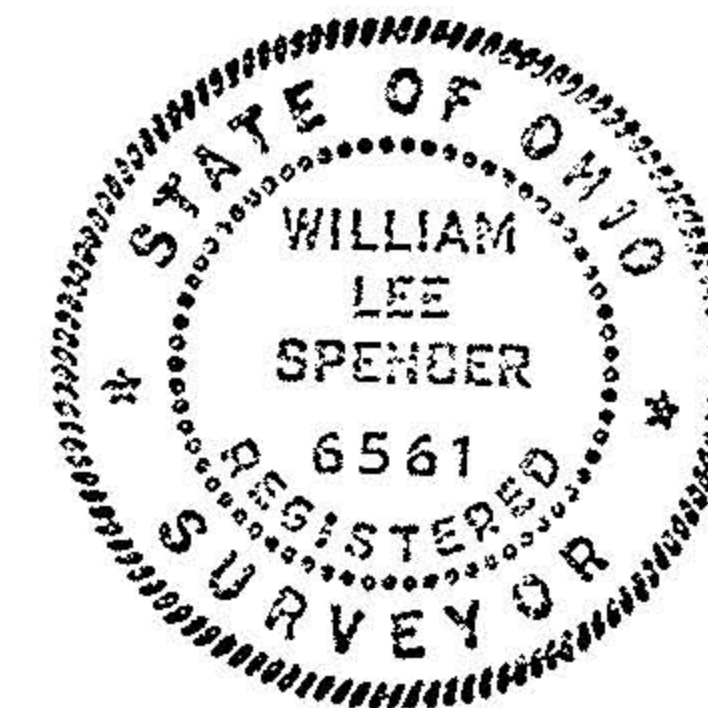
ELBERTA BEACH SUBDIVISION
P.V. 10 P. 13 & 14

N 0°06'00" W
15.00'M

PRINCIPAL PLACE OF BEGINING

LEGEND

- IRON PIN MONUMENTS WERE EITHER FOUND OR SET
- LOT LINE
- CENTER LINE
- LOT 8
V.533 P.439
R
M
- SUBDIVISION LOT NUMBER
- DEED VOLUME & PAGE NUMBERS
- RECORD DISTANCE
- MEASURED DISTANCE



#18258

~~02681#~~

APPROVED
LORAIN CO.
MAP DEPT.

DATE 12-19-88

PAGE 1-00-001-B

BY T. McMan

VOID AFTER 18258

C.E. FRANCIS
DID SPLIT

William Lee Spencer

WILLIAM LEE SPENCER
REGISTERED SURVEYOR NO. 6561

CURVE DATA

- 19 CHORD LENGTH = 16.75'M
- CHORD BEARING = S 25°54'24" E
- ARC LENGTH = 16.83'
- CENTRAL ANGLE = 19°17'06"
- RADIUS = 50.00'



GRAPHIC SCALE: 1" = 50'

EDISON VILLAGE ESTATES HOMEOWNER'S
ASSOCIATION PARK
PLAT VOLUME 41, PAGE 15

PART OF LOT 8
EDISON VILLAGE ESTATES HOMEOWNER'S
ASSOCIATION PARK
PART BROWNHELM TOWNSHIP ORIGINAL LOT 1
CITY OF VERMILION LORAIN COUNTY, OHIO

R.E. WARNER & ASSOCIATES
GEMINI TOWERS II 2001 CROCKER ROAD
WESTLAKE, OHIO 44145 TELEPHONE 216/835-9400



JOB NUMBER 13288

DRAWN: BRW

DATE: 7-8-88

CHECKED: WLS

SCALE: 1"=50'-0"

PERPARED FOR:

CASSELL ENTERPRISES

VER-S1

P.P.N. 01-00-001-108-082