

CLEVELAND SANDUSKY (RD.) RD.

SEE 11-00-002-A

W. LINE OF 2

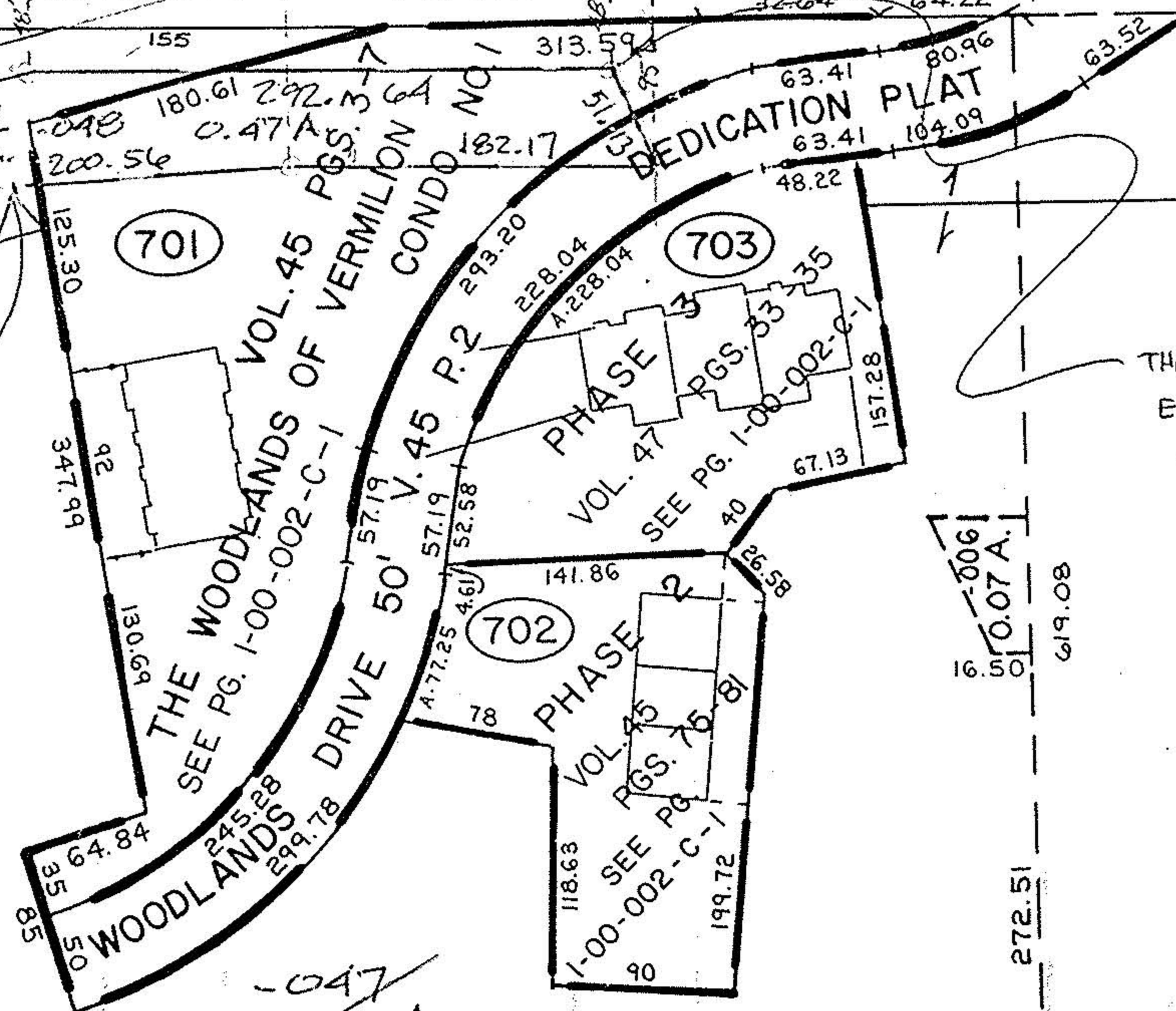
N. Y. C. & ST. L.

500

Pt. -001
Pt. 7.56 A. Dup. 1 R.
Pt. 7.07 A. 2 R.
Pt. 14.63 A. TOTAL

Pl. on S.E.
R/W of N.W. RR.

PARCEL 15WD



THIS DPB IS INT. OF
EXIST. SRG R/W &
the W/R R/W of
WOODLANDS DR.

-027
27.18 A.

-033
23.95 A.

-034
25.02 A.

-047
18.47 A.

-050
~~24.92~~ Ac.
18.02 AC.

-018
30.29 A.

TRANSFERRED
6/3/94. *[Signature]*

#20805

APPROVED
LORAIN CO.
MAP DEPT.
DATE 6-2-94
PAGE 1-00-002-C
BY T. McMan
20805

SEE SURVEY BY - ODOT
DAVID ARMSTRONG PS 5738
JAN. '88
CL. 1: 88, 430
PRIOR INST. REF. - OR 192/281

#20805

APPROVED
LORAIN CO.
MAP DEPT.
DATE 6-2-94
PAGE 1-00-002-C
BY T. McMan
#20805

115

00-001-D

1635-48