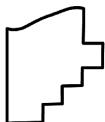
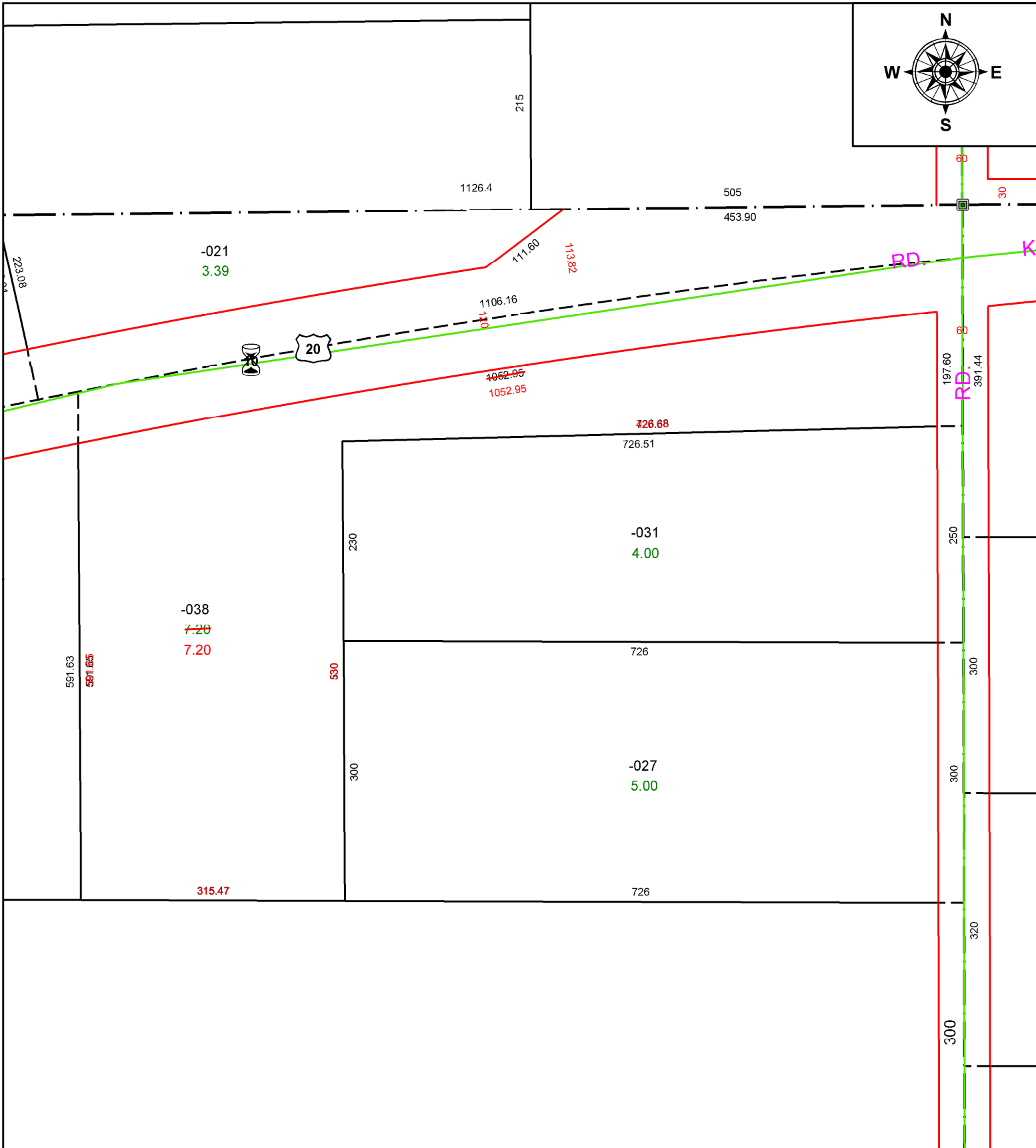
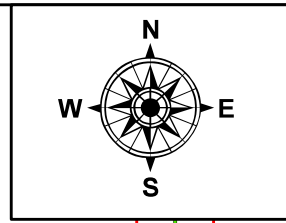


PARENT PARCEL: 14-00-030-000-038

CHILD PARCEL: **AC CORR PER PRIOR DEED INSTRU # 2009-0292402**

STARTING POINT: C/L OF CQUARRY RD AND NE CORNER OF O/L 30

22-04780-A



SPLITS/DEEDS PROCESSED
LORAIN COUNTY TAX MAP DEPARTMENT
226 MIDDLE AVE. ELYRIA, OH

SURVEYED BY: _____ N/A
CLOSURE: 1: 317077110
MAP PAGE(S): 14-00-030
APPROVED BY: AC DATE: 2/3/2022
SCALE: 1" = 150 PRIOR INSTRUMENT: 2009-0292402