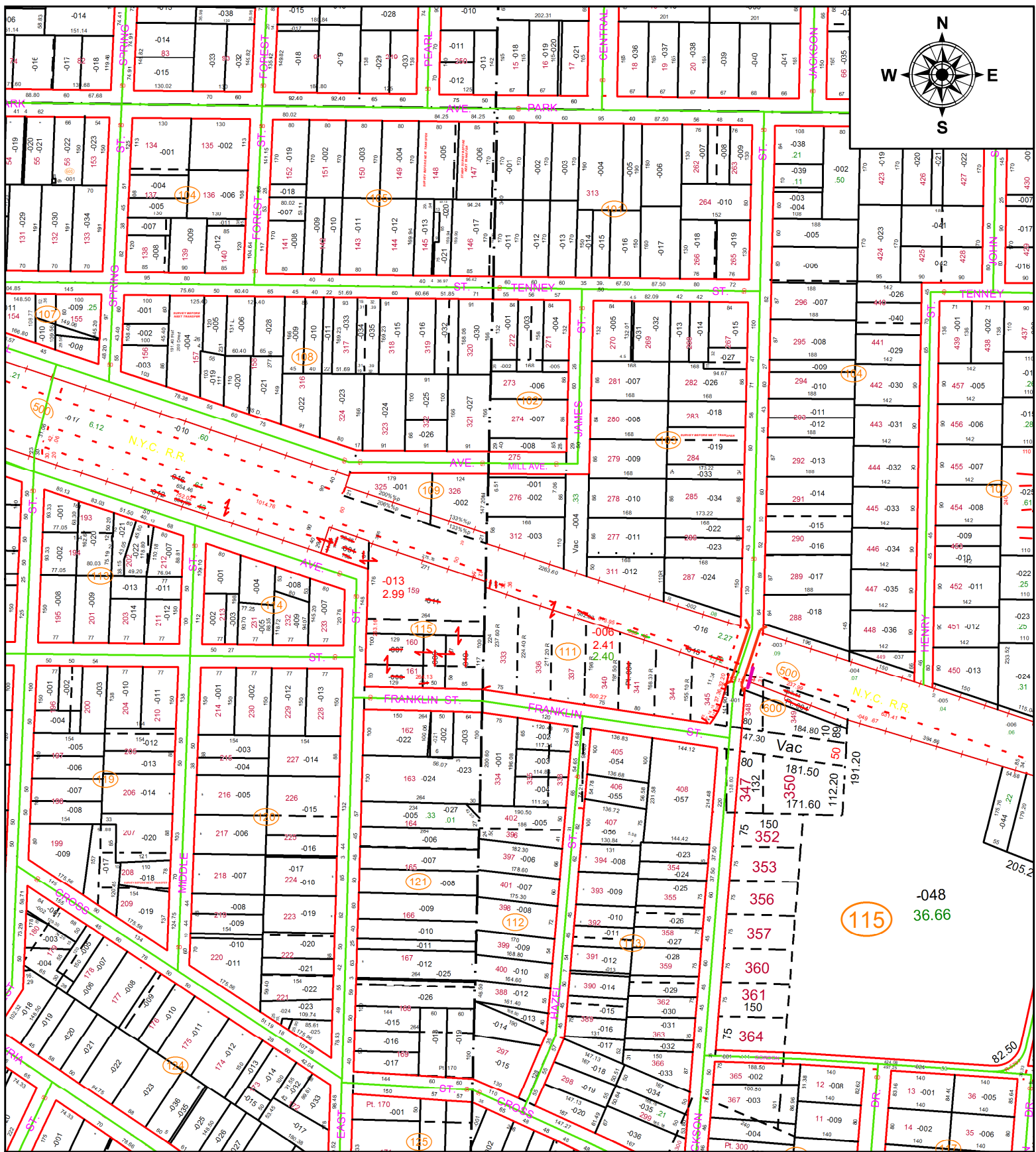


PARENT PARCEL: 05-00-024-115-001, -007 THRU -012, 05-00-037-111-004, 05-00-037-500-015, 05-00-024-500-016

CHILD PARCEL: 05-00-024-115-013, 05-00-037-115-049, 05-00-037-111-005, -006

22-04440

STARTING POINT: E LINE OF EAST ST AND NORTH LINE OF MAPLE AVE



**SPLITS/DEEDS PROCESSED**

LORAIN COUNTY TAX MAP DEPARTMENT  
226 MIDDLE AVE. ELYRIA, OH

SURVEYED BY: AMY M. KELLY

CLOSURE: 1: 2065773

MAP PAGE(S): 05-00-024 & 05-00-037

APPROVED BY: AC DATE: 2/4/2022

SCALE: 1" = 180

PRIOR INSTRUMENT: VOL 1107, PG 573