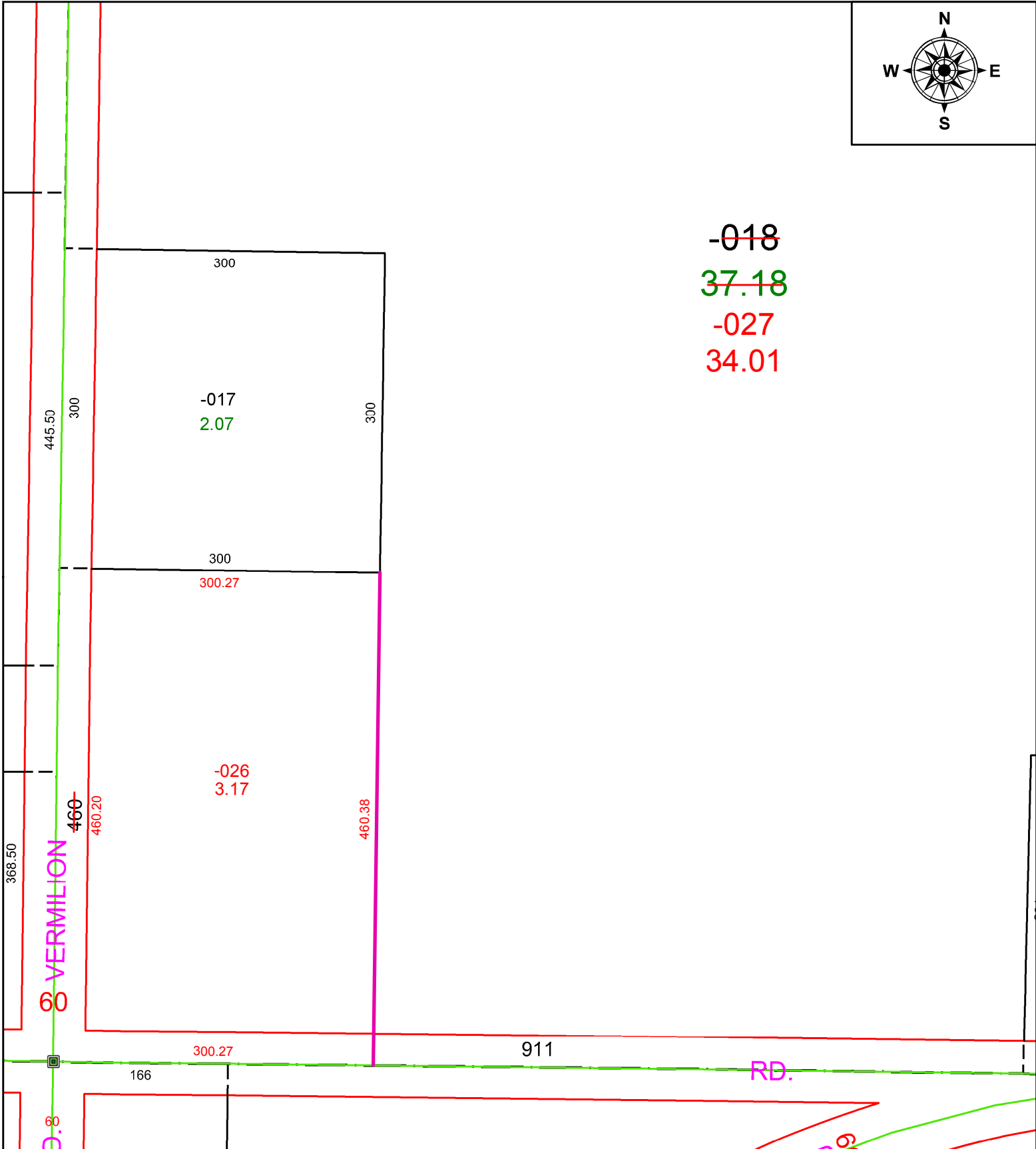
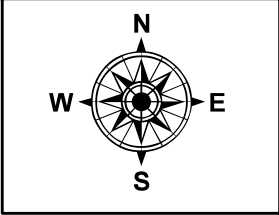


PARENT PARCEL: 08-12-005-000-018

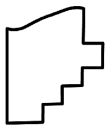
CHILD PARCEL: 08-12-005-000-026, -027

STARTING POINT: C/L OF BECKER AND VERMILION RD

22-04434



~~-018~~
 37.18
~~-027~~
 34.01

 **SPLITS/DEEDS PROCESSED**
 LORAIN COUNTY TAX MAP DEPARTMENT
 226 MIDDLE AVE. ELYRIA, OH

SURVEYED BY: TIMOTHY D. HOZALSKI
CLOSURE: 1: 353891
MAP PAGE(S): 08-12-005-B
APPROVED BY: AC **DATE:** 2/3/2022
SCALE: 1" = 120 **PRIOR INSTRUMENT:** 2012-0434850