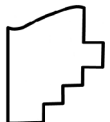
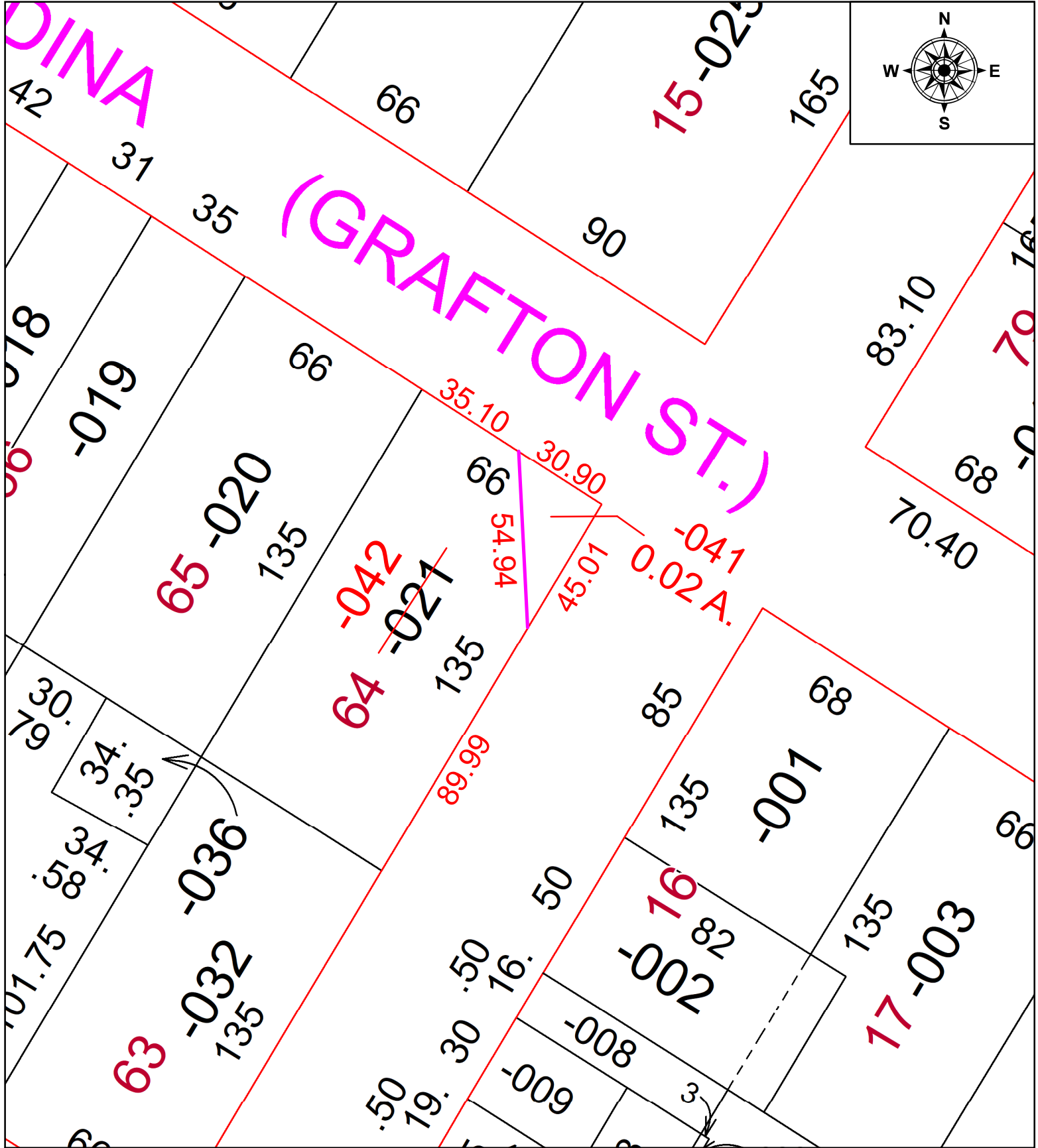


PARENT PARCEL: 16-00-001-107-021

CHILD PARCEL: 16-00-001-107-041 & -042

STARTING POINT: SOUTH R.O.W. OF S.R. 57 & WEST R.O.W. OF MECHANIC ST.

21-00778



SPLITS/DEEDS PROCESSED
 LORAIN COUNTY TAX MAP DEPARTMENT
 226 MIDDLE AVE. ELYRIA, OH

SURVEYED BY: KEVIN CANAVAN
 CLOSURE: 1:21452
 MAP PAGE(S): 16-00-001
 APPROVED BY: TJS DATE: 10/25/2021
 SCALE: 1" = 40' PRIOR INSTRUMENT: 2019-0717846