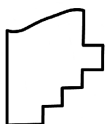
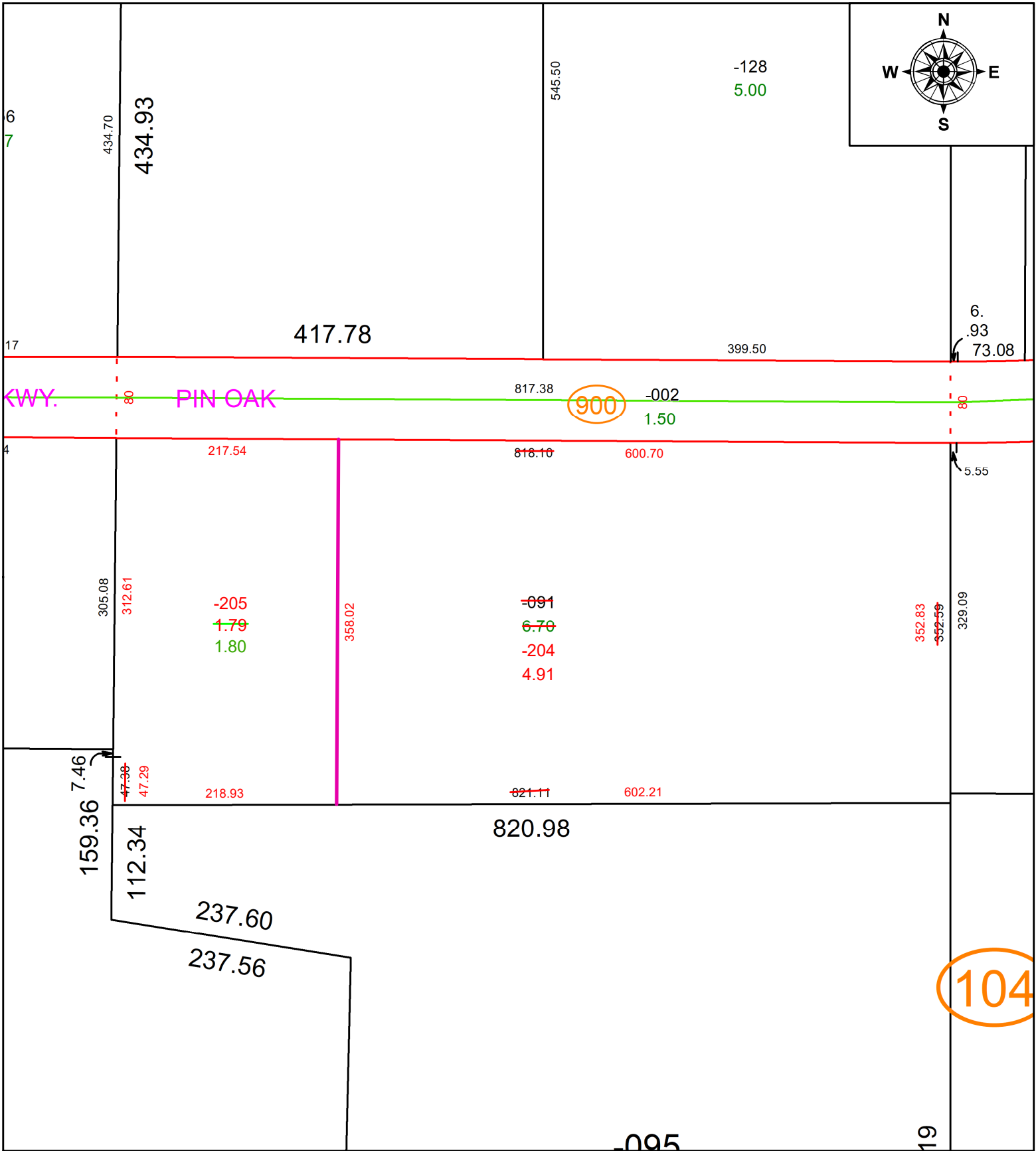


PARENT PARCEL: 04-00-008-104-091

CHILD PARCEL: 04-00-008-104-204 & -205

STARTING POINT: AC CORR PER SURV BY STEVEN J. METCALF

25-04966



SPLITS/DEEDS PROCESSED
 LORAIN COUNTY TAX MAP DEPARTMENT
 226 MIDDLE AVE. ELYRIA, OH

SURVEYED BY: STEVEN J. METCALF SURV # 51375
 CLOSURE: 1: 237281
 MAP PAGE(S): 04-00-008
 APPROVED BY: AC DATE: January 22, 2025
 SCALE: 1 in = 125 ft PRIOR INSTRUMENT: 2023- 0923511