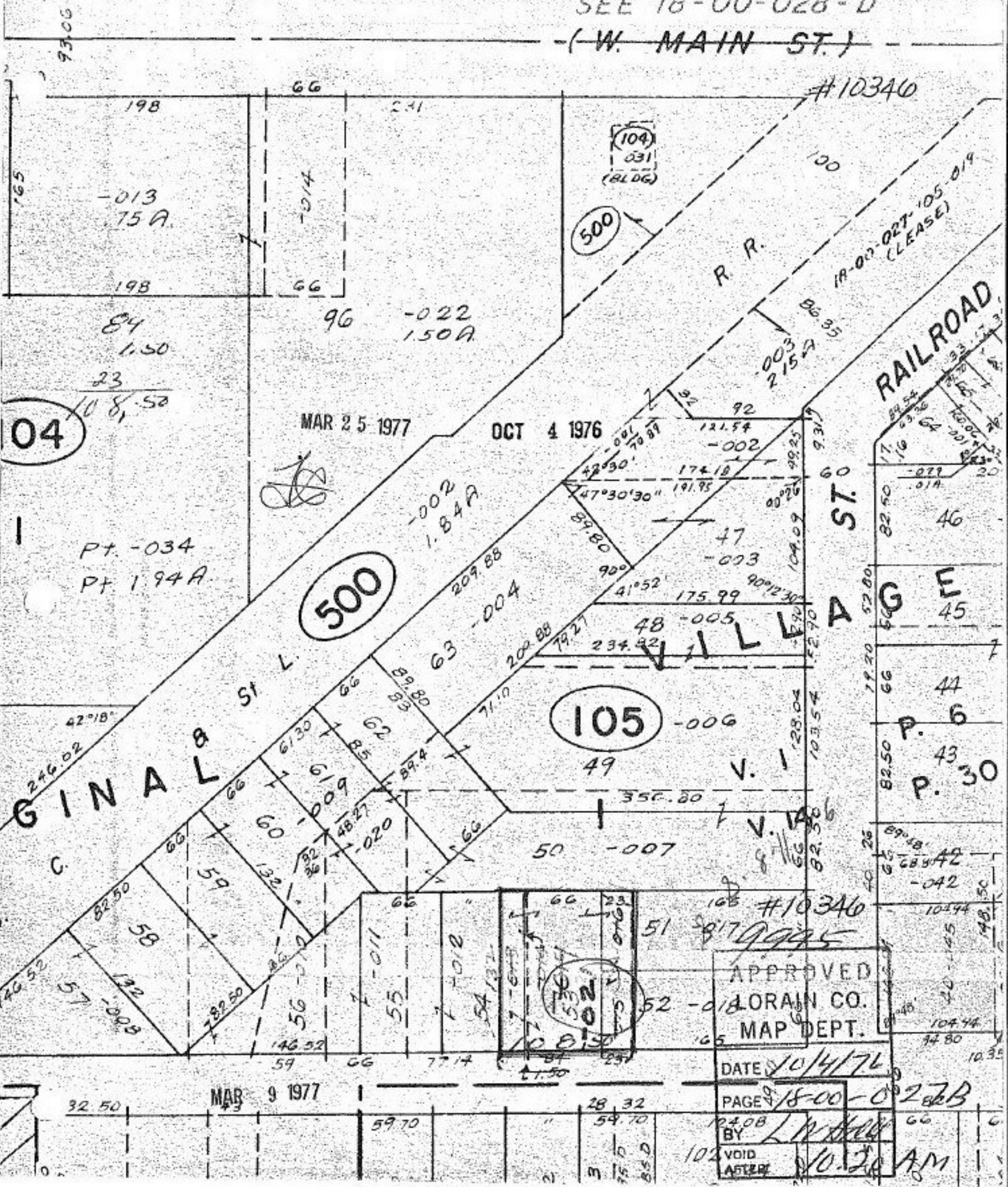


SEE 18-00-028-D
(W. MAIN ST.)



04

500

105

102

APPROVED
LORAIN CO.
MAP DEPT.

DATE 10/4/76

PAGE 18-00-028B

BY [Signature]
VOID AFTER 10:20 AM

MAR 25 1977

OCT 4 1976

MAR 9 1977

#10340

18-00-027-105-019
(LEASE)

R. R.

RAILROAD

ST. A

46

45

44

P. 6

43

P. 30

42

41

40

39

Pt. -034
Pt. 194A

32.50

59.70

28.32

54.70

75.0

85.0

102

102

VOID

AFTER

10:20 AM