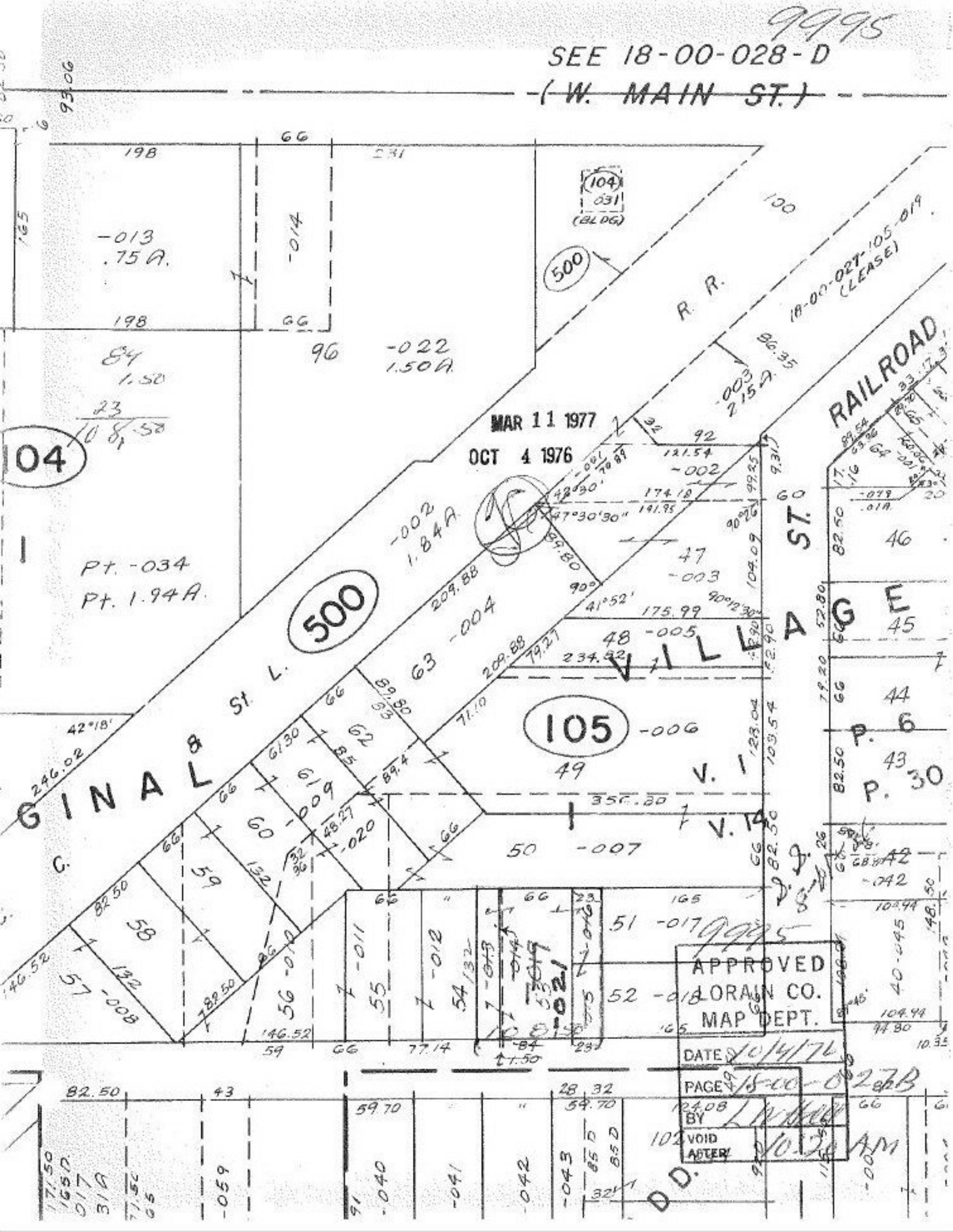


9995  
SEE 18-00-028-D  
(W. MAIN ST.)



04

500

105

APPROVED  
LORAIN CO.  
MAP DEPT.  
DATE 10/4/76  
PAGE 18-00-028-B  
BY L. W. [Signature]  
VOID  
ASTER

Pt. -034  
Pt. 1.94 A.

MAR 11 1977  
OCT 4 1976

GINAB ST. L.

VILLAGE ST.

RAILROAD

17.50	82.50	43	59.70	28.32	54.70	124.08	66	6
165.0								
017								
31A								
71.5C								
65								
-059								
91								
-040								
-041								
-042								
-043								
85.0								
85.0								
32.1								
DD.								
90.28 AM								
-001								