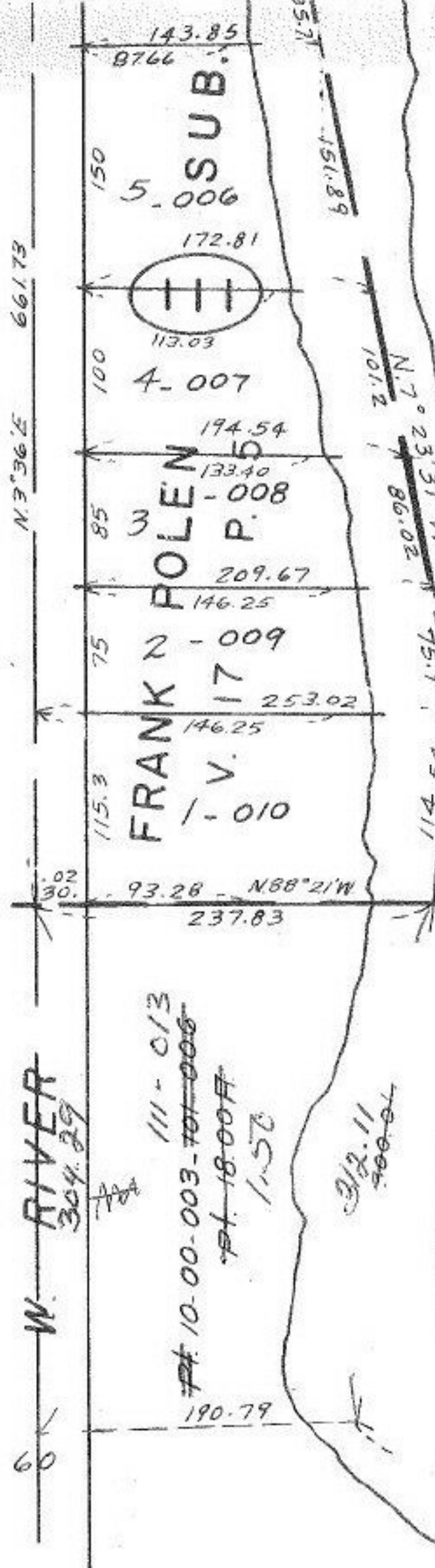


9968

-01.
14.2



OCT 19 1976



SEP 27 1976

9968

APPROVED	
LORAIN CO.	
MAP DEPT.	
DATE	9/27/76
PAGE	10-00-003B
BY	L. W. Hall
VOID AFTER	9.20 AM

W. RIVER
304.29

111-013
Pt 10-00-003-101-006
Pt 18-00-14
25-1
190.79

517.30