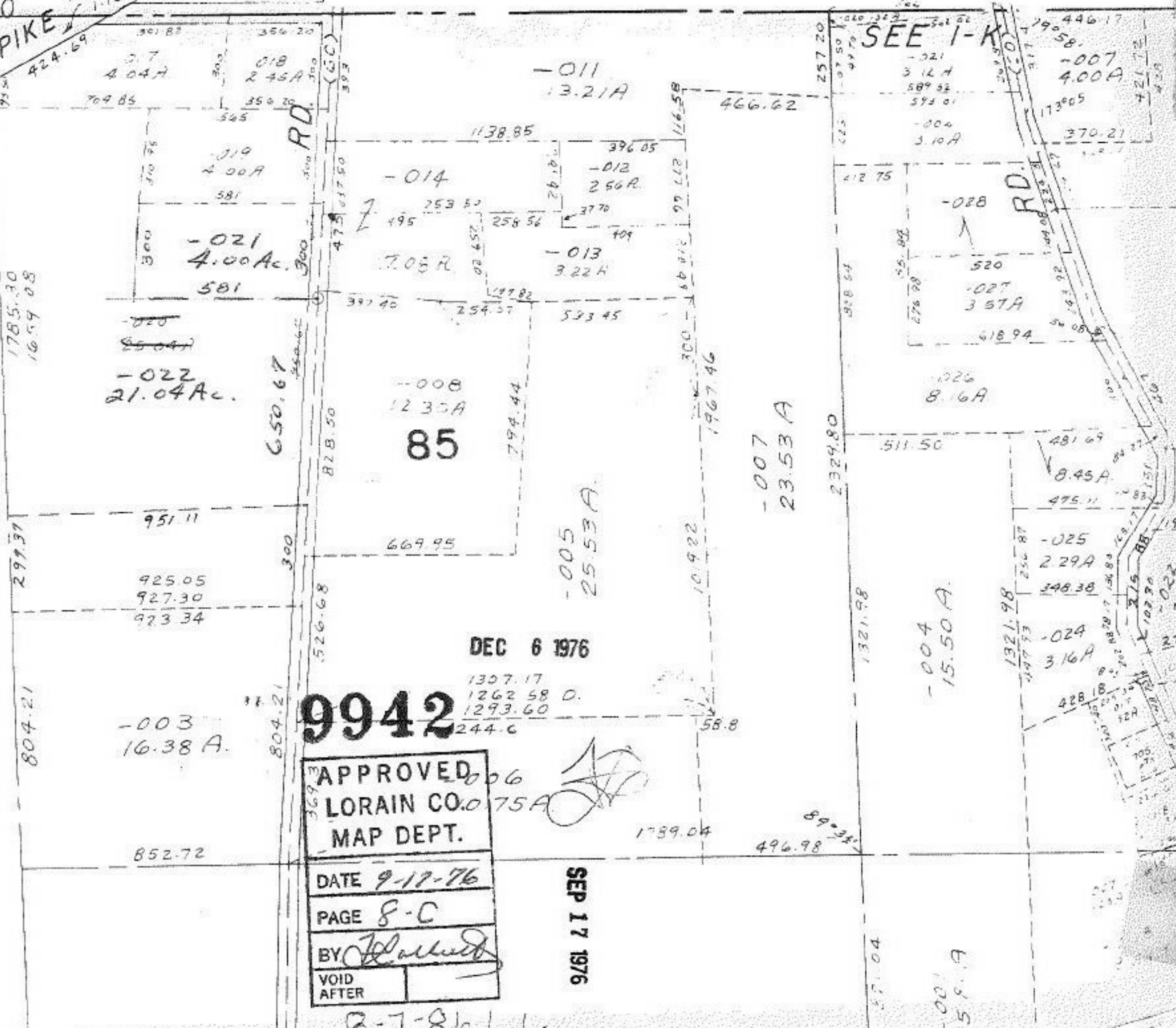


OHIO TURNPIKE  
424.69  
-001  
1.10A

SEE I-K



DEC 6 1976

9942

APPROVED	
LORAIN CO. MAP DEPT.	
DATE	9-17-76
PAGE	8-C
BY	<i>[Signature]</i>
VOID AFTER	

SEP 17 1976

8-7-86 L.L.