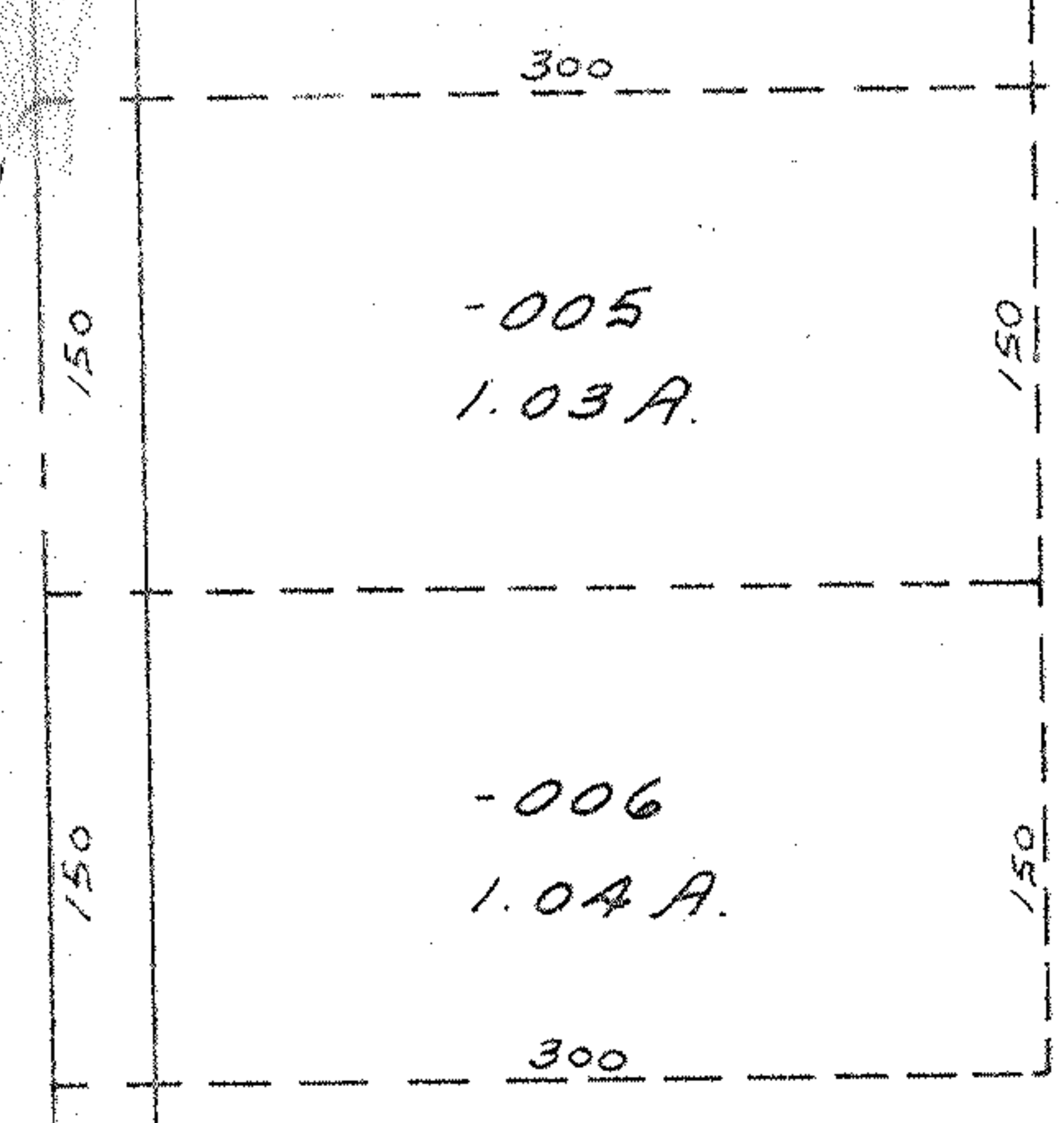


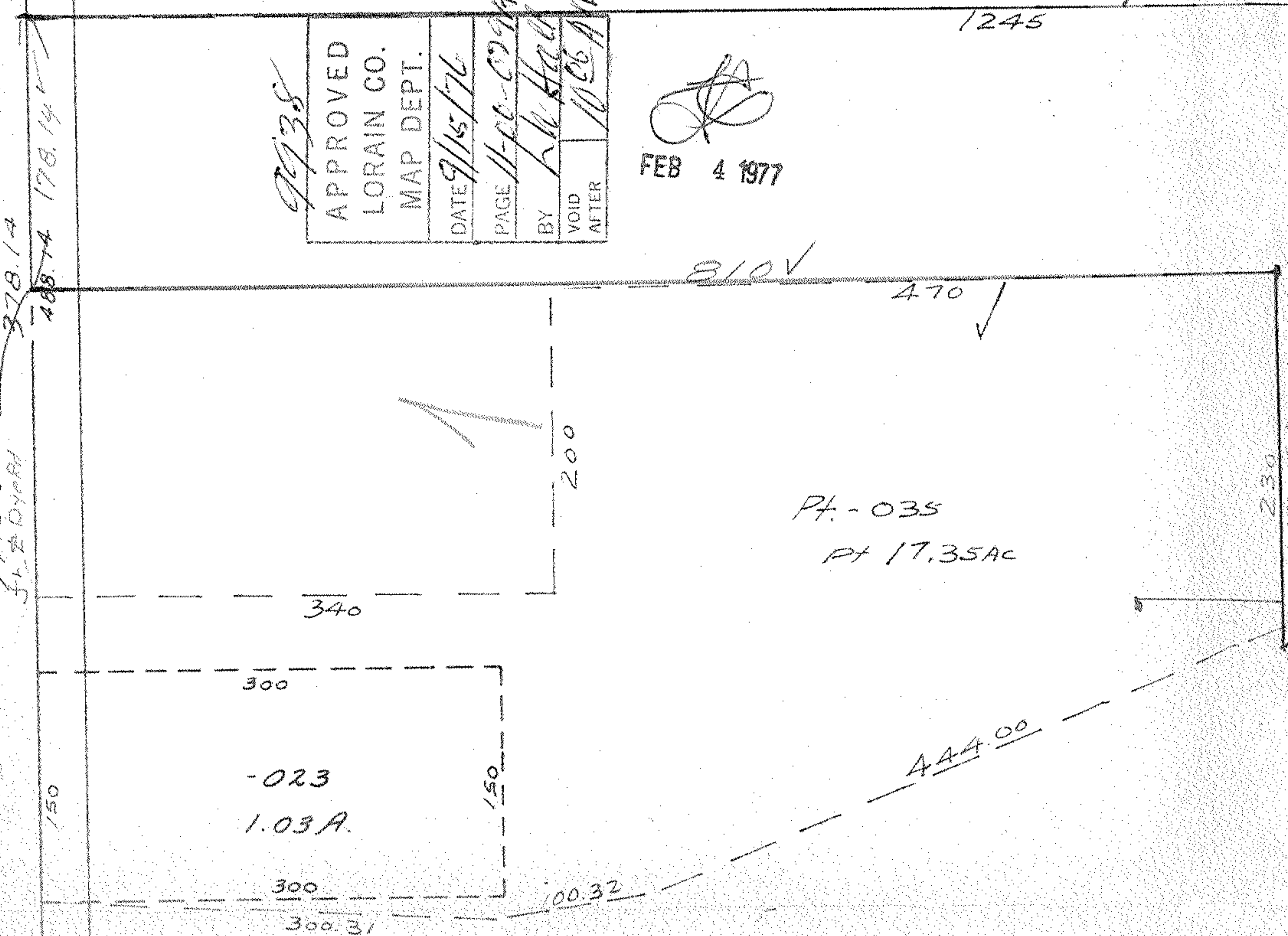
SEE 11-C
1775.69
51.210941
278.14
178.14



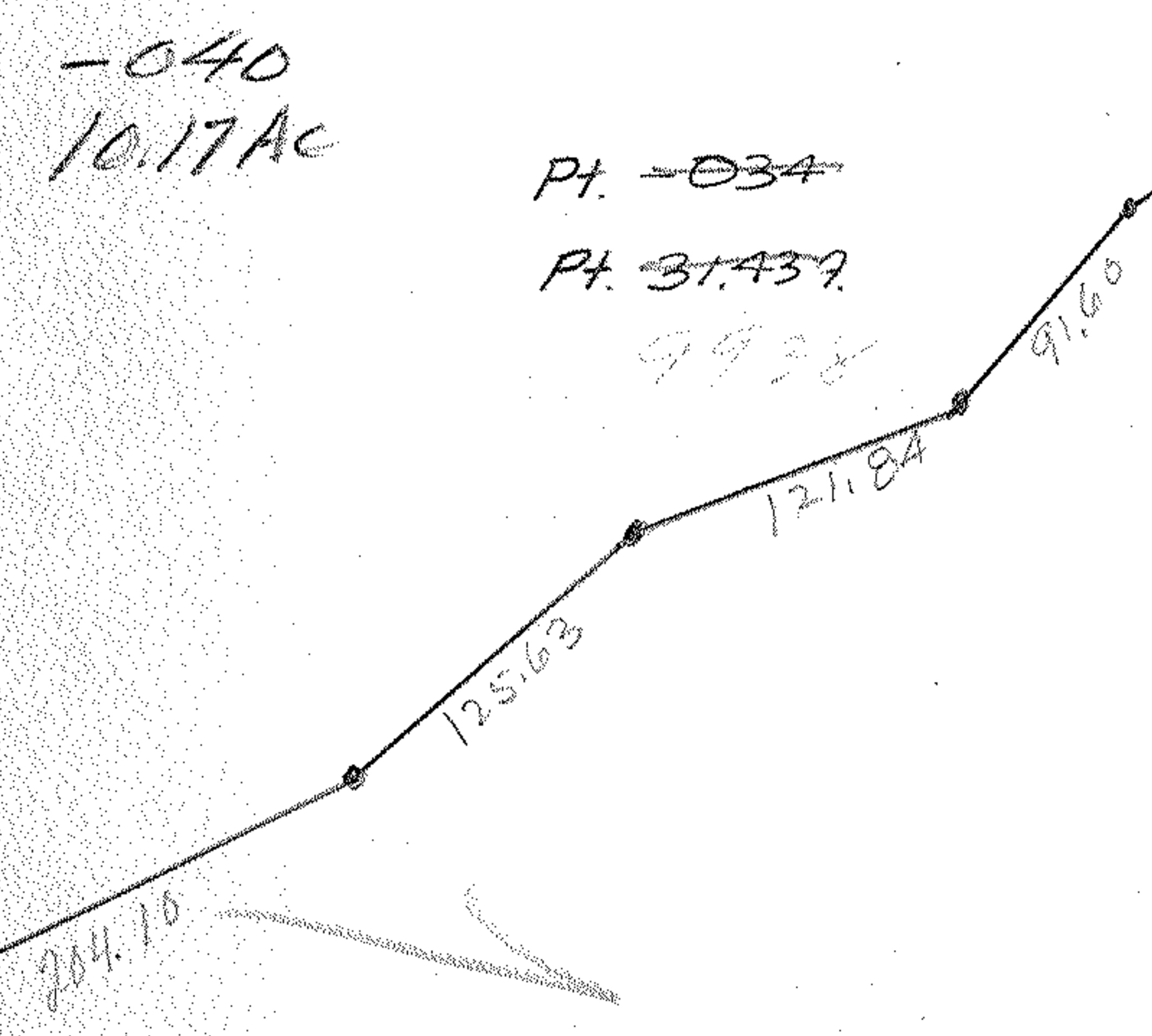
9938
APPROVED
LORAIN CO.
MAP DEPT.
DATE 9/15/76
PAGE 11-00-029-A
BY L. N. H. [Signature]
VOID AFTER 10/26 AM

FEB 4 1977

SEP 15 1976



2013.87
134.05



9938
APPROVED
LORAIN CO.
MAP DEPT.
DATE 9/15/76
PAGE 11-00-029-A
BY L. N. H. [Signature]
VOID AFTER 10/26 AM

2-8
S. [Signature]

Carpenter Ditch
266.62

SEE 11-00-029-B

Pt. -022
Pt. 59.00 A.

