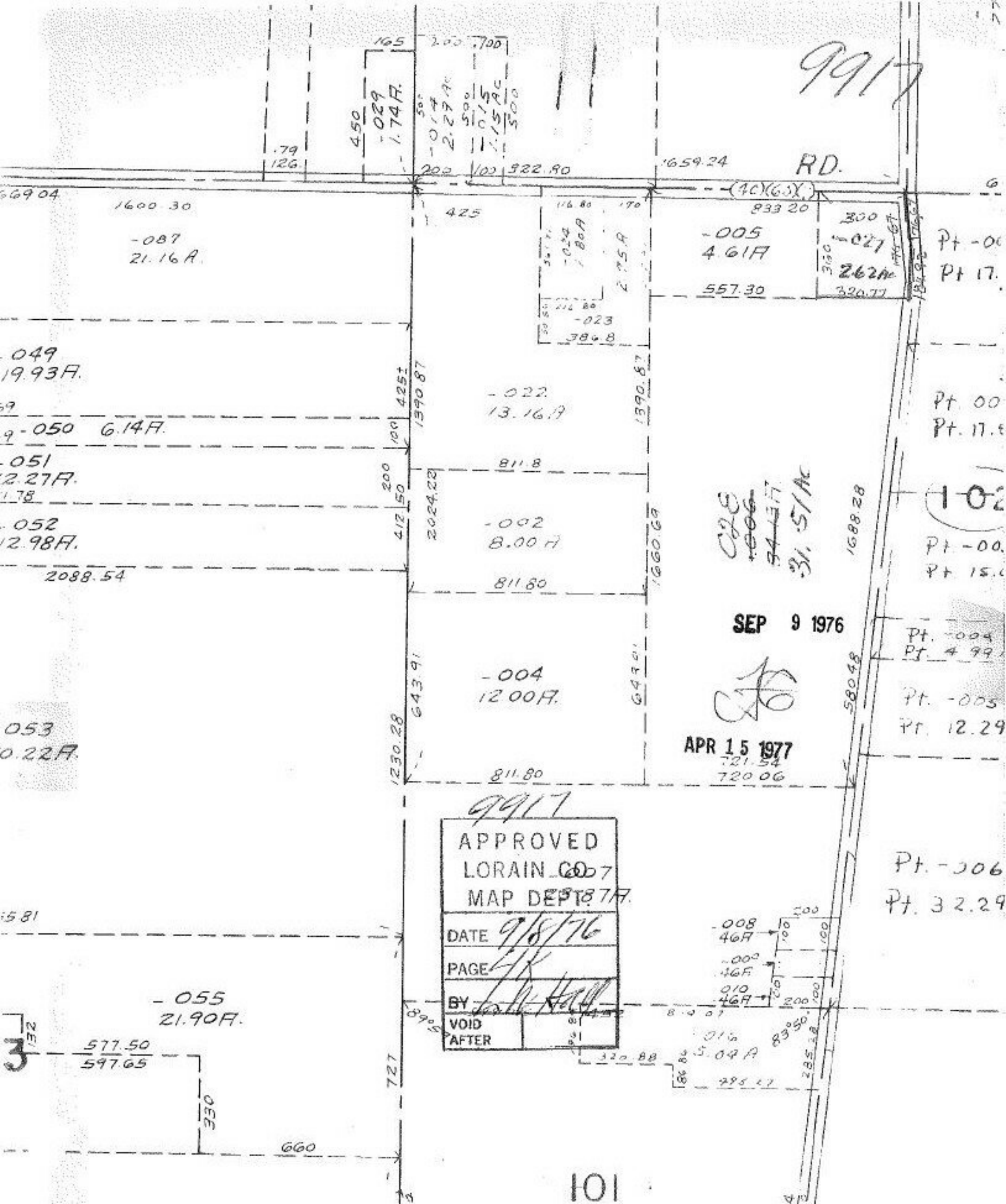


9917

RD.



669.04
1600.30
-087
21.16 A.

049
19.93 A.

9-050 6.14 A.

051
2.27 A.

052
12.98 A.

2088.54

053
0.22 A.

450
-029
1.74 A.

2.00
2.27 A.

0.15
1.15 A.

500

425
116.80
170
833.20
-005
4.61 A
557.30
300
-027
2.62 A
330.77

-022
13.16 A

811.8
-002
8.00 A

811.80
-004
12.00 A

811.80

028
1006
34.13 A
31.57 A

SEP 9 1976

[Signature]

APR 15 1977
721.54
720.06

9917
APPROVED
LORAIN CO. 7
MAP DEPT. 777

DATE 9/8/76
PAGE 4
BY *[Signature]*
VOID AFTER

-008
4.6 A

-000
4.6 A

010
4.6 A

016
5.04 A

225.27

Pt. -001
Pt. 17.

Pt. 00
Pt. 17.9

102
Pt. -00
Pt. 15.0

Pt. -004
Pt. 4.99

Pt. -005
Pt. 12.29

Pt. -006
Pt. 32.29

3

101