

9906

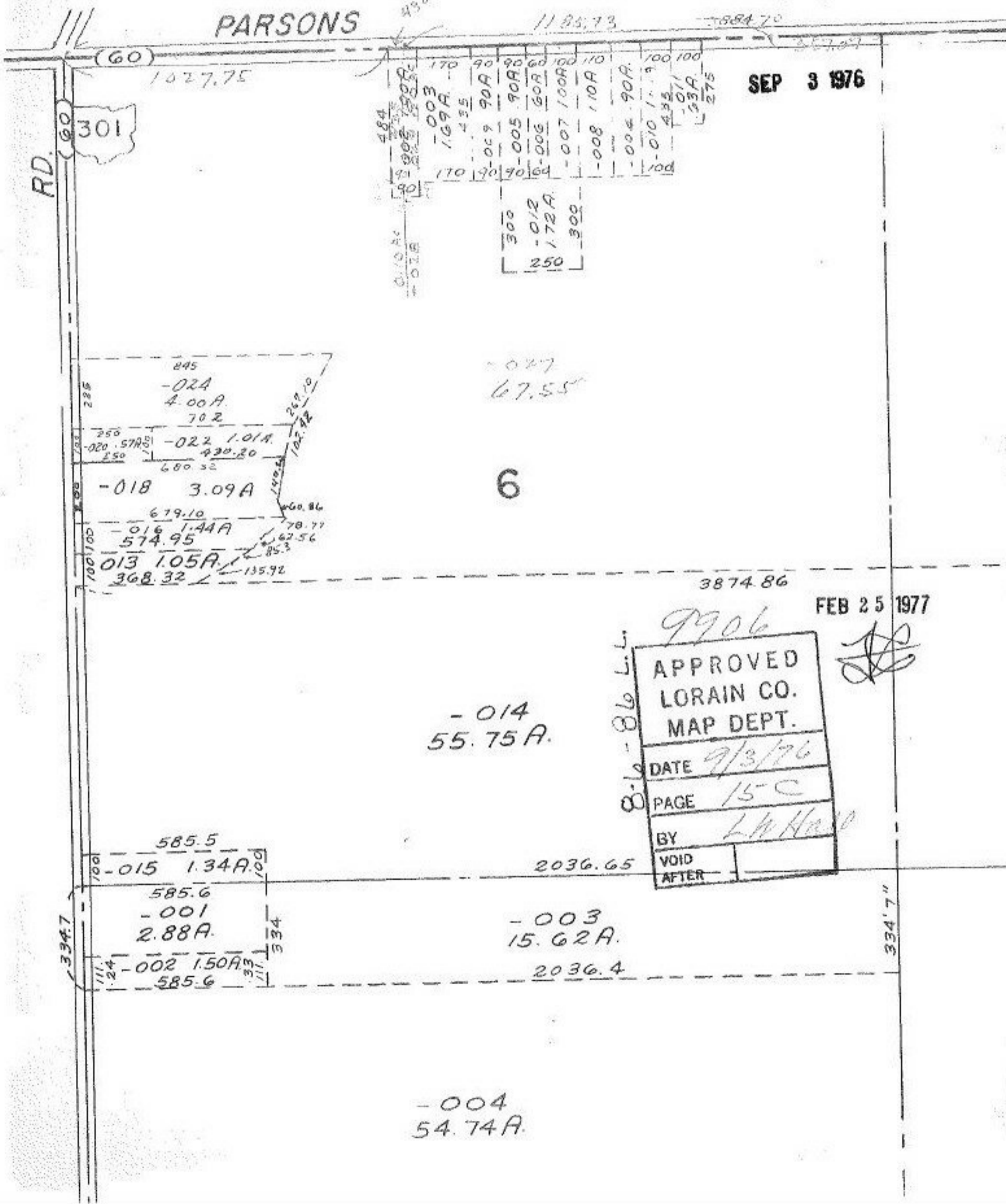
PARSONS

11 85.73

884.70

SEP 3 1976

Signature
DATE



(60)

1027.75

301

RD. 60

484	170	90	90	60	100	110	100	100
0.000	1.09A	4.35	0.05 90A	0.06 60A	0.07 100A	0.08 110A	0.04 90A	0.10 100A
0.018	1.72A	3.00						
0.018	2.50							

845
-024
4.00A
70.2

258
-020 57A
150
-022 1.01A
420.20
680.32

-018 3.09A

679.10
-016 1.44A
574.95

013 1.05A
368.32

269.10
102.92
140.2
60.86
70.77
62.56
85.3
135.92

0.27
67.55

6

3874.86

FEB 25 1977

APPROVED
LORAIN CO.
MAP DEPT.

DATE 9/3/76

PAGE 15-C

BY L.H. HARRIS

VOID
AFTER

-014
55.75A

2036.65

-003
15.62A

2036.4

-004
54.74A

585.5
-015 1.34A

585.6
-001
2.88A

002 1.50A
585.6

334.7

334

334.7"