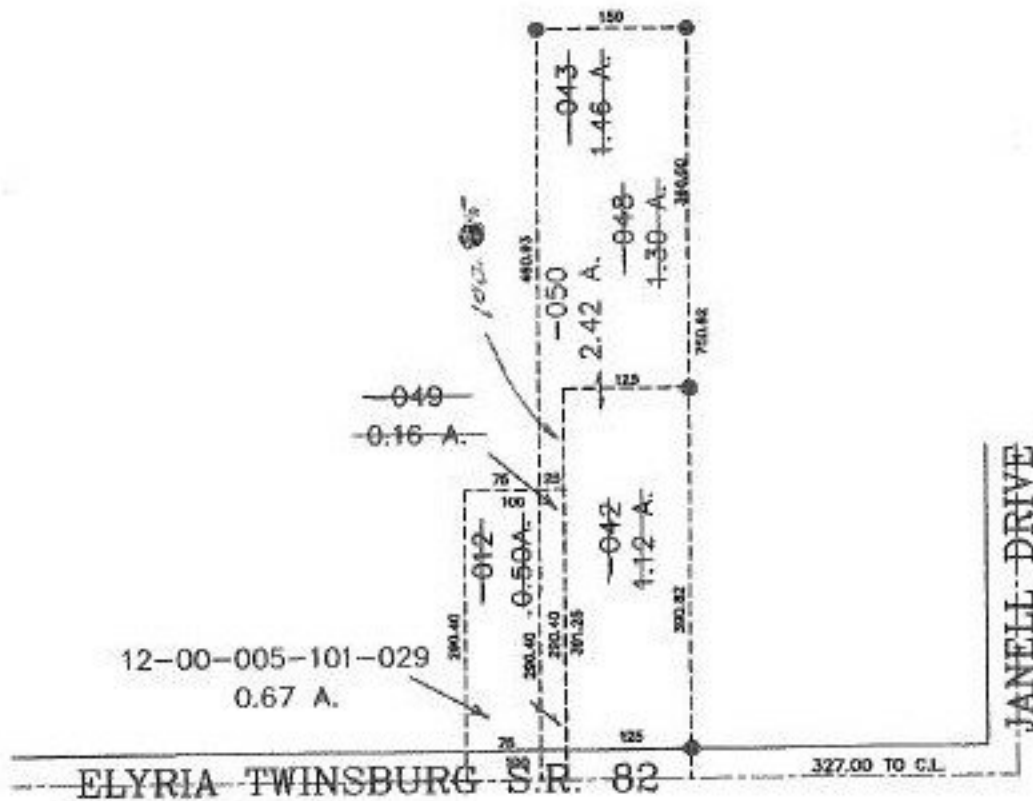


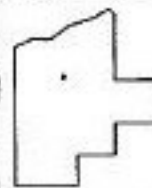
PARENT PARCEL: 12-00-005-102-042, -043, 12-00-005-101-012
CHILD PARCEL: 12-005-102-000-048, -049, -050, 12-00-005-101-029
STARTING POINT: INT C.L. JANELL DR & ELYRIA TWINSBURG RD

NO. 00100



TS
2-21-00

PRIOR INSTRUMENT: DV 753/450
PRIOR INSTRUMENT: DV 1304/399
PRIOR INSTRUMENT: DV 733/450
DOC.# 970476310



SPLITS/DEEDS PROCESSED
LORAIN COUNTY TAX MAP DEPARTMENT
226 MIDDLE AVE. ELYRIA, OHIO

SURVEYED BY: JOHN POZYWAK
CLOSURE: 0.06 : 10.000
MAP PAGE(S): 12-00-005 A&B
APPROVED BY: DRH DATE: 5/19/99
SCALE: 1" = 200'