

PARENT PARCEL: 02-03-006-104-146

CHILD PARCEL: 02-03-006-110-022

STARTING POINT: RE-NUMBER

NO. 00098-X

RE-NUMBER

~~02-03-006-104-146~~

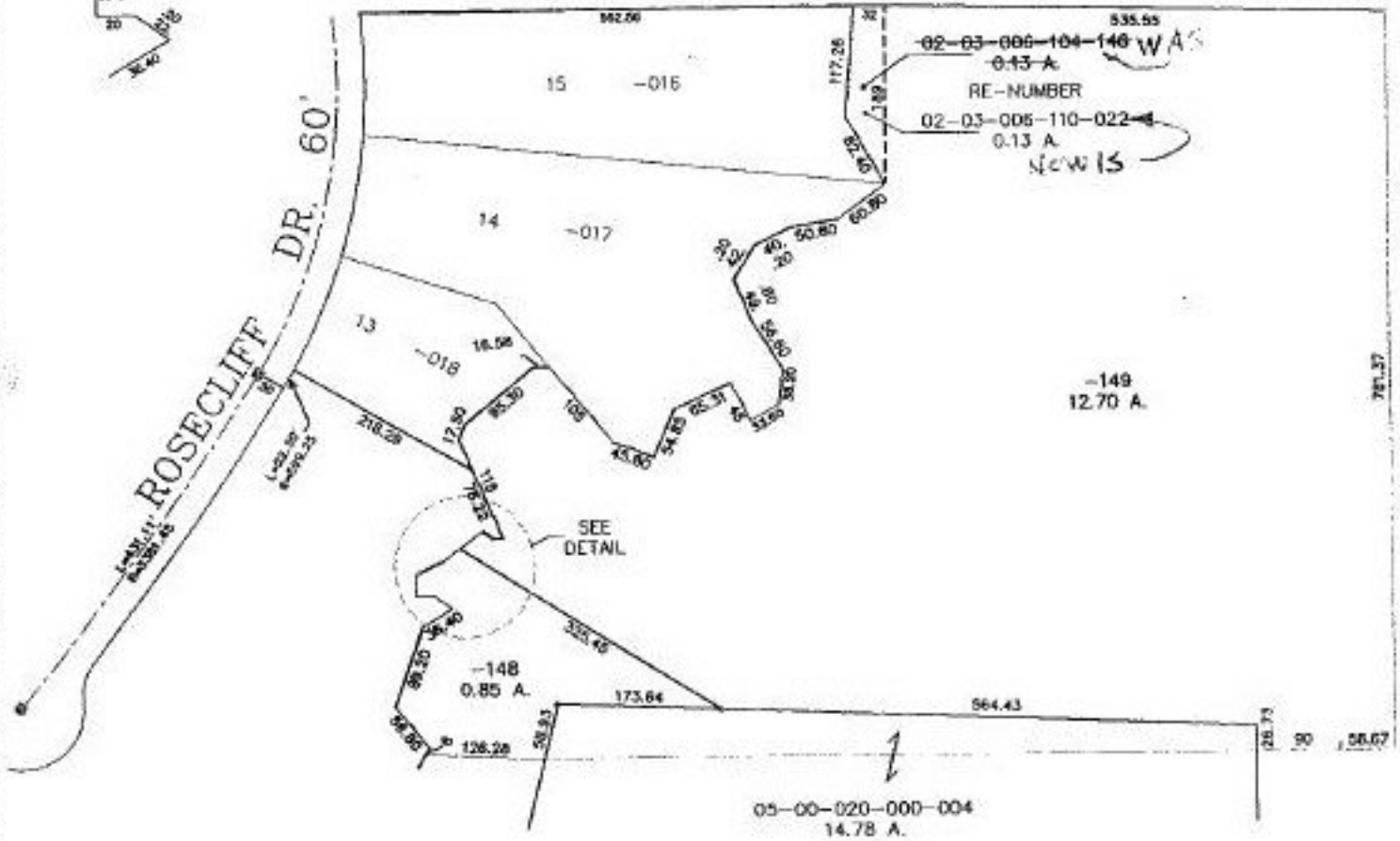
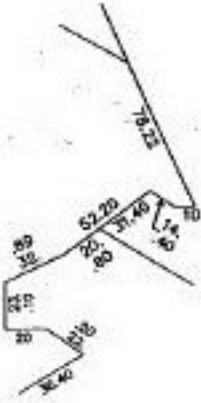
~~0.13 A.~~

02-03-006-110-022

0.13 A.



DETAIL



SPLITS/DEEDS PROCESSED
 LORAIN COUNTY TAX MAP DEPARTMENT
 226 MIDDLE AVE. ELYRIA, OHIO

SURVEYED BY: NA
 CLOSURE: NA
 MAP PAGE(S): 02-03-006-B
 APPROVED BY: IJS DATE: 07/15/99
 SCALE: 1" = 200' PRIOR INSTRUMENT: NA