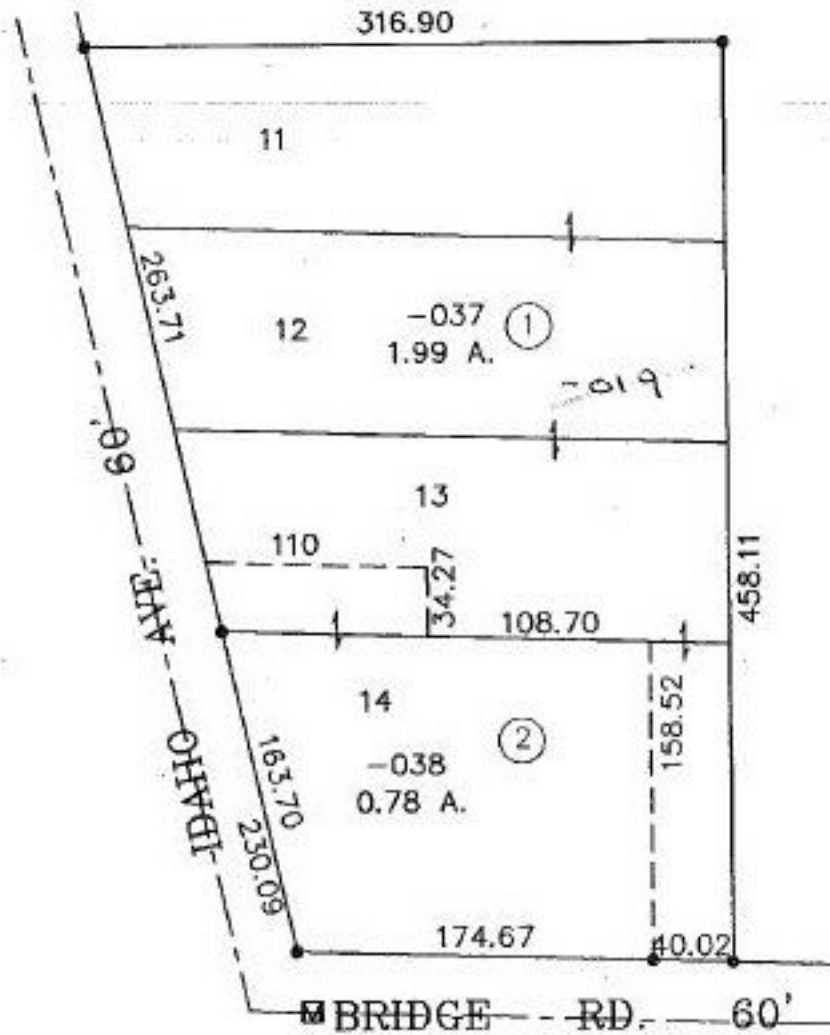


PARENT PARCEL: 02-00-051-141-019

CHILD PARCEL: 02-00-051-141-037, & -038

STARTING POINT: I.P. MON. CL. BRIDGE RD & IDAHO AVE.

NO. 00093



SPLITS/DEEDS PROCESSED
 LORAIN COUNTY TAX MAP DEPARTMENT
 226 MIDDLE AVE. ELYRIA, OHIO

SURVEYED BY: TIMOTHY P. HADDEN C.T. CONSULTANTS
 CLOSURE: 0.09 : 10.000
 MAP PAGE(S): 2-00-051-B
 APPROVED BY: DRH DATE: 5/7/99
 SCALE: 1" = 100' PRIOR INSTRUMENT: OR 26/749