

PARENT PARCEL: 12-00-056-000-030 & 12-00-056-000-032

CHILD PARCEL: 12-00-056-000-047

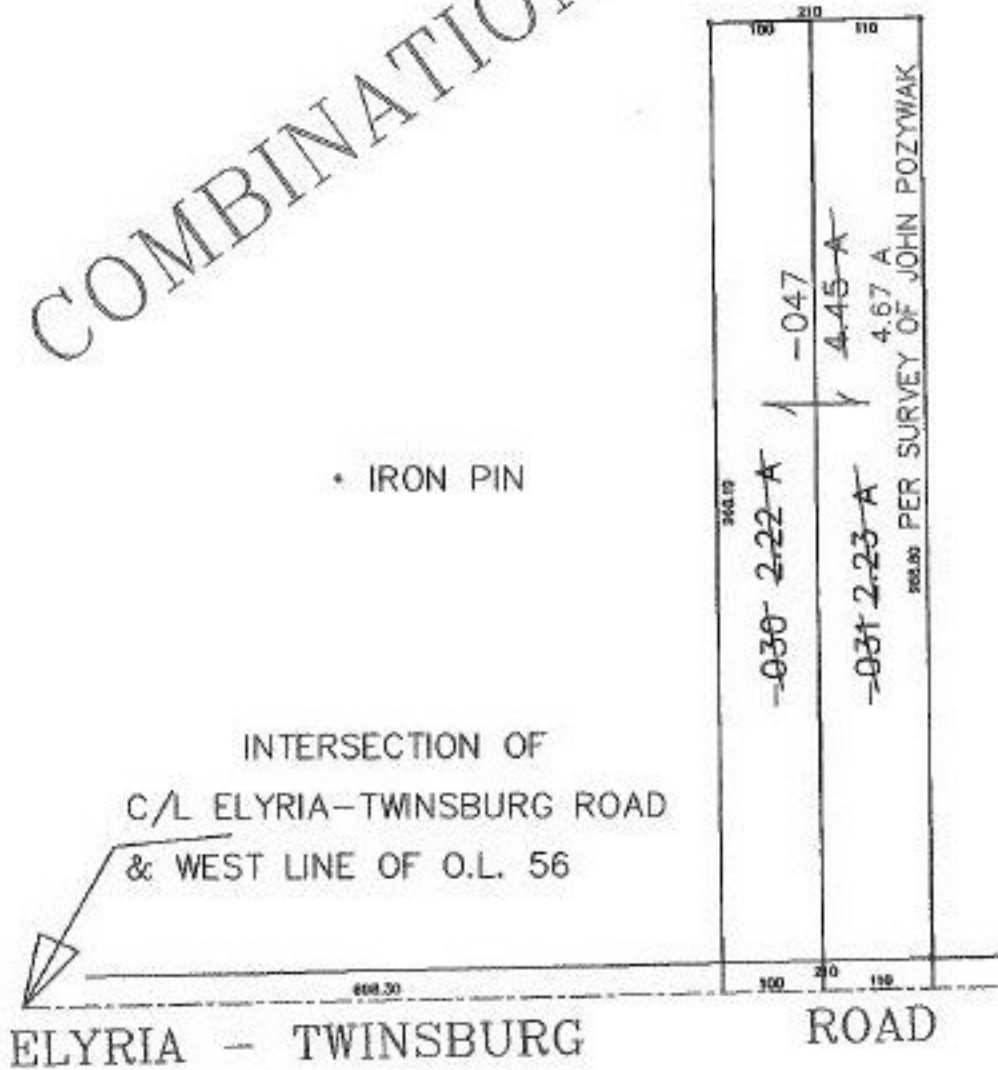
STARTING POINT: WEST LINE OF O.L. 56 & C/L OF ELYRIA-TWINSBURG ROAD

NO. 00081



COMBINATION

• IRON PIN



PRIOR INSTRUMENT: 980518391
PRIOR INSTRUMENT: 980518392



SPLITS/DEEDS PROCESSED
LORAIN COUNTY TAX MAP DEPARTMENT
226 MIDDLE AVE. ELYRIA, OHIO

SURVEYED BY: JOHN POZYWAK
CLOSURE: 0.03 / 10.000
MAP PAGE(S): 12-00-056-A
APPROVED BY: F. COLBERT DATE: 4/29/99
SCALE: 1" = 200'