

PARENT PARCEL: 17-08-023-000-008 & -011

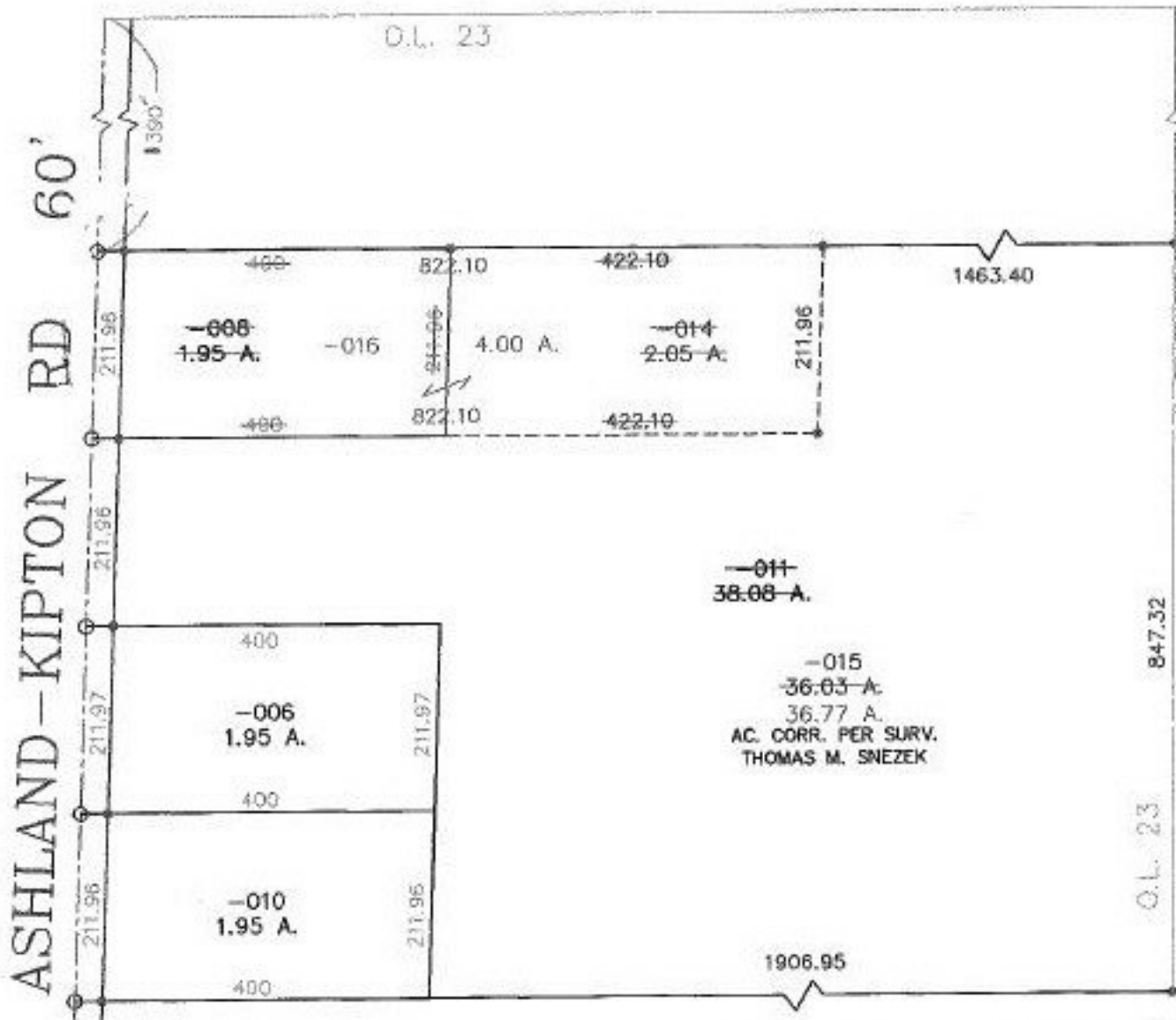
CHILD PARCEL: 17-08-023-000-014 THRU -016

STARTING POINT: CL OF ASHLAND-KIPTON RD. & NORTH LINE OF O.L. 23

NO. 00070



• I.P.  
○ P.K.



-011  
38.08-A.  
  
-015  
36.03-A.  
36.77 A.  
AC. CORR. PER SURV.  
THOMAS M. SNEZEK

TJS  
2-22-00

PRIOR INSTRUMENT: OR 296/447  
PRIOR INSTRUMENT: OR 1366/468



**SPLITS/DEEDS PROCESSED**  
LORAIN COUNTY TAX MAP DEPARTMENT  
226 MIDDLE AVE. ELYRIA, OHIO

SURVEYED BY: THOMAS M. SNEZEK  
CLOSURE: 0.00 : 10.000  
MAP PAGE(S): 17-C  
APPROVED BY: TJS DATE: 04/21/99  
SCALE: 1" = 200'