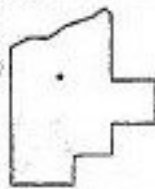
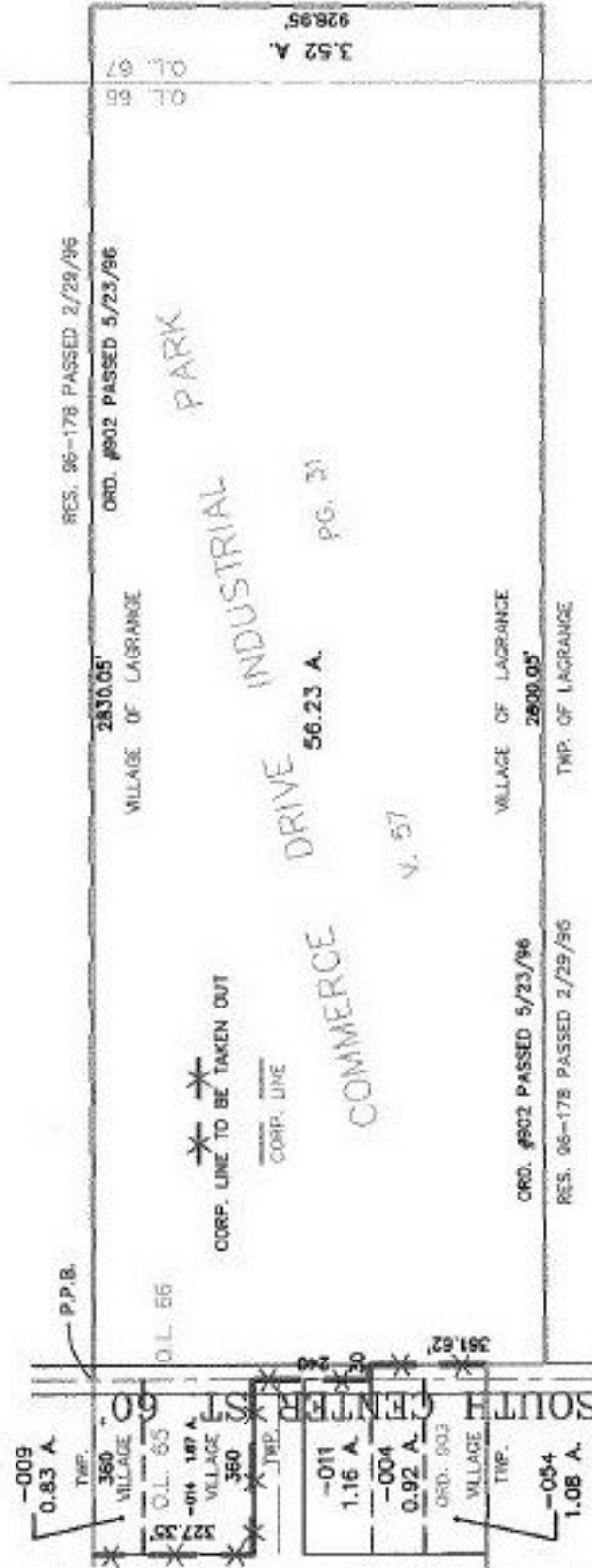


PARENT PARCEL: ANNEXATION

CHILD PARCEL: XX-XX-XXX-XXX-XXX

STARTING POINT: CL OF S. CENTER ST. (S.R. 301) & N.E. CORNER OF O.L. 65

NO. 00069-X



**SPLITS/DEEDS PROCESSED**  
**LORAIN COUNTY TAX MAP DEPARTMENT**  
 226 MIDDLE AVE. ELYRIA, OHIO

SURVEYED BY: RODGER G. SIMON  
 CLOSURE: CAN'T RUN  
 MAP PAGE(S): 15-00-065-B, 15-00-066-A & B  
 APPROVED BY: TJS DATE: 06/11/99  
 SCALE: 1" = 400' PRIOR INSTRUMENT: \_\_\_\_\_