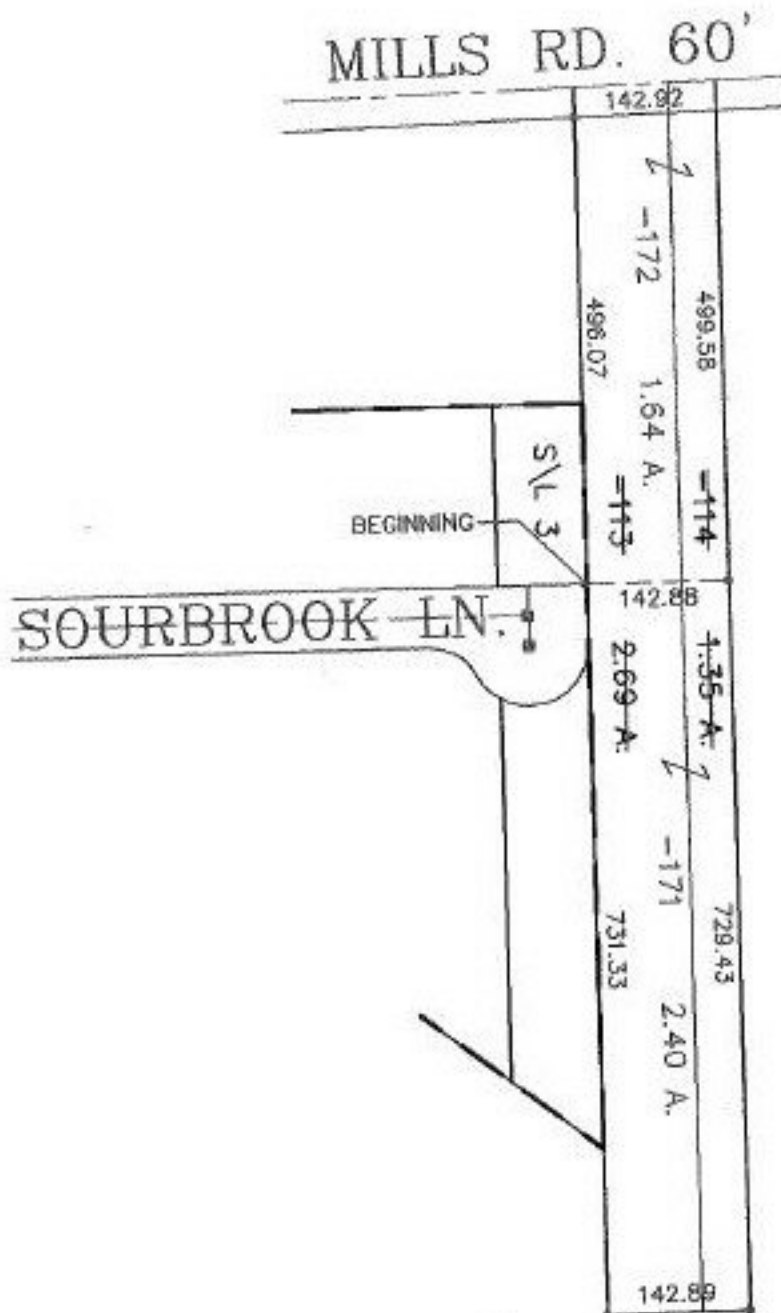


PARENT PARCEL: 07-00-006-102-113 & -114

CHILD PARCEL: 07-00-006-102-171 & -172

STARTING POINT: NORTH R.O.W. OF SOURBROOK LN. & THE S.E. CORNER OF S/L 3 IN STETSON SUB.

NO. 00063



SPLITS/DEEDS PROCESSED
LORAIN COUNTY TAX MAP DEPARTMENT
 226 MIDDLE AVE. ELYRIA, OHIO

SURVEYED BY: DANE A. HAPONEK
 CLOSURE: 0.02 : 10,000
 MAP PAGE(S): 07-00-006-B
 APPROVED BY: TJS DATE: 04/22/99
 SCALE: 1" = 200' PRIOR INSTRUMENT: OR 204/511