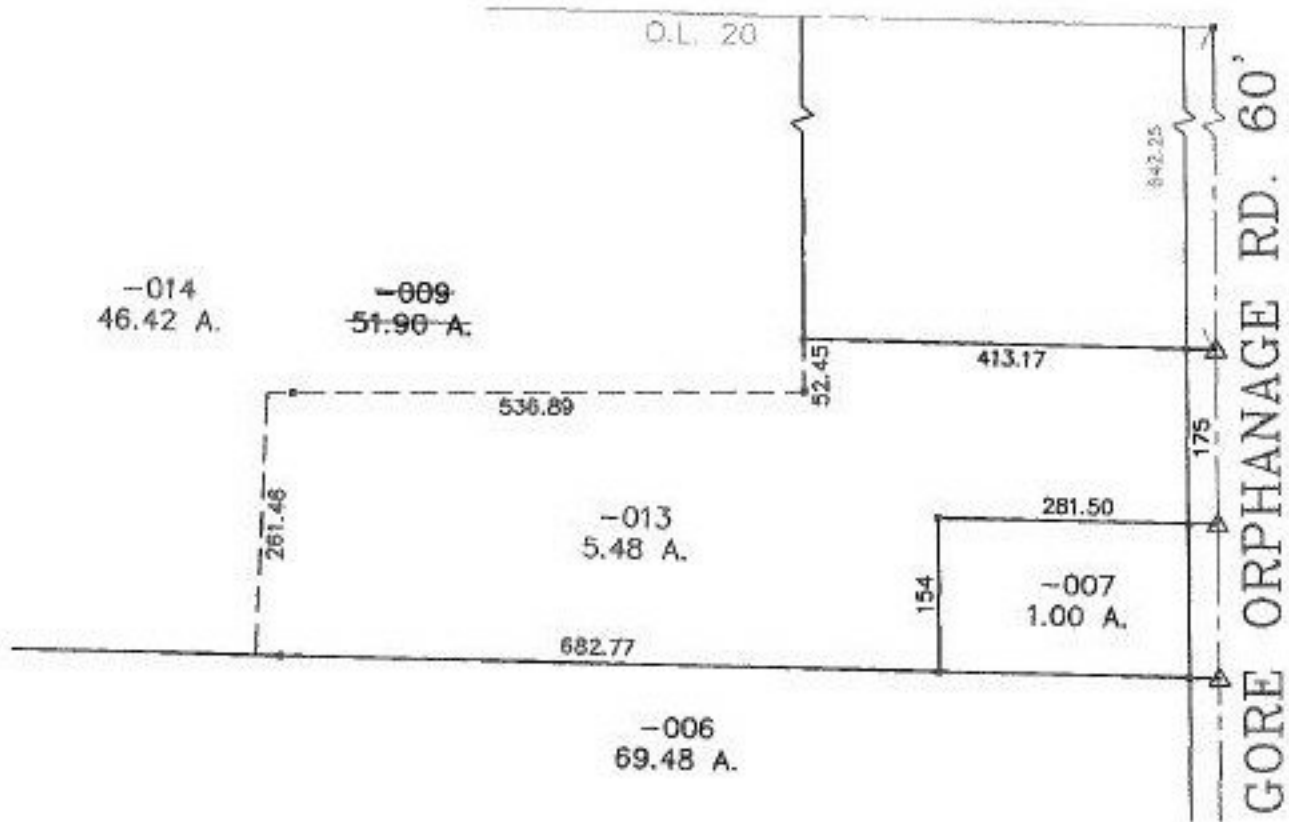


PARENT PARCEL: 13-11-020-000-009

CHILD PARCEL: 13-11-020-000-013 & -014

STARTING POINT: I.P. FOUND IN THE CL OF GORE ORPHANAGE RD. & THE NORTH LINE OF O.L. 20

NO. 00054



SPLITS/DEEDS PROCESSED
LORAIN COUNTY TAX MAP DEPARTMENT
 226 MIDDLE AVE. ELYRIA, OHIO

SURVEYED BY: STEVEN W. CLUTTER
 CLOSURE: 0.01 : 10,000
 MAP PAGE(S): 13-A
 APPROVED BY: IJS DATE: 04/07/99
 SCALE: 1" = 200 PRIOR INSTRUMENT: OR 748/24