

PARENT PARCEL: 03-00-111

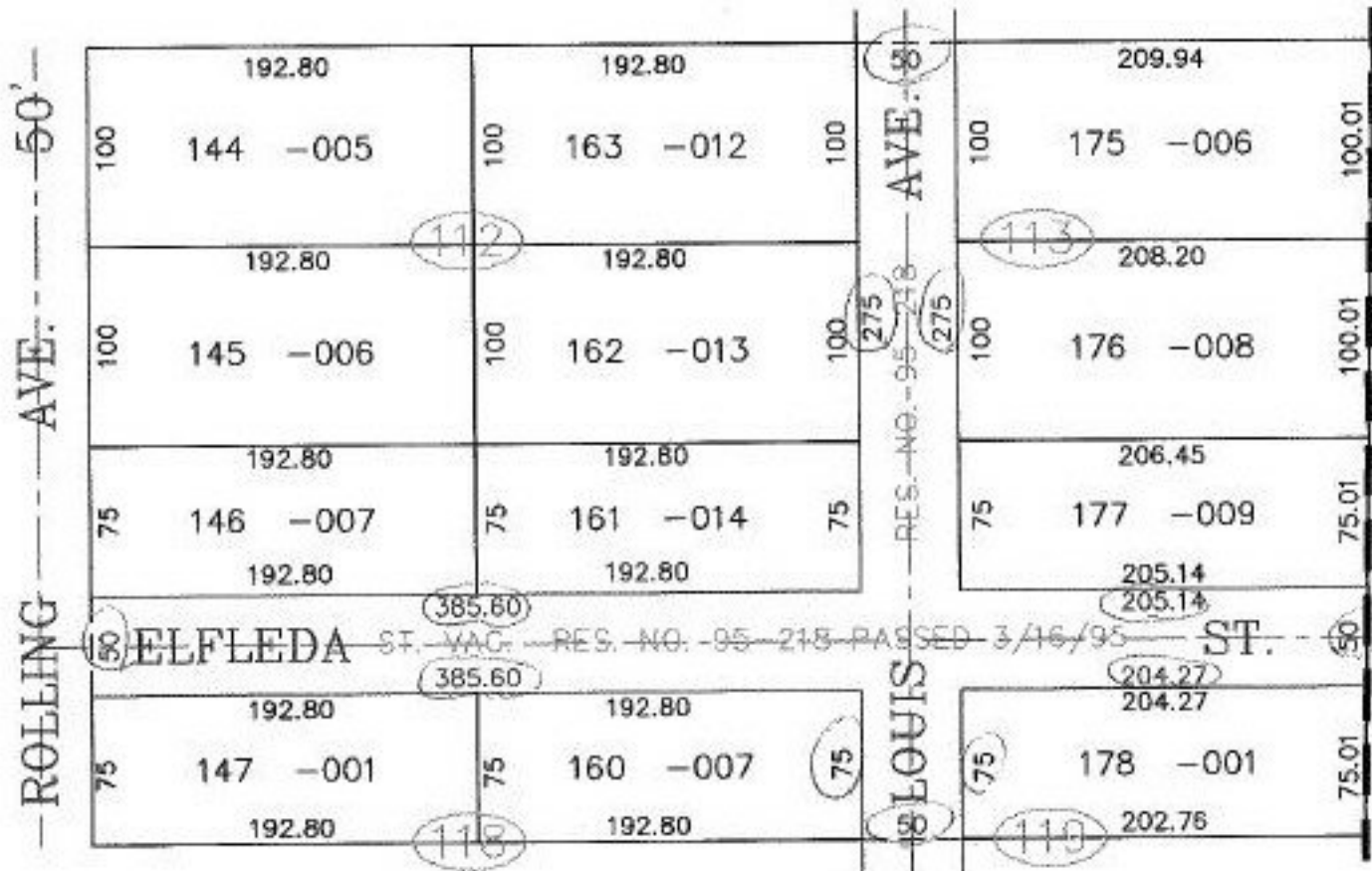
CHILD PARCEL: XX-XX-XXX-XXX-XXX

STARTING POINT: N.W. CORNER OF S\ 179 IN ROLLING HEIGHTS ALLOTMENT

NO. 00046-V

STREET VACATION

EASTERLY END OF ELFLEDA ST. & PT. OF LOUIS AVE.



TJS
3-20-00

SPLITS/DEEDS PROCESSED

LORAIN COUNTY TAX MAP DEPARTMENT
226 MIDDLE AVE. ELYRIA, OHIO

SURVEYED BY: NONE
 CLOSURE: CAN'T RUN
 MAP PAGE(S): 03-00-111-F
 APPROVED BY: TJS DATE: 04/21/99
 SCALE: 1" = 100' PRIOR INSTRUMENT: NONE