

PARENT PARCEL: 16-00-053-000-003

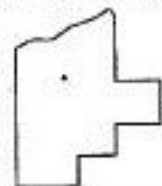
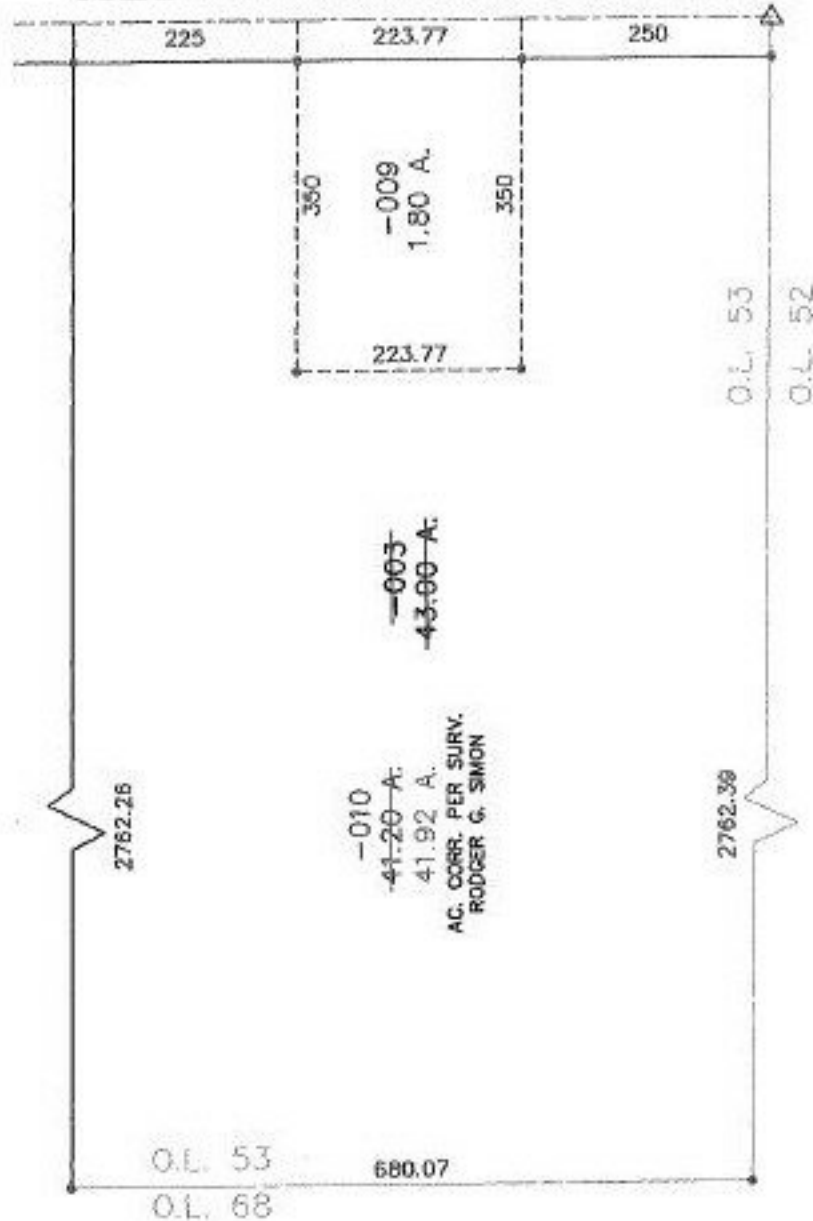
CHILD PARCEL: 16-00-053-000-009 & -010

STARTING POINT: R.R.S. IN THE CL OF MEDINA-ELYRIA RD & N.E. CORNER OF O.L. 53

NO. 00040



MEDINA-ELYRIA RD. 80'



SPLITS/DEEDS PROCESSED
LORAIN COUNTY TAX MAP DEPARTMENT
226 MIDDLE AVE. ELYRIA, OHIO

SURVEYED BY:	RODGER G. SIMON
CLOSURE:	0.01 : 10.000
MAP PAGE(S):	16-H
APPROVED BY:	IJS DATE: 04/02/99
SCALE:	1" = 200' PRIOR INSTRUMENT: OR 442/224