

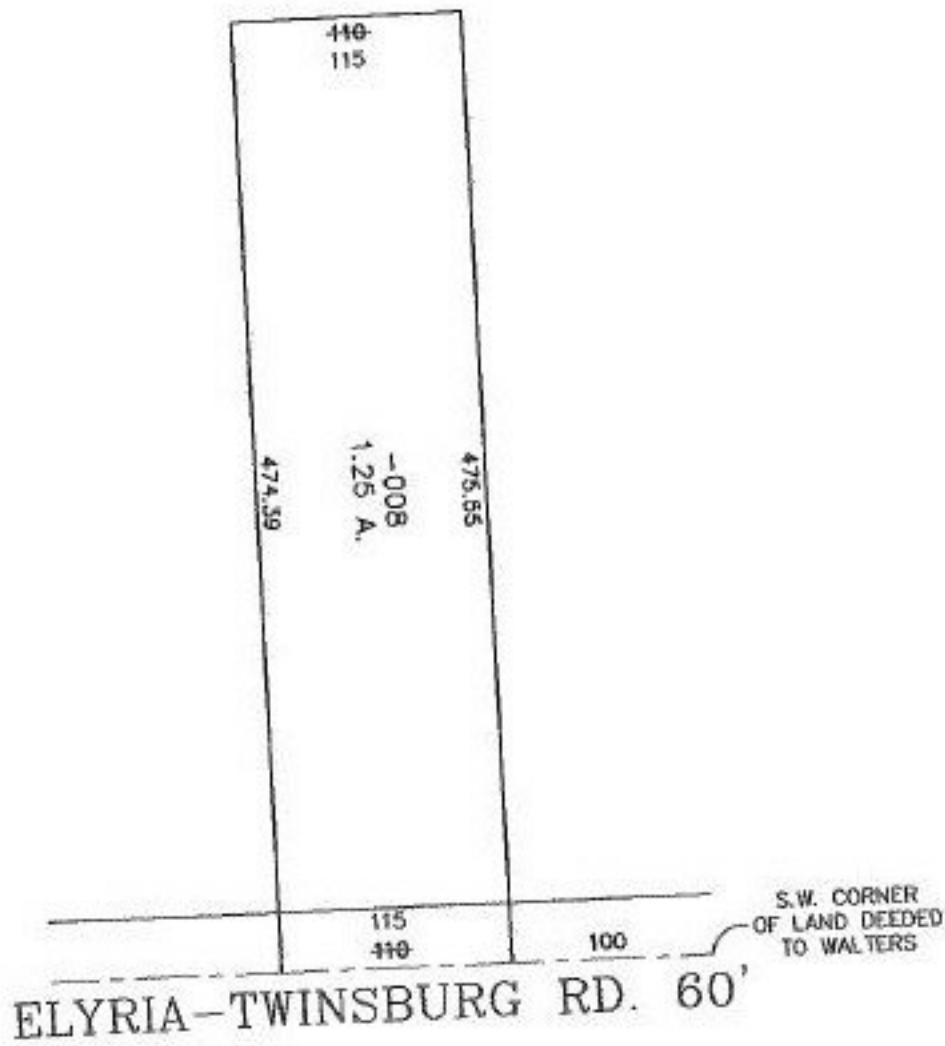
PARENT PARCEL: 11-00-095-000-008

CHILD PARCEL: XX-XX-XXX-XXX-XXX

STARTING POINT: S.W. CORNER OF LAND CONVEYED TO WALTERS

NO. 00021-A

MAP CHANGE ONLY



*RS*  
2-17-00



SPLITS/DEEDS PROCESSED

LORAIN COUNTY TAX MAP DEPARTMENT  
226 MIDDLE AVE. ELYRIA, OHIO

SURVEYED BY: DEED #980541344  
 CLOSURE: 0.11 : 10.000  
 MAP PAGE(S): 11-00-095-B  
 APPROVED BY: IJS DATE: 03/19/99  
 SCALE: 1" = 100' PRIOR INSTRUMENT: 980541344