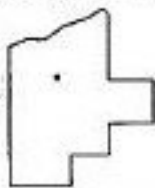
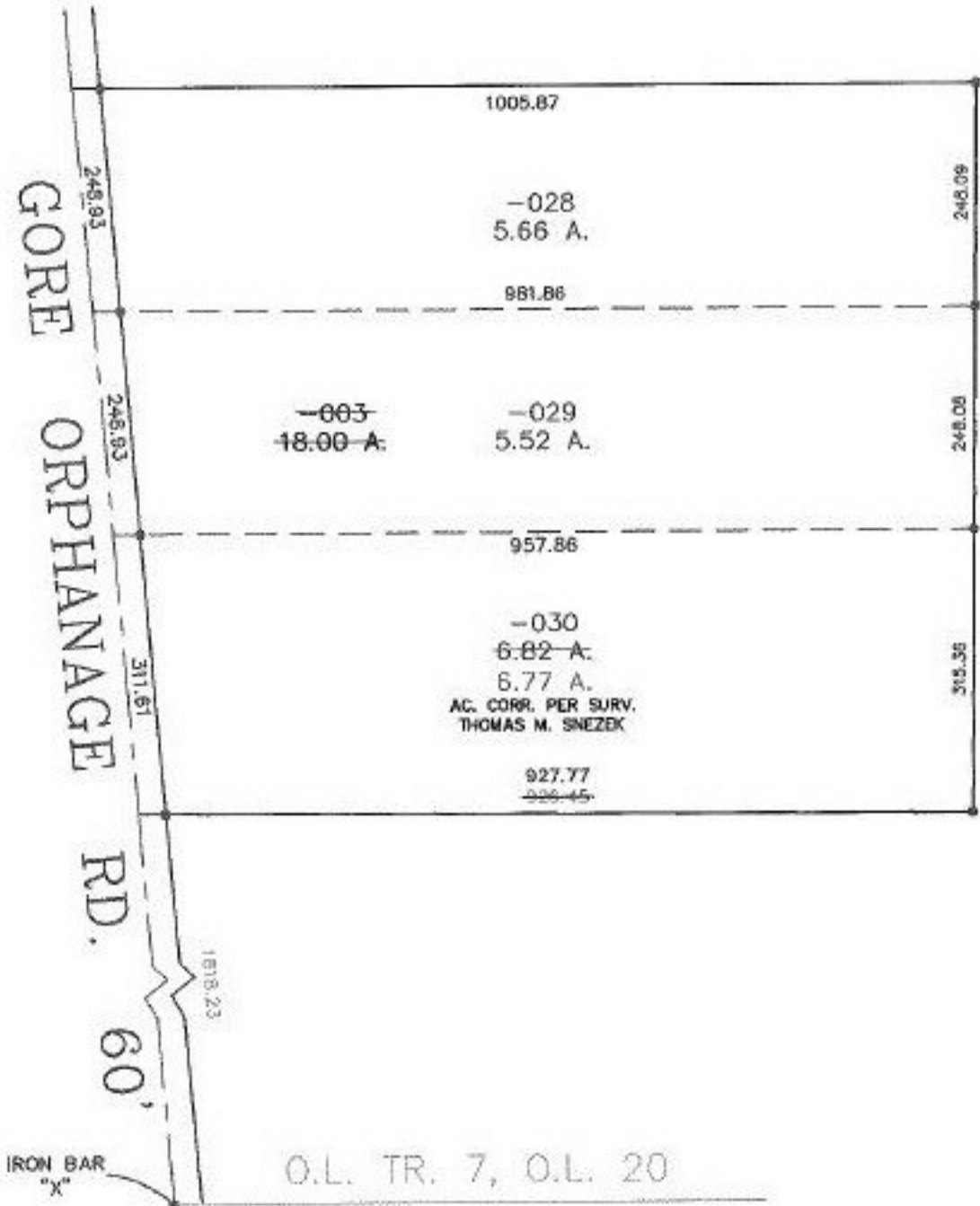


PARENT PARCEL: 17-07-020-000-003

CHILD PARCEL: 17-07-020-000-028 THRU -030

STARTING POINT: IRON BAR MARKED WITH AN "X", IN THE CL OF GORE ORPHANAGE RD. & IT'S INTERSECTION WITH SOUTH LINE OF TR. 7, O.L. 20

NO. 00020



**SPLITS/DEEDS PROCESSED**  
 LORAIN COUNTY TAX MAP DEPARTMENT  
 226 MIDDLE AVE. ELYRIA, OHIO

SURVEYED BY: THOMAS M. SNEZEK  
 CLOSURE: 0.05 : 10.000  
 MAP PAGE(S): 17-F  
 APPROVED BY: TJS DATE: 03/02/99  
 SCALE: 1" = 200' PRIOR INSTRUMENT: DV 753/27