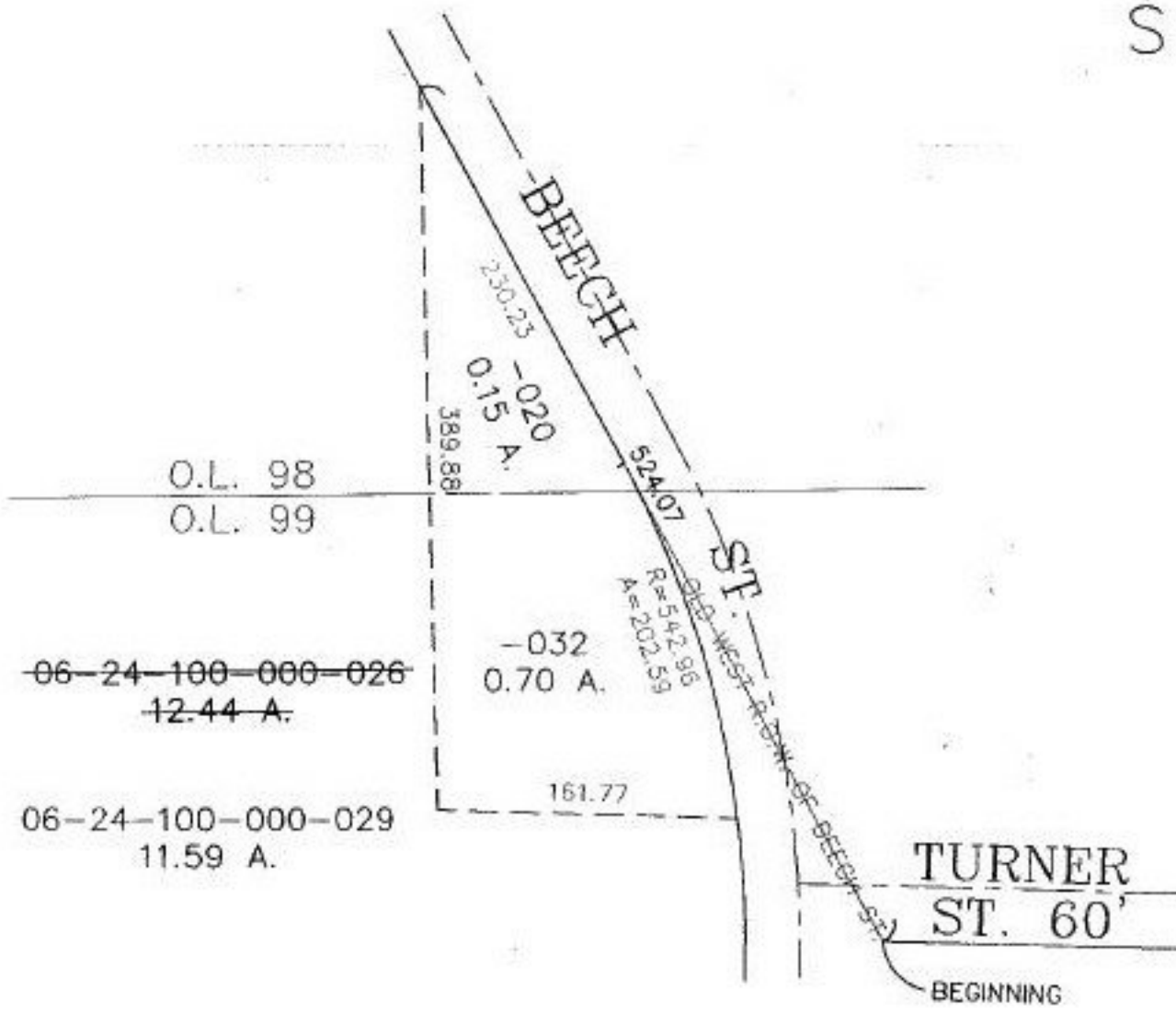


PARENT PARCEL: 06-24-100-000-026

CHILD PARCEL: 06-24-098-000-020, 06-24-099-000-032, & 06-24-100-000-029

STARTING POINT: INTERSECTION OF SOUTH LINE OF TURNER ST. & WEST LINE OF BEECH ST.

NO. 00018



O.L. 98
O.L. 99

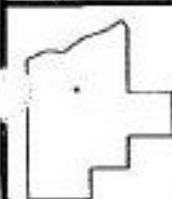
~~06-24-100-000-026~~
12.44 A.

06-24-100-000-029
11.59 A.

-032
0.70 A.
R=542.95
A=202.59

TURNER
ST. 60'

BEGINNING



SPLITS/DEEDS PROCESSED

LORAIN COUNTY TAX MAP DEPARTMENT
226 MIDDLE AVE. ELYRIA, OHIO

SURVEYED BY:	DAVID L. ELWELL
CLOSURE:	0.02 : 10,000
MAP PAGE(S):	6-117
APPROVED BY:	TJS DATE: 03/01/99
SCALE:	1" = 100' PRIOR INSTRUMENT: DV 1082/920