

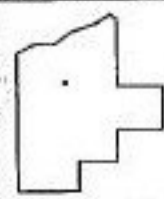
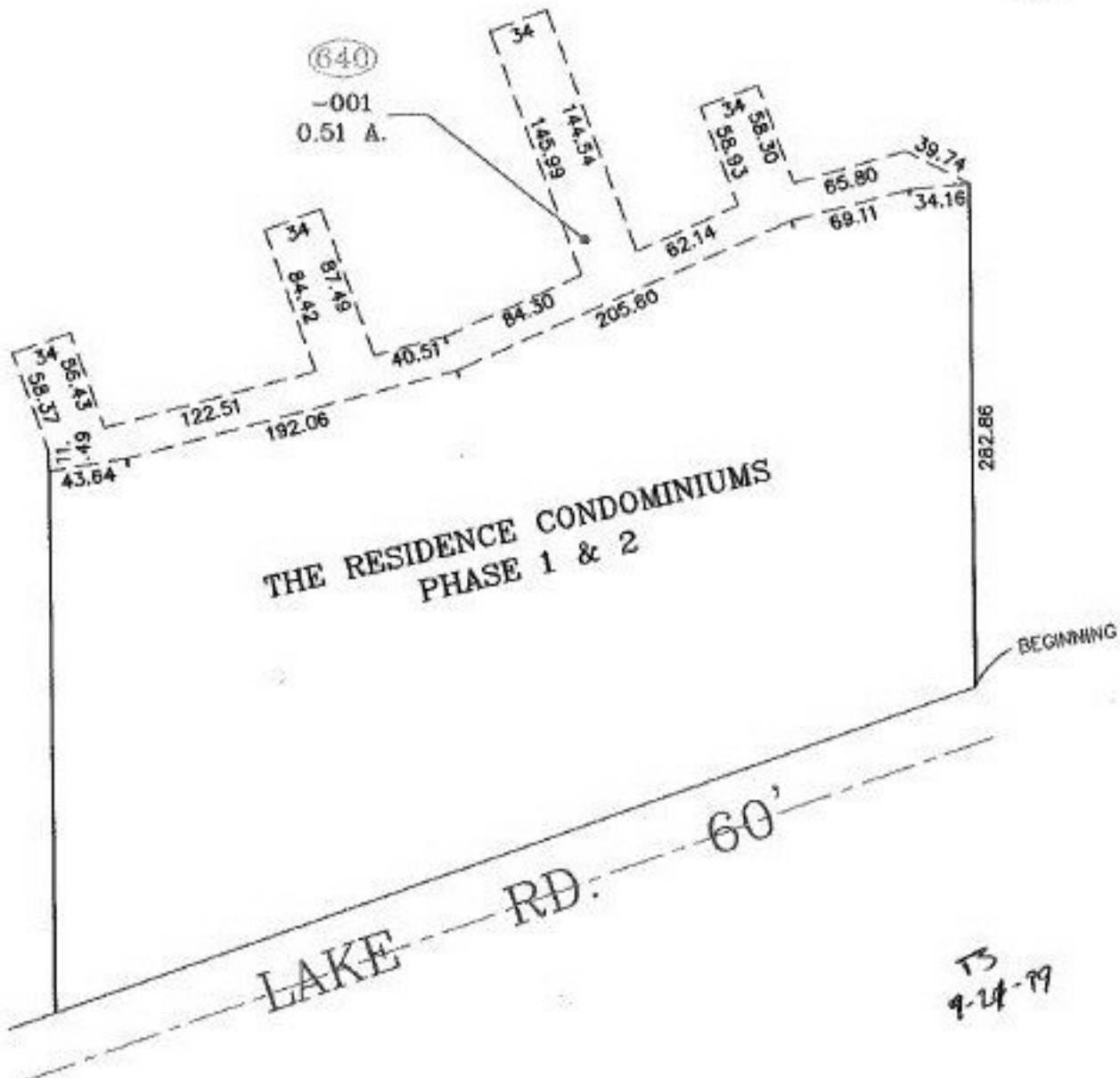
PARENT PARCEL: ADD TO DUPLICATE

CHILD PARCEL: 03-00-044-640-001

STARTING POINT: EAST LINE OF BLOCK 1 OF SUNSET COUNTRY CLUB ALLOT. NO. 2

NO. 00014

SUBMERGED LAND LEASE



SPLITS/DEEDS PROCESSED

LORAIN COUNTY TAX MAP DEPARTMENT
 226 MIDDLE AVE. ELYRIA, OHIO

SURVEYED BY: M. G. HURA

CLOSURE: 6.73 : 10.000

MAP PAGE(S): 03-00-044

APPROVED BY: TJS DATE: 03/15/99

SCALE: 1" = 100' PRIOR INSTRUMENT: NONE