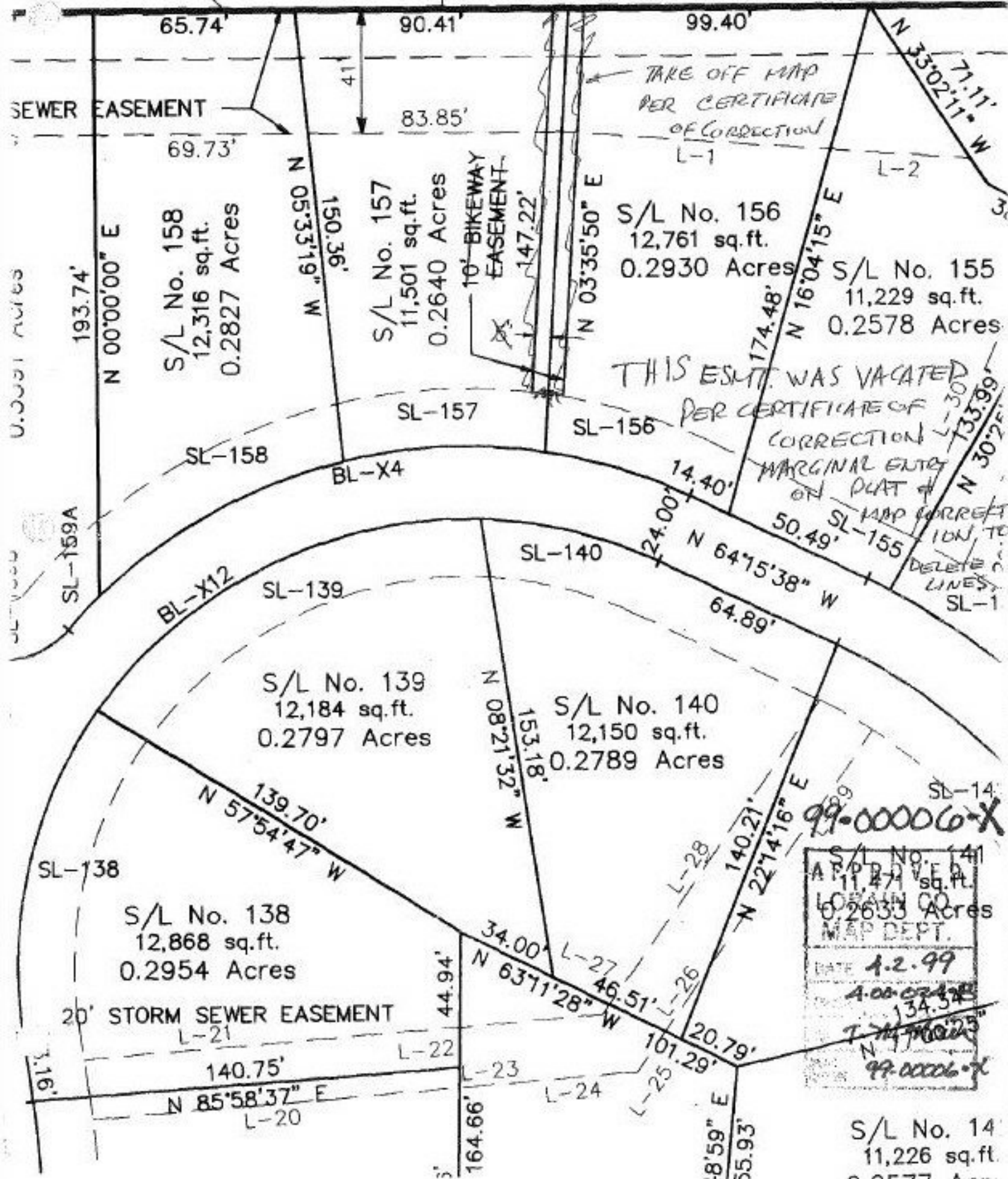


PART RESERVE AT SUMMER HILL SUB. No. 3
 S/L NO. 22 PV. 62, Pg. 3

1496.32



SEWER EASEMENT

S/L No. 158
 12,316 sq.ft.
 0.2827 Acres

S/L No. 157
 11,501 sq.ft.
 0.2640 Acres

S/L No. 156
 12,761 sq.ft.
 0.2930 Acres

S/L No. 155
 11,229 sq.ft.
 0.2578 Acres

S/L No. 139
 12,184 sq.ft.
 0.2797 Acres

S/L No. 140
 12,150 sq.ft.
 0.2789 Acres

S/L No. 138
 12,868 sq.ft.
 0.2954 Acres

99-00006-X

S/L No. 141
APPROVED
11,471 sq.ft.
LOHAIN CO
0.2633 Acres
MAP DEPT.
DATE 1.2.99
4-00-02-28
134.54
T. M. M. 25
99-00006-X

S/L No. 14
 11,226 sq.ft.
 0.2577 Acres

THIS ESM. WAS VACATED
 PER CERTIFICATE OF
 CORRECTION
 MARGINAL ENTRY
 ON PLAT #
 SL-155
 SL-155
 50.49'
 135.99'
 N 30°24'11" W

10' BIKEWAY
 EASEMENT
 147.22'

TAKE OFF MAP
 PER CERTIFICATE
 OF CORRECTION
 L-1

20' STORM SEWER EASEMENT
 L-21

U. S. DEPT. OF AGRICULTURE