

PARENT PARCEL: 09-00-086-105-037

CHILD PARCEL: XXXXXXXXXXXX

STARTING POINT: BEGINNING IN THE NORTH LINE OF E. COLLEGE ST. & THE WEST LINE OF N. PARK ST.

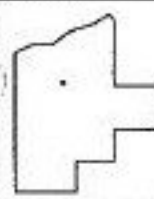
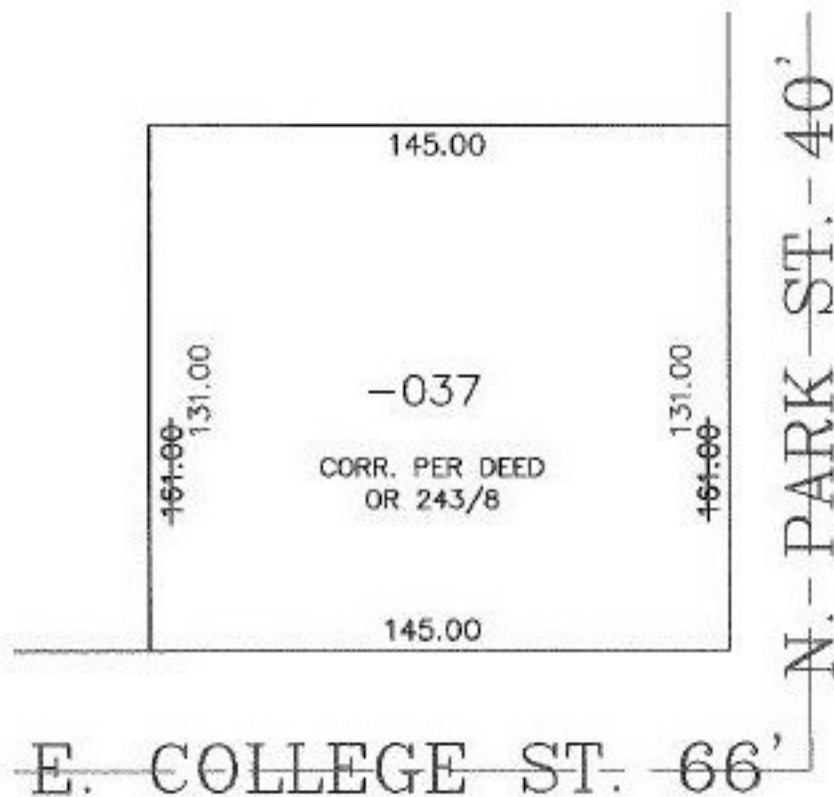
NO. 00003-D

DEPTH CORRECTION

09-00-086-105-037

~~145 X 161~~

145 X 131



SPLITS/DEEDS PROCESSED
 LORAIN COUNTY TAX MAP DEPARTMENT
 226 MIDDLE AVE. ELYRIA, OHIO

SURVEYED BY: NONE
 CLOSURE: CAN'T RUN
 MAP PAGE(S): 09-00-086-A
 APPROVED BY: TJS DATE: 01/25/99
 SCALE: 1" = 50' PRIOR INSTRUMENT: DV 962/361