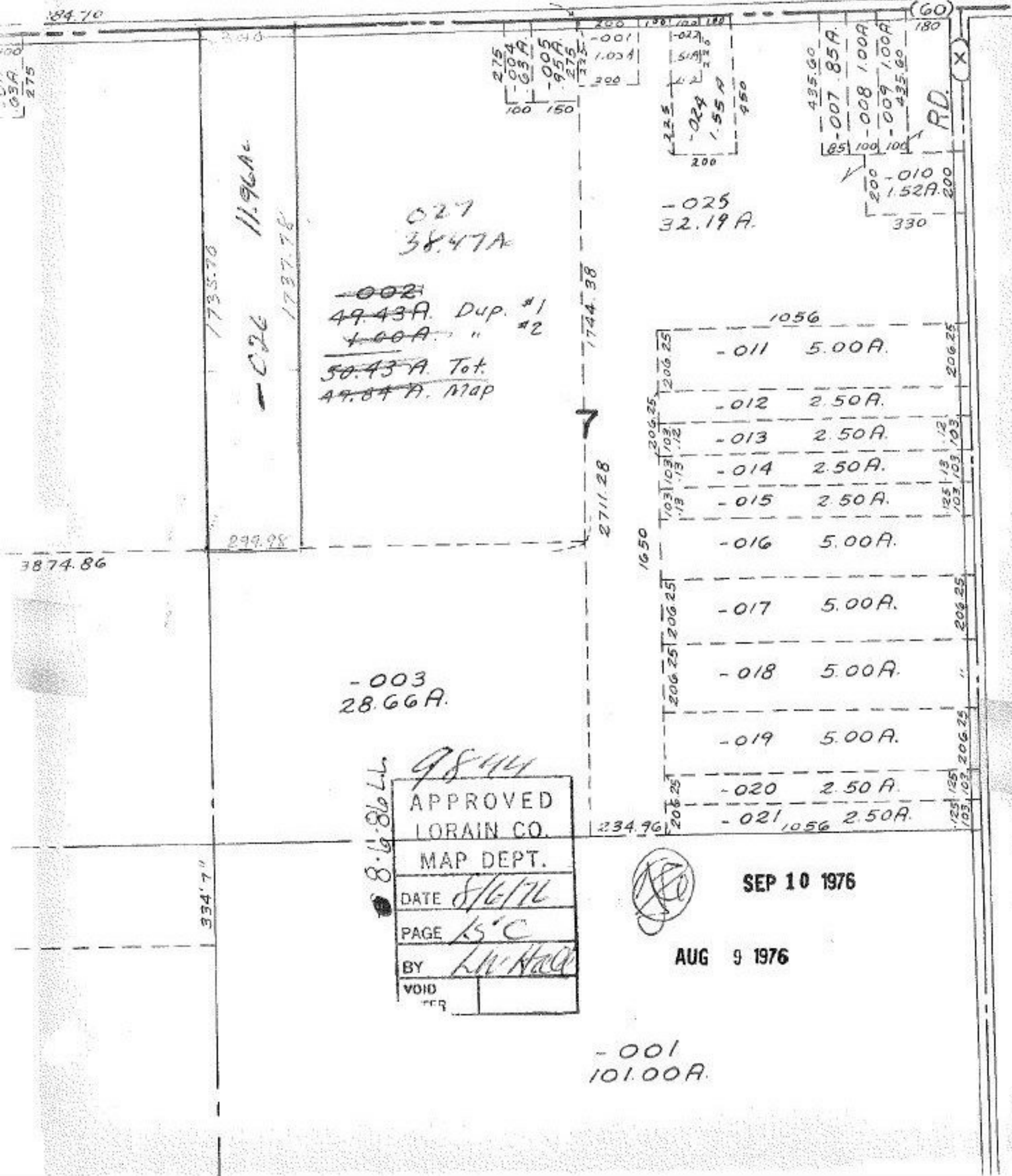


9844

RD.



027
38.47A

~~-002~~
49.43A. Dup. #1
49.84A. " #2
50.43A. Tot.
49.84A. Map

-025
32.19A

-003
28.66A

-011 5.00A

-012 2.50A

-013 2.50A

-014 2.50A

-015 2.50A

-016 5.00A

-017 5.00A

-018 5.00A

-019 5.00A

-020 2.50A

-021 1056 2.50A

-001
101.00A

8-6-86 L.L.

9844

APPROVED
LORAIN CO.
MAP DEPT.

DATE 8/6/76

PAGE 15 C

BY L.M. Hall

VOID



SEP 10 1976

AUG 9 1976