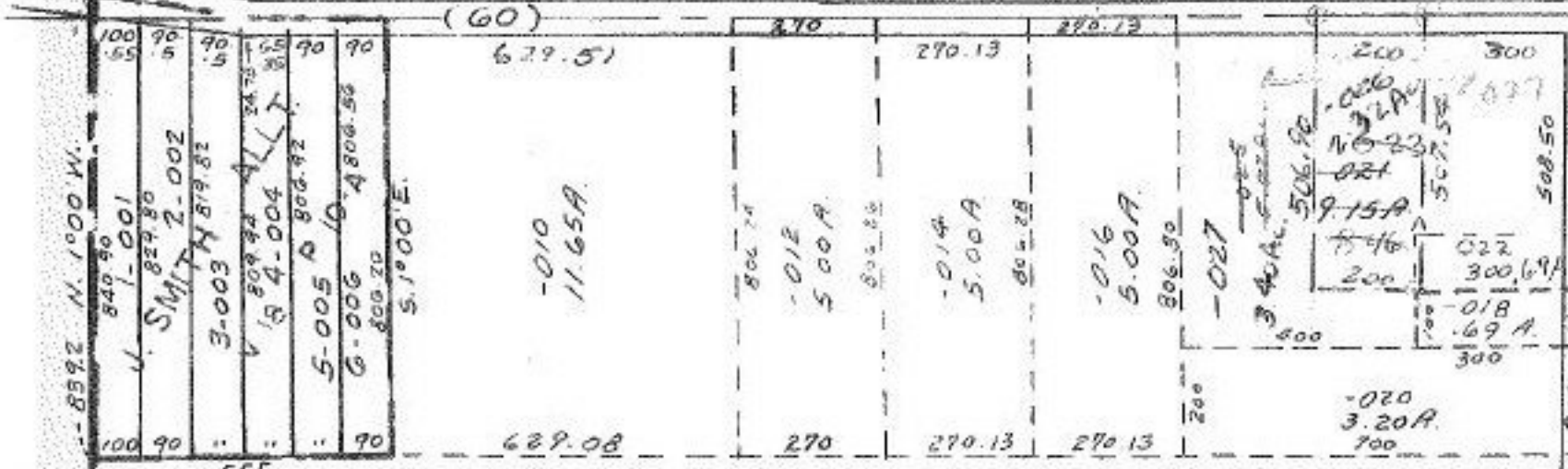


85.81A

9832

5.72  
2.32  
3.40

# RUSSIA



# 9832

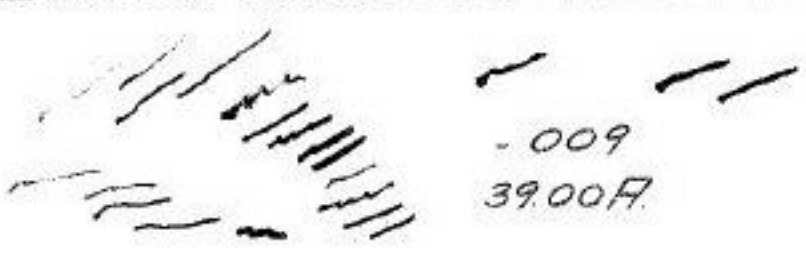
APPROVED. LORAIN CO. MAP DEPT.
DATE 7-30-76
PAGE 9-A
BY <i>[Signature]</i>
VOID AFTER

*P. P. 8/11/76*  
**21**

AUG 2 1976

- 008  
75.00 A. Dup  
73.24 A. Map.

*[Signature]*  
OCT 28 1976



- 009  
39.00 A.



- 002  
74.35 A.

OCT 28 1976

- 003 75 A.
- 004 70 A.
164.03
163.50
198
163.50

850

1234.2

1275.5

90°53'30"

1493.0

100

100

100

100

100

100

100

100

100

100

100

100

100

100

100

100

100

100

100

100

100

100

100

100

100

100

100

100

100

100