

-021  
37.81 A.



9831

-001  
48.99 A.

2504.84

32

-002

61.00 Total

489.72

Tax Map Correction  
Relocate PPT#005

-003  
9.77 A.

891.6

-009  
36.22 A.

9831

APPROVED  
LORAIN CO.  
MAP DEPT.

DATE 7/29/76

PAGE 11 C

BY L.H. Hill 005

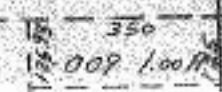
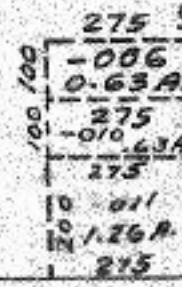
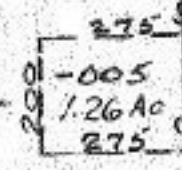
VOID AFTER 21.98 A.

AUG 4 1976

OCT 15 1976

1293.52

-004  
8.02 A.  
1296.50



902

799.92

908.98

651.75

2507.57

Per Survey Fees + Asson.

361.10

438.67

Mon.

722

722

752.50

270

270