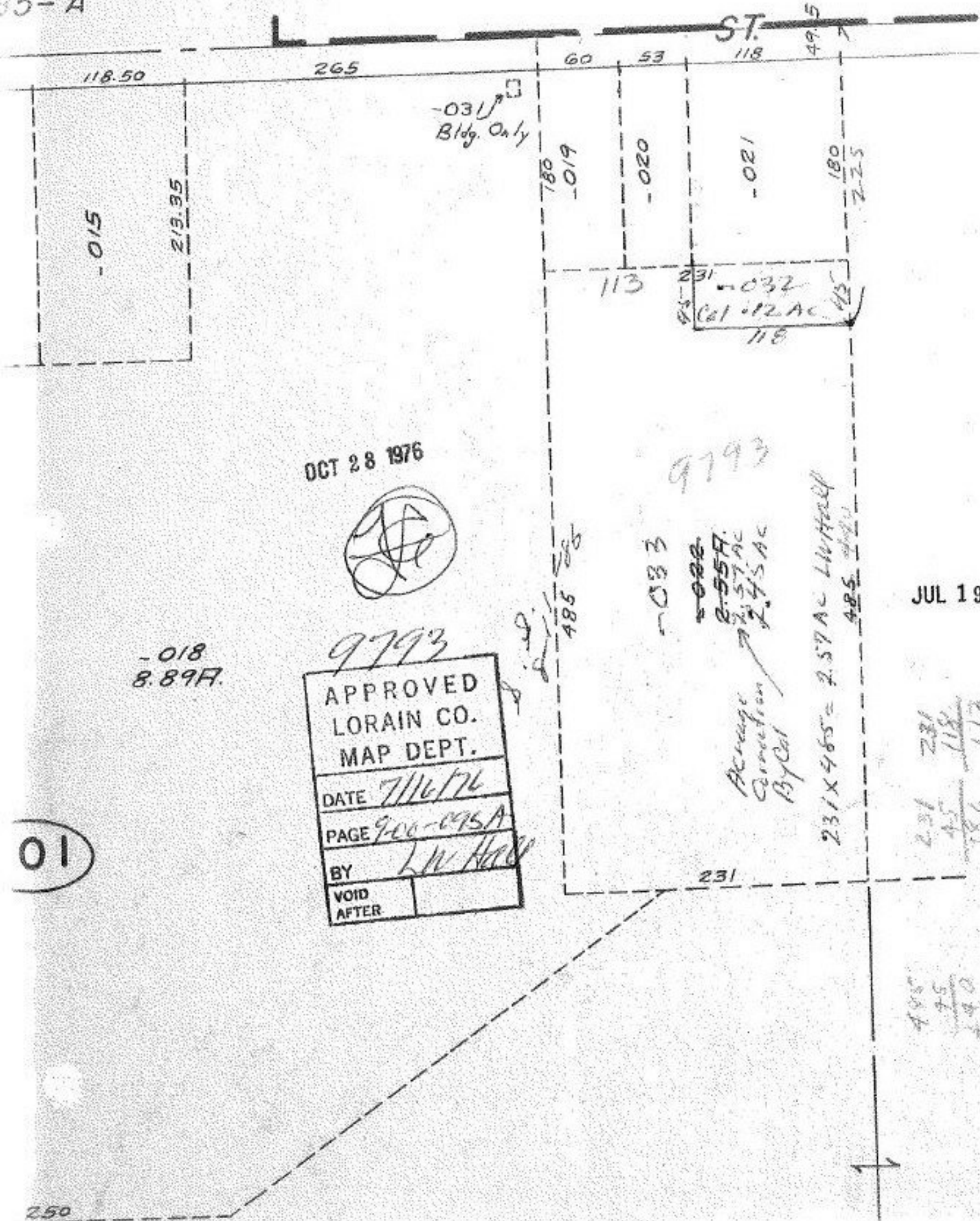


9793

5-A



OCT 28 1976



-018
8.89A.

9793

APPROVED	
LORAIN CO.	
MAP DEPT.	
DATE	7/16/76
PAGE	9-00-095A
BY	LW Hall
VOID AFTER	

-033

~~022~~
2.55A.
2.57A.
2.45A.

Average
Correction
By Cal

231 X 465 = 2.57A - Lottard

485

JUL 19 1976

231	231
45	118
186	113

485
45
140

01

250