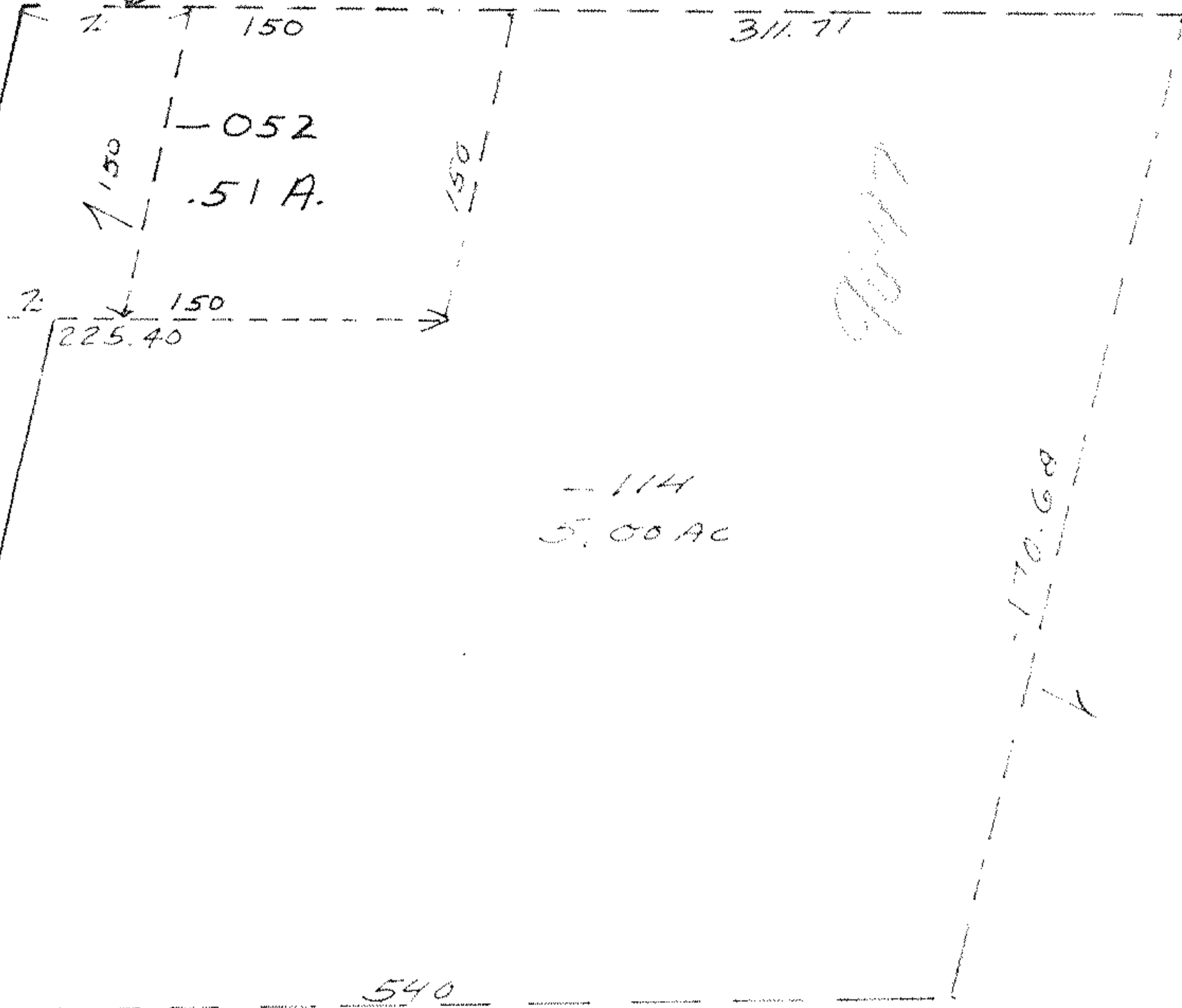
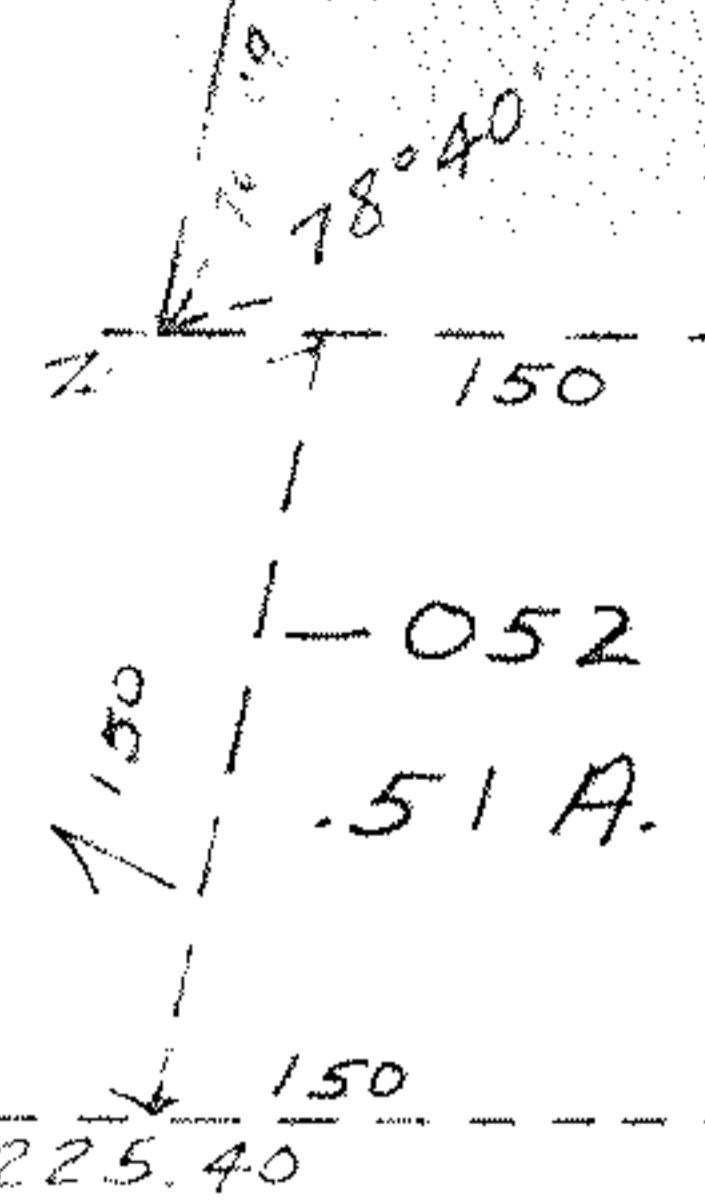


9697

OBERLTA  
622.32 334.16  
ELYRIA

See 9528 Also  
9509



-110 2.93A

OCT 19 1976

Pt 118 -120  
Pt 12.15 AC  
10.56

9.8.8-86

APPROVED	
FORAIN CO.	
MAP DEPT.	
DATE 6-22-76	
PAGE 10-00-012-B	
BY [Signature]	
VOID AFTER	

Pt 115  
Pt 12.90 AC

Pt 118 -120  
Pt 12.35 AC  
10.56

JUN 30 1976

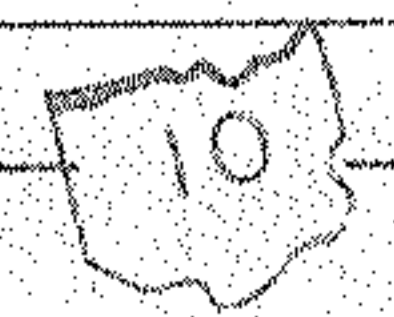
-116  
.96 AC

-119  
1.59 AC

-117  
.79 AC

Pt 118 120  
Pt 12.15 AC  
10.56 AC

1450  
500  
CLEVELAND - OBERL N



200  
25 50  
100  
225  
OFF 10-00-012-F