

2400  
Peck Roads North

RD 15

9663

010 8.51A  
134.10

-027  
12.96 A

-029  
5.27 A

-031  
5.16 A

-035  
5.16 R

5.17 A -023

5.16 R -025

-019  
17.80 A

-017  
15.60 A

-021  
20.06 A

-005  
6.00 A

-033  
10.79 A

-034  
3.00 R

-037 6.21 A

038

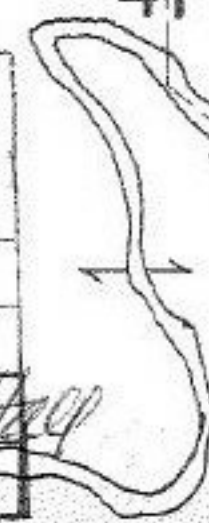
~~036~~

~~97.75 R~~

91.54 AC

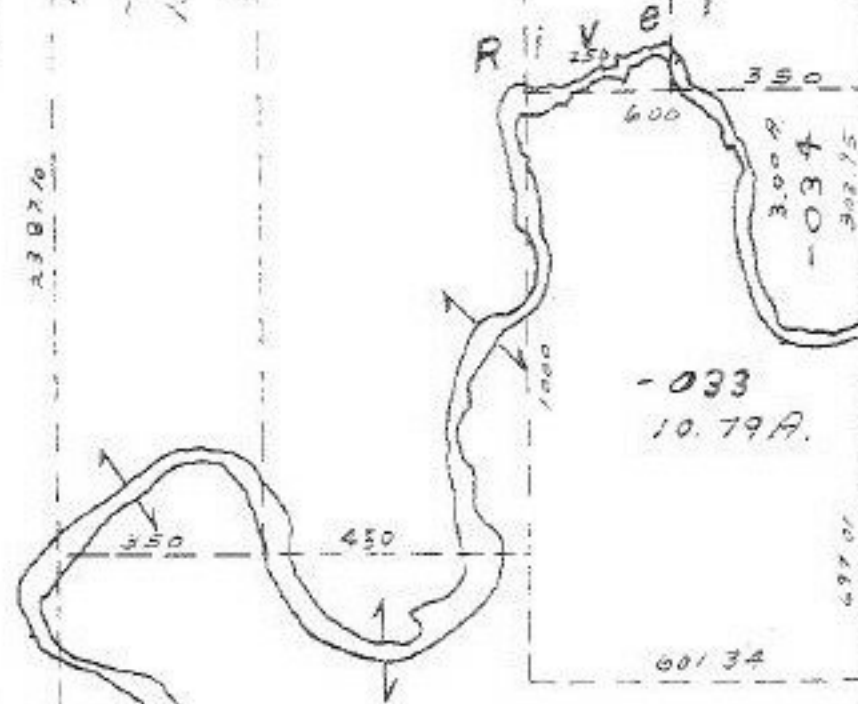
AUG 27 1976

APPROVED
LORAIN CO.
MAP DEPT.
DATE 6-8-76
PAGE 18 A
BY [Signature]
VOID AFTER



41

49.10



1196.75

697.01  
697.01  
907.99

601.34

796.75

796.75

796.75

796.75

796.75

796.75

796.75

796.75

796.75

796.75

796.75

796.75

796.75

796.75

796.75

796.75

796.75

796.75

796.75

796.75

796.75

796.75

796.75

796.75

796.75

796.75

796.75

796.75

796.75

796.75

796.75

796.75

796.75

796.75

796.75

796.75

796.75

796.75

796.75

796.75

796.75

796.75

796.75

796.75

796.75

796.75

796.75

796.75

796.75

796.75

796.75

796.75

796.75

796.75

796.75

796.75

796.75

796.75

796.75

796.75

796.75

796.75

796.75

796.75

796.75

796.75

796.75

796.75

796.75

796.75

796.75

796.75

796.75

796.75

796.75

796.75

796.75

796.75

796.75

796.75

796.75

796.75

796.75

796.75

796.75

796.75

796.75

796.75

796.75

796.75

796.75

796.75

796.75

796.75

796.75

796.75

796.75

796.75

796.75

796.75

796.75

796.75

796.75

796.75

796.75

796.75

796.75

796.75

796.75

796.75

796.75

796.75

796.75

796.75

796.75

796.75

796.75

796.75

796.75

796.75

796.75

796.75

796.75

796.75

796.75

796.75

796.75

796.75

796.75

796.75

796.75

796.75

796.75

796.75

796.75

796.75

796.75

796.75

796.75

796.75

796.75

796.75

796.75

796.75

796.75

796.75

796.75

796.75

796.75

796.75

796.75

796.75

796.75

796.75

796.75

796.75

796.75

796.75

796.75

796.75

796.75

796.75

796.75

796.75

796.75

796.75

796.75

796.75

796.75

796.75

796.75

796.75

796.75

796.75

796.75

796.75

796.75

796.75

796.75

796.75

796.75

796.75

796.75

796.75

796.75

796.75

796.75

796.75

796.75

796.75

796.75

796.75

796.75

796.75

796.75

796.75

796.75

796.75

796.75

796.75

796.75

796.75

796.75

796.75

796.75

796.75

796.75

796.75

796.75

796.75

796.75

796.75

796.75

796.75

796.75

796.75

796.75

796.75

796.75

796.75

796.75

796.75

796.75

796.75

796.75

796.75

796.75

796.75

796.75

796.75

796.75

796.75

796.75

796.75

796.75

796.75

796.75

796.75

796.75

796.75

796.75

796.75

796.75

796.75

796.75

796.75

796.75

796.75

796.75

796.75

796.75

796.75

796.75

796.75

796.75

796.75

796.75

796.75

796.75

796.75

796.75