

14-H

RD.

(60)

-002
18.00 A.

-001
26.00 A.

R.

R.

RD.

(60)

-008
82.00 A.

JUN 18 1976

103.50
1.57
101.93

6

-010
-009
103.50 A.

S. 28.8 A. 101.93 A.

1640.25

-007
18.00 A.

2559.88
208.50
268.38

1640.14

9657

APPROVED
LORAIN CO.
MAP DEPT.

AUG 27 1976

DATE 6-4-76

PAGE 18-D

BY *K. Colwell*

VOID
AFTER

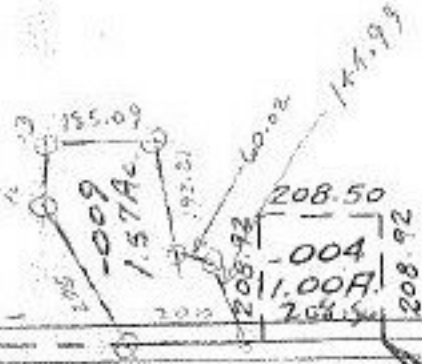
-006
43.50 A.



1135.2

RD.

(60)



3300

2559.88

-002
5.75 A.