

SEE 14-F

JUN 4 1976

To E Port Wadsworth Rd.
2881.90 - RD

-020
~~014~~
~~72.50 A~~
67.10 AC.

1091.60
-019 5.00 AC.
-015 1.50 AC.
491.60

-018
63.54 A.

AUG 27 1976
Branch

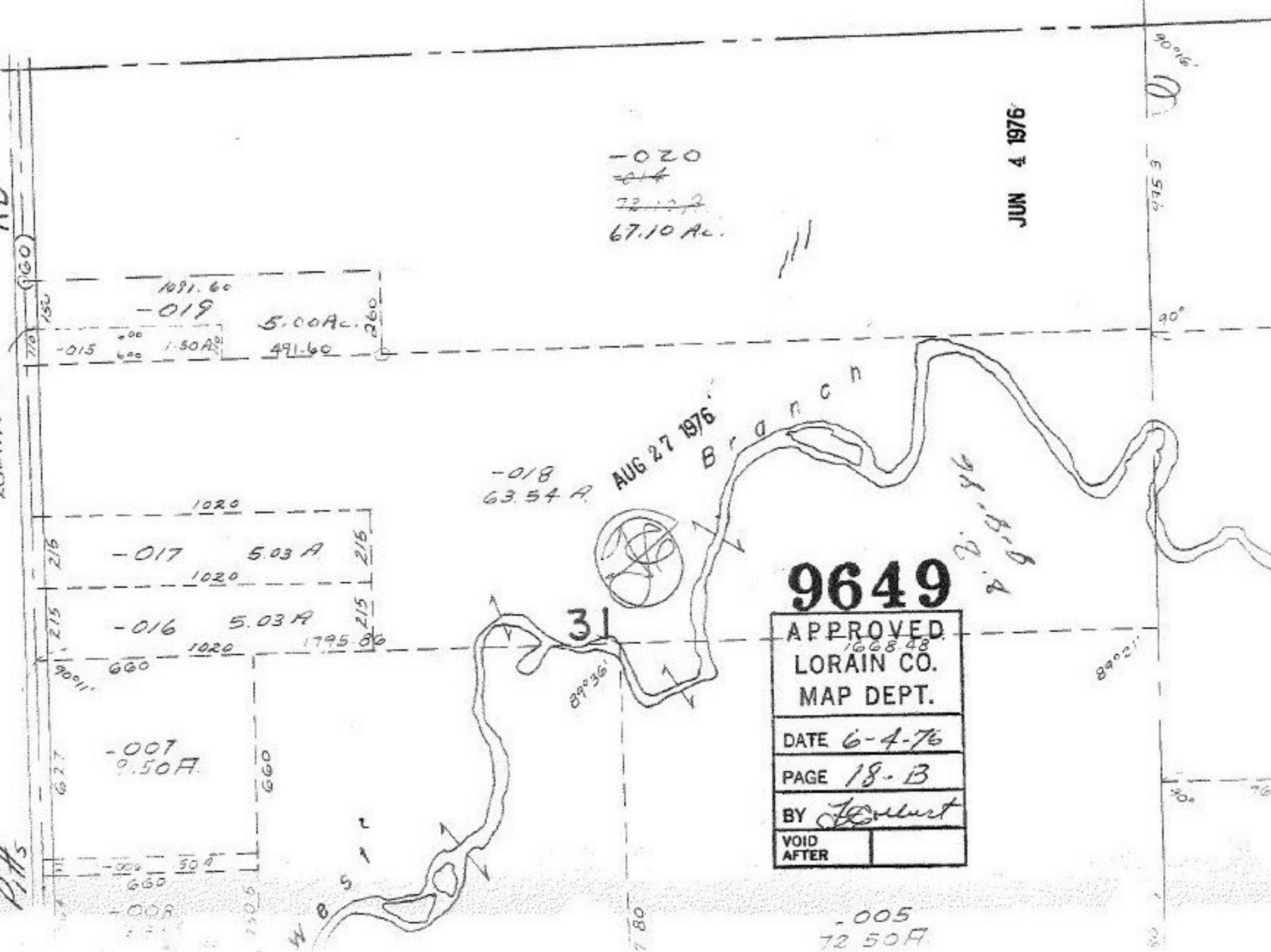
1020
-017 5.03 A
1020
-016 5.03 A
1020 1795.86

-007
9.50 A.

9649

APPROVED
LORAIN CO.
MAP DEPT.
DATE 6-4-76
PAGE 18-B
BY J. [Signature]
VOID AFTER

-005
72.50 A.



P.H.s

W B S - r

P. H. B.
P. H. B.

90°16'

555.9

90°

89°02'

90°

90°

80