

pt. -004
pt 103.78A

JUN 4 1976

9647

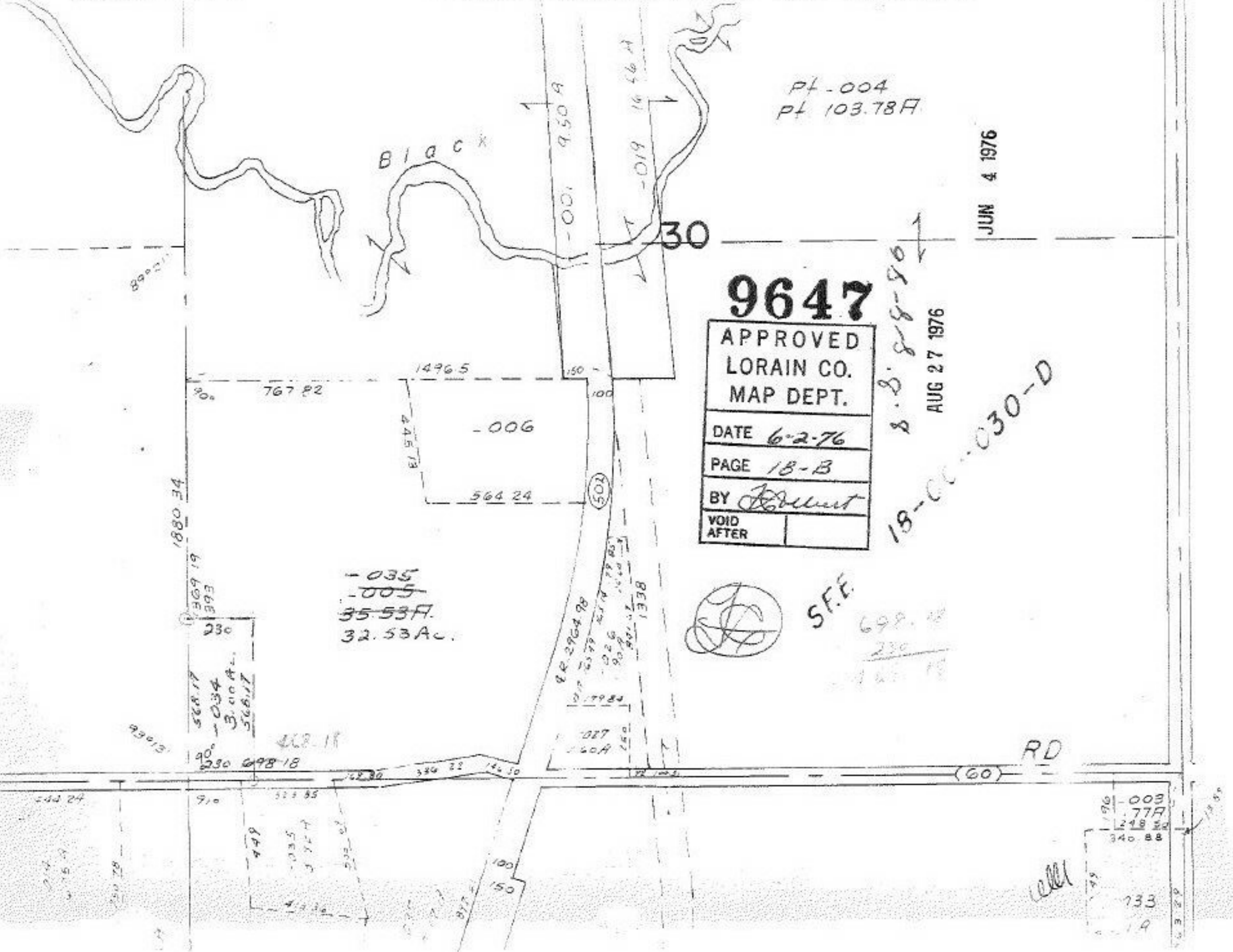
APPROVED LORAIN CO. MAP DEPT.
DATE 6-2-76
PAGE 18-B
BY <i>[Signature]</i>
VOID AFTER

8-2-88-80
AUG 27 1976

18-CO-030-D



S.F.E.
698.18
230
1248.88



890011

Black

30

-006

502

-035
-005
35.53A.
32.53 AC.

RD

(60)

190 -003
248.88
340.88

well

733
19