

#9636  
H-00-0126  
A 150

PT. ~~098~~  
PT. ~~35-82A~~

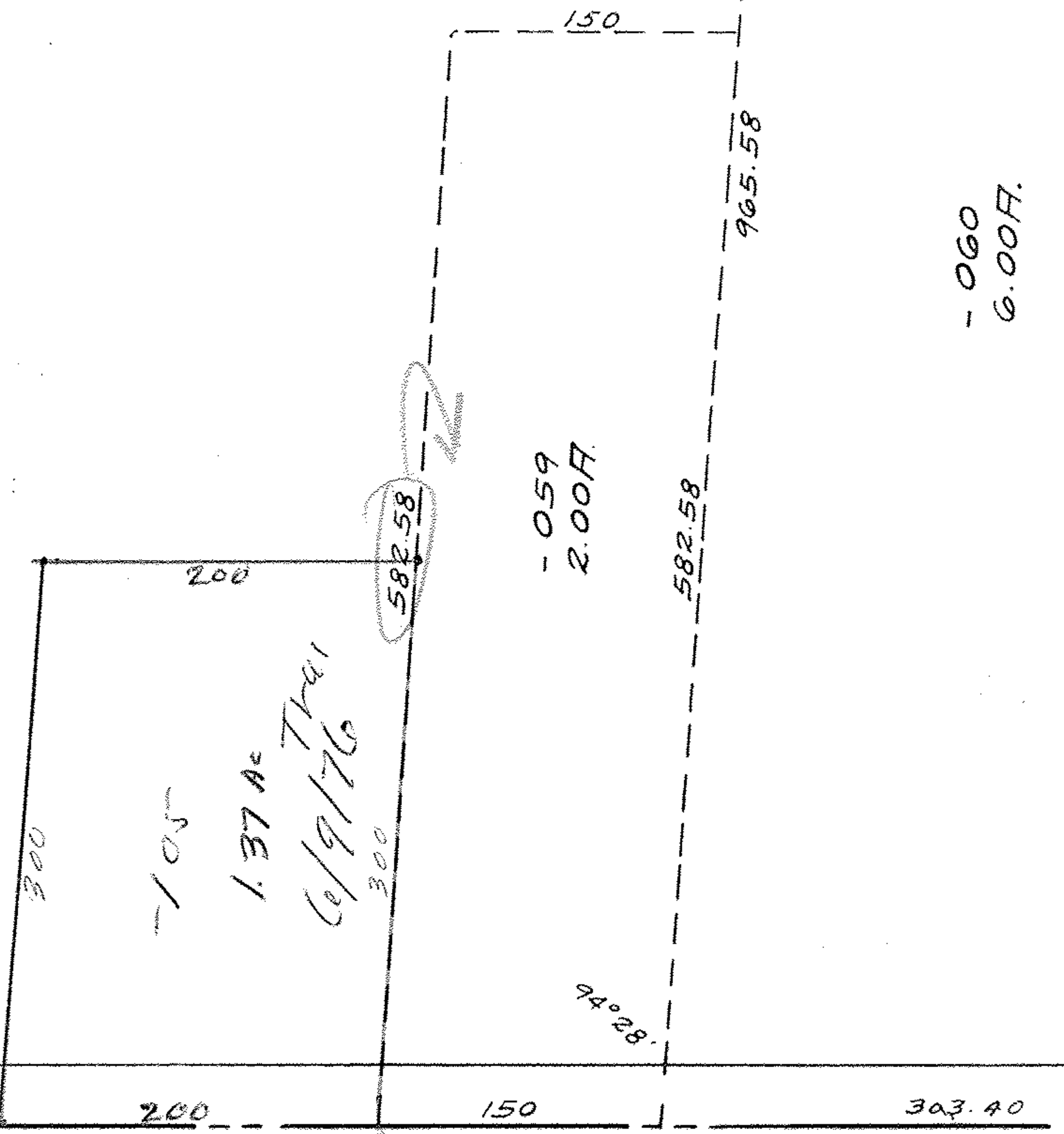
-106  
32.45 Ac

9636

APPROVED LORAIN CO. MAP DEPT.
DATE 6-7-76
PAGE 4-00-0126 AH
BY L. A. Hall
VOID AFTER

8-16-86 L.L.

APR 15 1977  
JUN 9 1976



# AVON VILLAGE

SCALE: 1" = 100'

E 1/2 SE