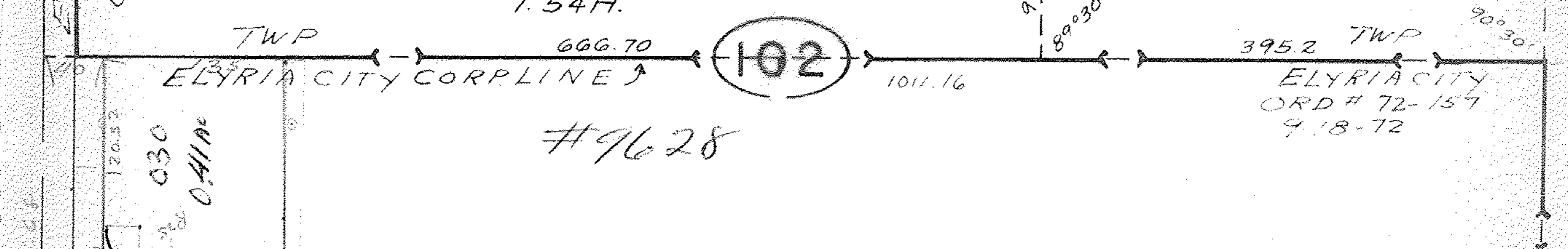
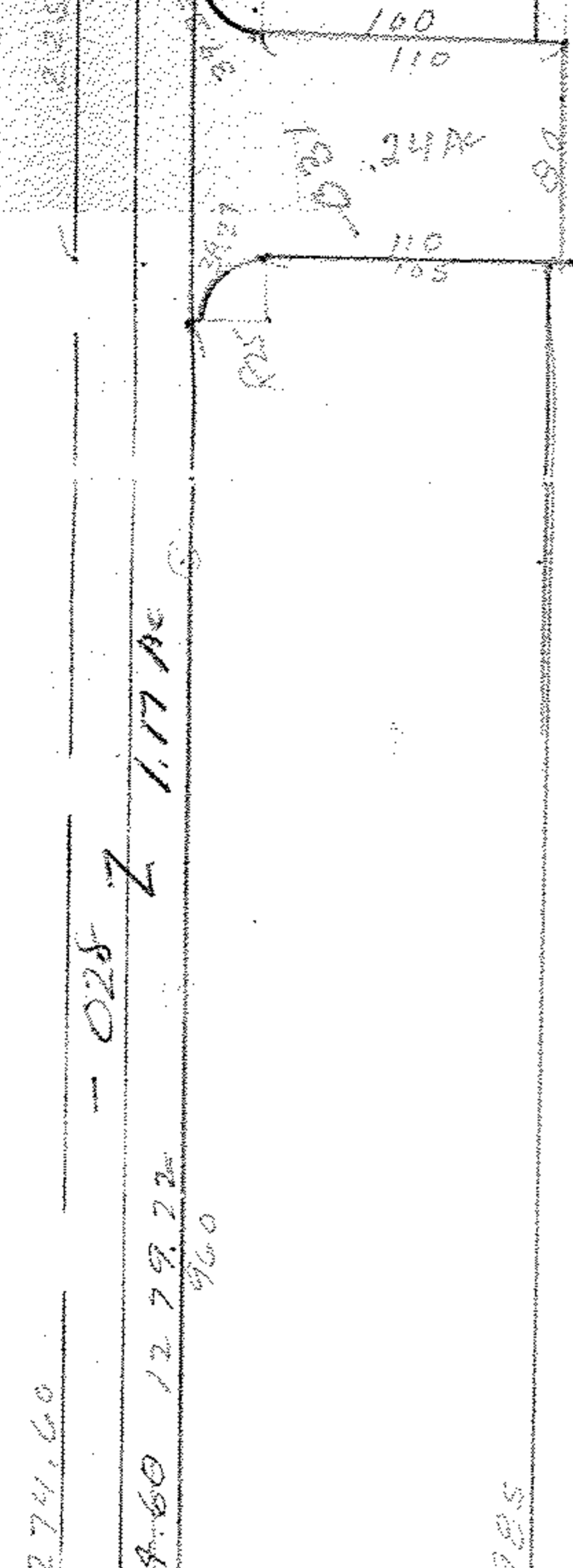


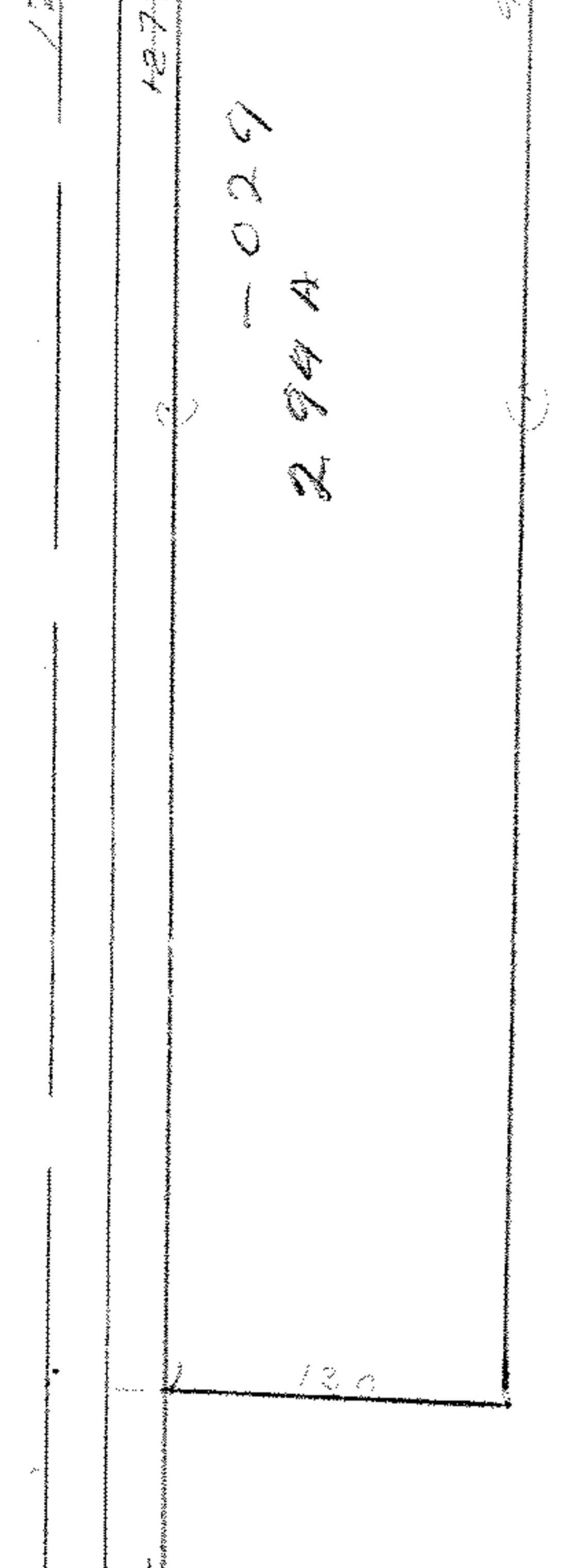
1.54 A.



#9628



~~023~~ 032
 31.03 A. 26.27 AC



P. P. H. S. B.

#9628

APPROVED	
LORAIN CO.	
MAP DEPT.	
DATE	5-24-76
PAGE	10-00-005 C
BY	L. W. H. C. P.
VOID AFTER	

OCT 19 1976

5-27-76

