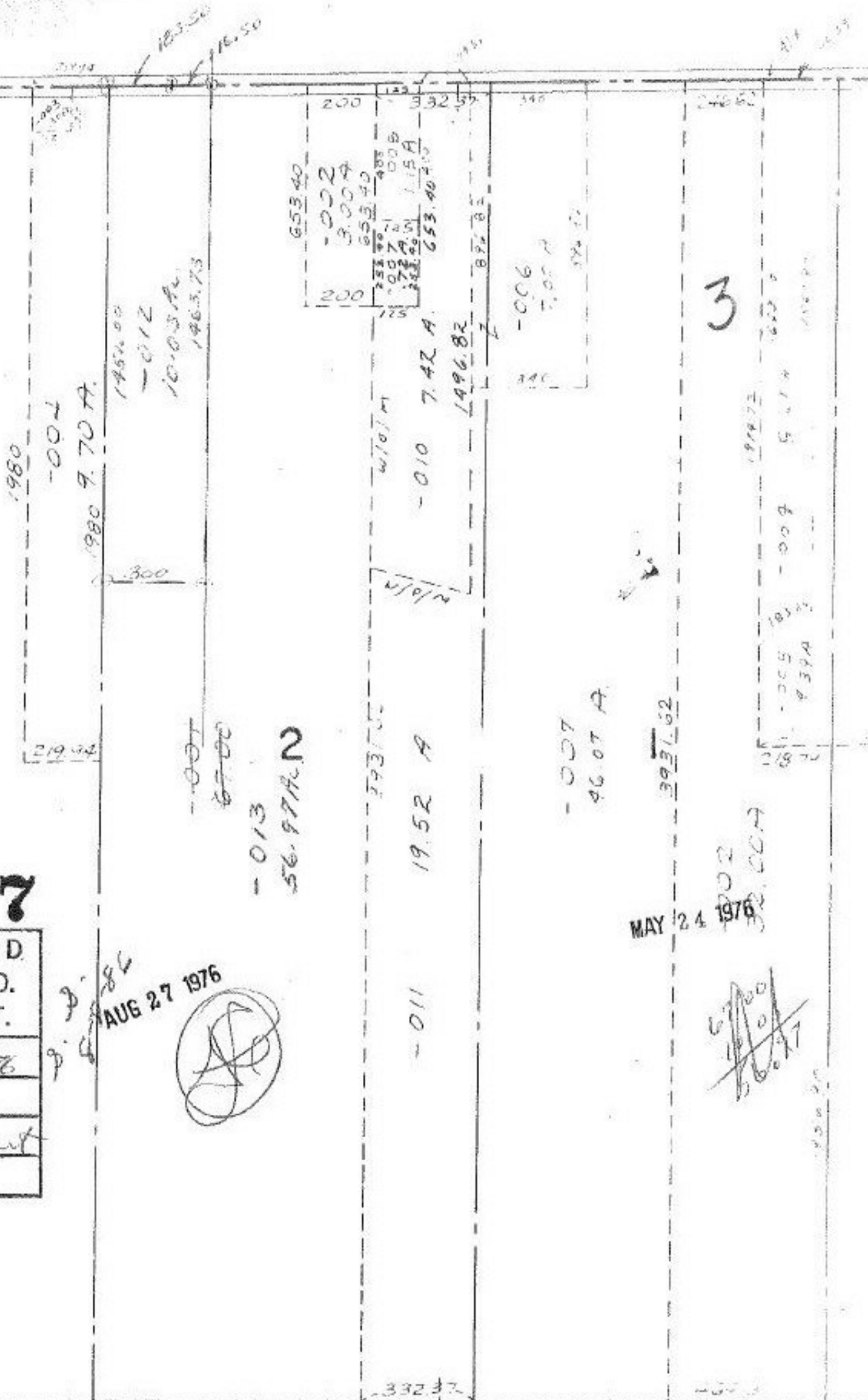


C T

-002  
90.00A

9617

APPROVED LORAIN CO. MAP DEPT.	
DATE 5-19-76	
PAGE 19-E	
BY <i>[Signature]</i>	
VOID AFTER	



1980  
-001  
1980 7.70 A.  
1954.00  
-012  
1010.3 A.  
1463.73

-007  
67.00  
-013  
56.97 A. N

200	653.40
200	-002
	3.00 A
	653.40
	258.90
	405
	700
	72.15 A
	115 A
	653.40

193.75  
N 101° 10' W  
-010 7.42 A.  
1496.82

-007  
46.07 A.

393.62  
MAY 24 1976

3  
1980 9.70 A.  
1954.00  
-009  
5.17 A  
1463.73

*[Signature]*  
5.17 A  
1463.73

251.60

332.37