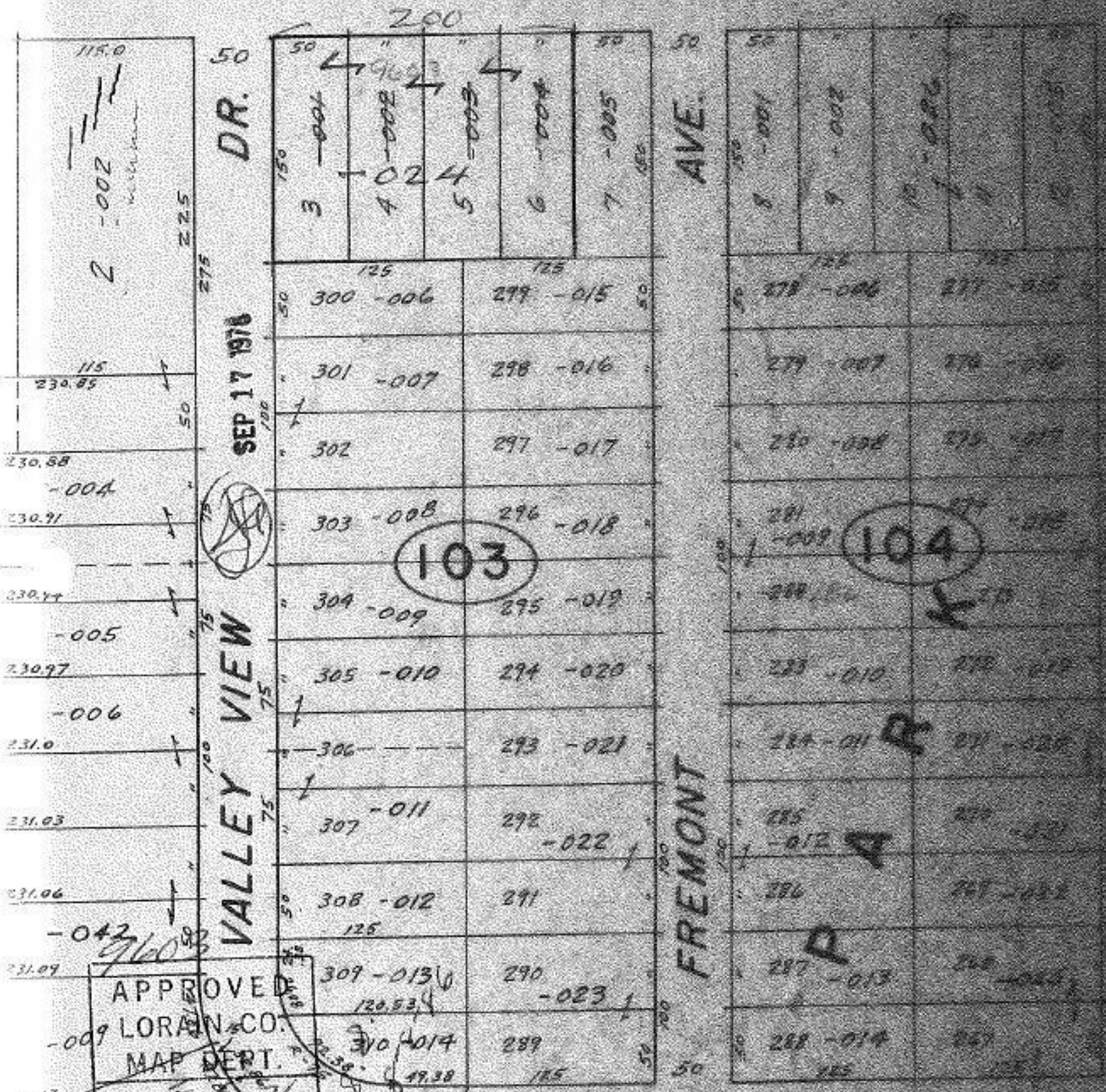


9603

CUYAHOGA CO.

RD



DR.

AVE.

SEP 17 1976

VALLEY VIEW

FREMONT

LAFAYETTE DR. MAY 20 1976

APPROVED
 LORAIN CO.
 MAP DEPT.
 DATE 5-18-76
 BY [Signature]
 VOID AFTER 043

VALLEY

115.0
 2 -002
 230.85
 230.88
 230.91
 230.94
 230.97
 231.0
 231.03
 231.06
 231.09
 231.12
 231.15
 231.18
 231.21
 231.24
 231.27
 231.30
 231.33
 231.36
 231.39
 231.42
 231.45
 231.48
 231.51
 231.54
 231.57
 231.60
 231.63
 231.66
 231.69
 231.72
 231.75
 231.78
 231.81
 231.84
 231.87
 231.90
 231.93
 231.96
 231.99
 232.02
 232.05
 232.08
 232.11
 232.14
 232.17
 232.20
 232.23
 232.26
 232.29
 232.32
 232.35
 232.38
 232.41
 232.44
 232.47
 232.50
 232.53
 232.56
 232.59
 232.62
 232.65
 232.68
 232.71
 232.74
 232.77
 232.80
 232.83
 232.86
 232.89
 232.92
 232.95
 232.98
 233.01
 233.04
 233.07
 233.10
 233.13
 233.16
 233.19
 233.22
 233.25
 233.28
 233.31
 233.34
 233.37
 233.40
 233.43
 233.46
 233.49
 233.52
 233.55
 233.58
 233.61
 233.64
 233.67
 233.70
 233.73
 233.76
 233.79
 233.82
 233.85
 233.88
 233.91
 233.94
 233.97
 234.00
 234.03
 234.06
 234.09
 234.12
 234.15
 234.18
 234.21
 234.24
 234.27
 234.30
 234.33
 234.36
 234.39
 234.42
 234.45
 234.48
 234.51
 234.54
 234.57
 234.60
 234.63
 234.66
 234.69
 234.72
 234.75
 234.78
 234.81
 234.84
 234.87
 234.90
 234.93
 234.96
 234.99
 235.02
 235.05
 235.08
 235.11
 235.14
 235.17
 235.20
 235.23
 235.26
 235.29
 235.32
 235.35
 235.38
 235.41
 235.44
 235.47
 235.50
 235.53
 235.56
 235.59
 235.62
 235.65
 235.68
 235.71
 235.74
 235.77
 235.80
 235.83
 235.86
 235.89
 235.92
 235.95
 235.98
 236.01
 236.04
 236.07
 236.10
 236.13
 236.16
 236.19
 236.22
 236.25
 236.28
 236.31
 236.34
 236.37
 236.40
 236.43
 236.46
 236.49
 236.52
 236.55
 236.58
 236.61
 236.64
 236.67
 236.70
 236.73
 236.76
 236.79
 236.82
 236.85
 236.88
 236.91
 236.94
 236.97
 237.00
 237.03
 237.06
 237.09
 237.12
 237.15
 237.18
 237.21
 237.24
 237.27
 237.30
 237.33
 237.36
 237.39
 237.42
 237.45
 237.48
 237.51
 237.54
 237.57
 237.60
 237.63
 237.66
 237.69
 237.72
 237.75
 237.78
 237.81
 237.84
 237.87
 237.90
 237.93
 237.96
 237.99
 238.02
 238.05
 238.08
 238.11
 238.14
 238.17
 238.20
 238.23
 238.26
 238.29
 238.32
 238.35
 238.38
 238.41
 238.44
 238.47
 238.50
 238.53
 238.56
 238.59
 238.62
 238.65
 238.68
 238.71
 238.74
 238.77
 238.80
 238.83
 238.86
 238.89
 238.92
 238.95
 238.98
 239.01
 239.04
 239.07
 239.10
 239.13
 239.16
 239.19
 239.22
 239.25
 239.28
 239.31
 239.34
 239.37
 239.40
 239.43
 239.46
 239.49
 239.52
 239.55
 239.58
 239.61
 239.64
 239.67
 239.70
 239.73
 239.76
 239.79
 239.82
 239.85
 239.88
 239.91
 239.94
 239.97
 240.00

37